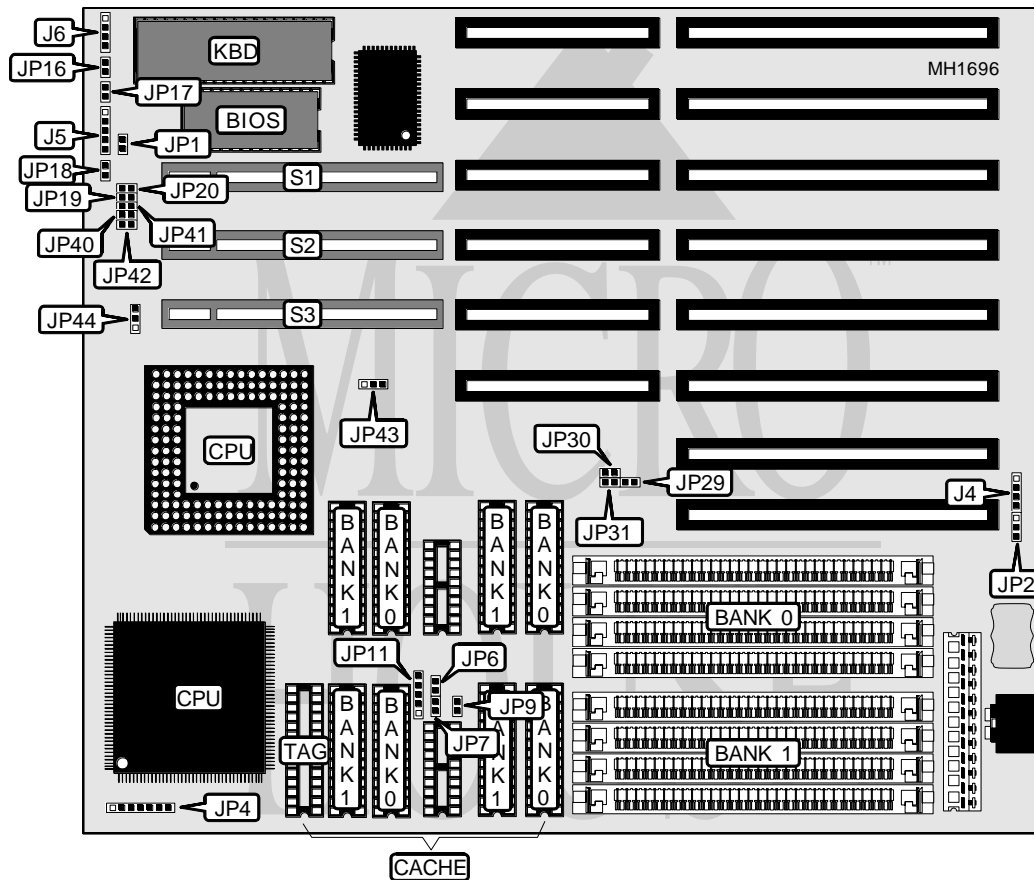


AIM MOTHERBOARD COMPANY

486 VESA

Processor	80486SX/80487SX/80486DX/80486DX2
Processor Speed	20/25/33/50(internal)/50/66(internal)MHz
Chip Set	UNI
Max. Onboard DRAM	128MB
Cache	32/64/128/256KB
BIOS	AMI
Dimensions	254mm x 218mm
I/O Options	32-bit VESA local bus slots (3)
NPU Options	None



CONNECTIONS			
Purpose	Location	Purpose	Location
External battery	J4	Turbo switch	JP17
Power LED & keylock	J5	32-bit VESA Local bus slots	S1
Speaker	J6	32-bit VESA Local bus slots	S2
Reset switch	JP18	32-bit VESA Local bus slots	S3
Turbo LED	JP16		

Continued on next page . . .

AIM MOTHERBOARD COMPANY

486 VESA

... continued from previous page

USER CONFIGURABLE SETTINGS		
Function	Jumper	Position
í Monitor type select color	JP1	Closed
Monitor type select monochrome	JP1	Open
í CMOS memory normal operation	JP2	pins 1 & 2 closed
CMOS memory clear	JP2	pins 2 & 3 closed
í Factory configured - do not alter	JP20	Closed
í V-L bus clock select - normal	JP43	pins 2 & 3 closed
V-L bus clock select - adjusted	JP43	pins 1 & 2 closed

DRAM CONFIGURATION		
Size	Bank 0	Bank 1
1MB	(4) 256K x 9	NONE
2MB	(4) 256K x 9	(4) 256K x 9
4MB	(4) 1M x 9	NONE
5MB	(4) 1M x 9	(4) 256K x 9
8MB	(4) 1M x 9	(4) 1M x 9
16MB	(4) 4M x 9	NONE
17MB	(4) 4M x 9	(4) 256K x 9
20MB	(4) 4M x 9	(4) 1M x 9
32MB	(4) 4M x 9	(4) 4M x 9
64MB	(4) 16M x 9	NONE
65MB	(4) 16M x 9	(4) 256K x 9
68MB	(4) 16M x 9	(4) 4M x 9
80MB	(4) 16M x 9	(4) 4M x 9
128MB	(4) 16M x 9	(4) 16M x 9

CPU TYPE CONFIGURATION			
Type	JP4	JP19	JP44
80486SX	pins 5 & 6 closed	Open	pins 2 & 3 closed
80487SX	pins 2 & 3, 4 & 5, 6 & 7 closed	Open	pins 2 & 3 closed
80486DX/33	pins 1 & 2, 4 & 5, 6 & 7 closed	Open	pins 2 & 3 closed
80486DX/50	pins 1 & 2, 4 & 5, 6 & 7 closed	Closed	pins 1 & 2 closed
80486DX2	pins 1 & 2, 4 & 5, 6 & 7 closed	Open	pins 2 & 3 closed

CPU SPEED CONFIGURATION			
Speed	JP29	JP30	JP31
20MHz	Open	Closed	Closed
25Mhz	Closed	Open	Closed
33MHz	Closed	Closed	Open
50i MHz	Open	Closed	Open
50MHz	Closed	Open	Closed
66i MHz	Closed	Closed	Open

Continued on next page ...

AIM MOTHERBOARD COMPANY

486 VESA

... continued from previous page

CACHE JUMPER CONFIGURATION				
Size	JP6	JP7	JP9	JP11
32KB	Open	Open	Open	pins 2 & 3 closed
64KB	Open	Closed	Open	pins 1 & 2 closed
128KB	Open	Closed	Closed	pins 1 & 2 and 3 & 4 closed
256KB	Closed	Closed	Closed	pins 1 & 2 and 4 & 5 closed

VESA CONFIGURATION			
Setting	JP40	JP41	JP42
V-L bus master	Open	Open	Open
V-L bus slave	Closed	Closed	Closed