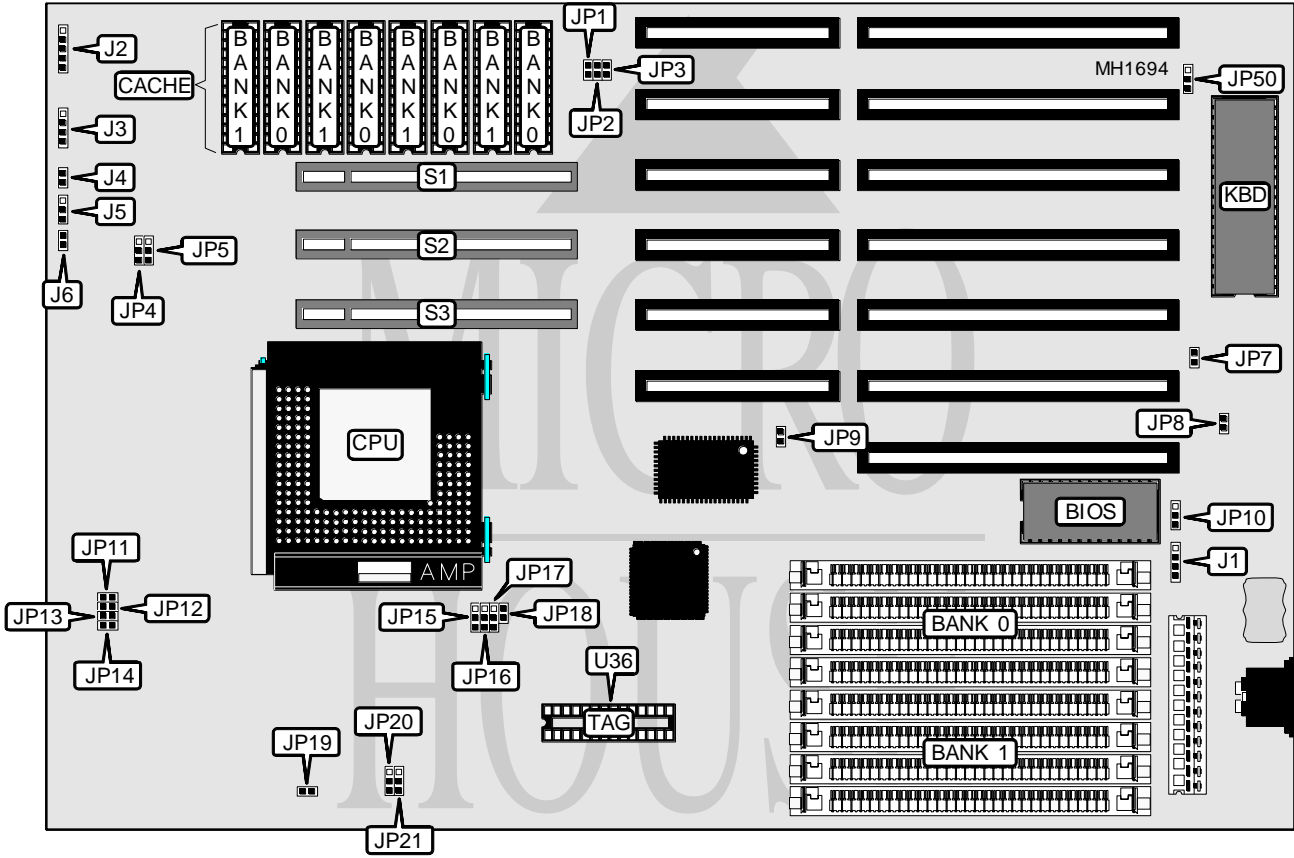


ADVANCED INTEGRATED RESEARCH, INC.

486SH REV. 1.1

Processor	80486SX/80487SX/80486DX/80486DX2/Pentium Overdrive
Processor Speed	20/25/33/40/50(Internal)/50/66(Internal)MHz
Chip Set	SIS
Max. Onboard DRAM	32MB
Cache	64/128/256KB
BIOS	AMI
Dimensions	330mm x 218mm
I/O Options	32-bit VESA local bus slots (3)



CONNECTIONS			
Purpose	Location	Purpose	Location
External battery	J1	Turbo switch	J5
Power LED & keylock	J2	Turbo LED	J6
Speaker	J3	32-bit VESA Local bus slots	S1, S2, & S3
Reset switch	J4		

Continued on next page . . .

ADVANCED INTEGRATED RESEARCH, INC.

486SH REV. 1.1

... continued from previous page

USER CONFIGURABLE SETTINGS		
Function	Jumper	Position
í Monitor type select monochrome, VGA or EGA	JP7	Open
Monitor type select CGA	JP7	Closed
í CMOS memory normal operation	JP10	pins 1 & 2 closed
CMOS memory clear	JP10	pins 2 & 3 closed

DRAM CONFIGURATION		
Size	Bank 0	Bank 1
1MB	(4) 256K x 9	NONE
2MB	(4) 256K x 9	(4) 256K x 9
4MB	(4) 1M x9	NONE
8MB	(4) 1M x9	(4) 1M x9
16MB	(4) 4M x 9	NONE
20MB	(4) 1M x9	(4) 4M x 9
32MB	(4) 4M x 9	(4) 4M x 9

CACHE CONFIGURATION			
Size	Bank 0	Bank 1	TAG/U36
64KB	(4) 8K x 8	(4) 8K x 8	(1) 8K x 8
128KB	(4) 32K x 8	NONE	(1) 32K x 8
256KB	(4) 32K x 8	(4) 32K x 8	(1) 32K x 8

CACHE JUMPER CONFIGURATION					
Size	JP1	JP2	JP3	JP20	JP21
64KB	pins 1 & 2	pins 2 & 3	pins 1 & 2	pins 1 & 2	pins 1 & 2
128KB	pins 1 & 2	pins 1 & 2	pins 2 & 3	pins 1 & 2	pins 2 & 3
256KB	pins 2 & 3	pins 2 & 3	pins 2 & 3	pins 2 & 3	pins 2 & 3

Note: Pins designated should be in the closed position.

CPU TYPE CONFIGURATION				
Type	JP15	JP16	JP18	JP19
486SX (PGA)	pins 2 & 3 closed	Open	Open	Closed
80486SX (PQFP)	pins 2 & 3 closed	Open	Open	Open
80487SX	pins 1 & 2 closed	pins 2 & 3 closed	Closed	Closed
80486DX	pins 1 & 2 closed	pins 1 & 2 closed	Closed	Closed
ODP486SX	pins 1 & 2 closed	pins 2 & 3 closed	Closed	Closed
80486DX2	pins 1 & 2 closed	pins 1 & 2 closed	Closed	Closed
Pentium Overdrive	pins 1 & 2 closed	pins 1 & 2 closed	Closed	Closed

CPU SPEED CONFIGURATION				
Speed	JP5	JP11	JP12	JP14
20MHz	Open	Open	Closed	pins 1 & 2 closed
25MHz	Closed	Closed	Open	pins 1 & 2 closed
33MHz	Closed	Open	Open	pins 1 & 2 closed
40MHz	Open	Closed	Open	pins 2 & 3 closed
50i MHz	Closed	Closed	Open	pins 1 & 2 closed
50MHz	Open	Open	Open	pins 2 & 3 closed
66i MHz	Closed	Open	Open	pins 1 & 2 closed