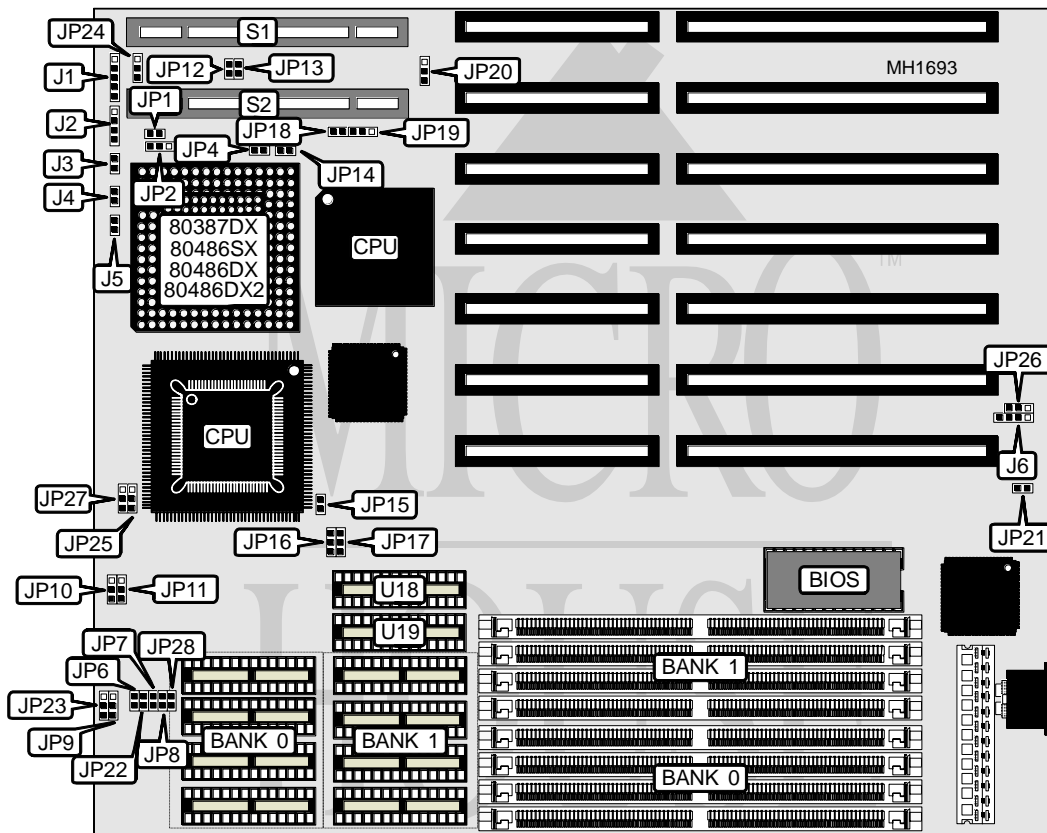


UNIDENTIFIED

OPTI-495SLC-3/486WB CACHE

Processor 80386DX/80486SX/80486DX /80486DX2/ODP486SX
Processor Speed 25/33/40/50/66(internal)MHz
Chip Set OPTI
Max. Onboard DRAM 64MB
Cache 64/128/256KB
BIOS AMI
Dimensions 249mm x 218mm
I/O Options 32-bit VESA local bus slots (2),
NPU Options 80387DX



CONNECTIONS			
Purpose	Location	Purpose	Location
Power LED & keylock	J1	Turbo LED	J5
Speaker	J2	External battery	J6
Turbo switch	J3	32-bit VESA Local bus slots	S1
Reset switch	J4	32-bit VESA Local bus slots	S2

USER CONFIGURABLE SETTINGS			
Function	Jumper/Switch	Position	
í Monitor type select color	JP21	open	
Monitor type select monochrome	JP21	closed	
í Factory configured - do not alter	JP23	open	

Continued on next page . . .

UNIDENTIFIED

OPTI-495SLC-3/486WB

... continued from previous page

DRAM CONFIGURATION		
Size	Bank 0	Bank 1
1MB	(4) 256K x 9	NONE
2MB	(4) 256K x 9	(4) 256K x 9
4MB	(4) 1M x 9	NONE
5MB	(4) 256K x 9	(4) 1M x 9
8MB	(4) 1M x 9	(4) 1M x 9
16MB	(4) 4M x 9	NONE
17MB	(4) 256K x 9	(4) 4M x 9
20MB	(4) 1M x 9	(4) 4M x 9
20MB	(4) 4M x 9	(4) 1M x 9
32MB	(4) 4M x 9	(4) 4M x 9
64MB	(4) 16M x 9	NONE

CACHE CONFIGURATION				
Size	Bank 0	Bank 1	TAG(U18)	TAG(U19)
64KB	(4) 8K x 8	(4) 8K x 8	(1) 8K x 8	NONE
128KB	(4) 32K x 8	NONE	(1) 8K x 8	NONE
256KB	(4) 32K x 8	(4) 32K x 8	(1) 8K x 8	(1) 8K x 8
256KB	(4) 32K x 8	(4) 32K x 8	(1) 32K x 8	NONE

CACHE SIZE JUMPER CONFIGURATION				
Size	JP10	JP11	JP16	JP17
64KB	pins 2 & 3 closed	pins 2 & 3 closed	open	open
128KB	pins 1 & 2 closed	pins 1 & 2 closed	closed	open
256KB	pins 2 & 3 closed	pins 2 & 3 closed	closed	closed

80386 AND CX80486DLC CPU CONFIGURATION					
Speed	JP6	JP7	JP8	JP9	JP22
33MHz	closed	closed	open	pins 2 & 3	open
33MHz	closed	closed	open	pins 2 & 3	open
40MHz	closed	closed	closed	pins 2 & 3	open

Note: Pins designated should be in the closed position.

CPU TYPE SELECT								
CPU Type	JP2	JP14	JP15	JP18	JP19	JP20	JP25	JP27
80386DX(PQFP)	N/A	open	open	N/A	N/A	2 & 3	1 & 2	1 & 2
80386DX(PGA)	N/A	open	closed	N/A	N/A	2 & 3	1 & 2	1 & 2
80486DLC(PGA)	N/A	closed	closed	N/A	N/A	1 & 2	2 & 3	2 & 3
80486SX(PGA)	open	closed	closed	open	2 & 3	1 & 2	2 & 3	2 & 3
80487SX	2 & 3	N/A	N/A	closed	1 & 2	N/A	N/A	N/A
80486DX	1 & 2	closed	closed	closed	1 & 2	1 & 2	2 & 3	2 & 3
ODP80486	2 & 3	closed	closed	closed	1 & 2	1 & 2	2 & 3	2 & 3
80486DX2	1 & 2	closed	closed	closed	1 & 2	1 & 2	2 & 3	2 & 3

Note: Pins designated should be in the closed position.

Continued on next page ...

UNIDENTIFIED

OPTI-495SLC-3/486WB

... continued from previous page

CPU SPEED CONFIGURATION					
CPU Type	JP6	JP7	JP8	JP9	JP22
25MHz	open	open	open	pins 1 & 2	closed
33MHz	open	open	closed	pins 1 & 2	open
40MHz	open	closed	closed	pins 1 & 2	open
50i MHz	open	open	open	pins 1 & 2	closed
50MHz	open	closed	open	pins 1 & 2	open
66i MHz	open	open	closed	pins 1 & 2	open
Note: Pins designated should be in the closed position.					