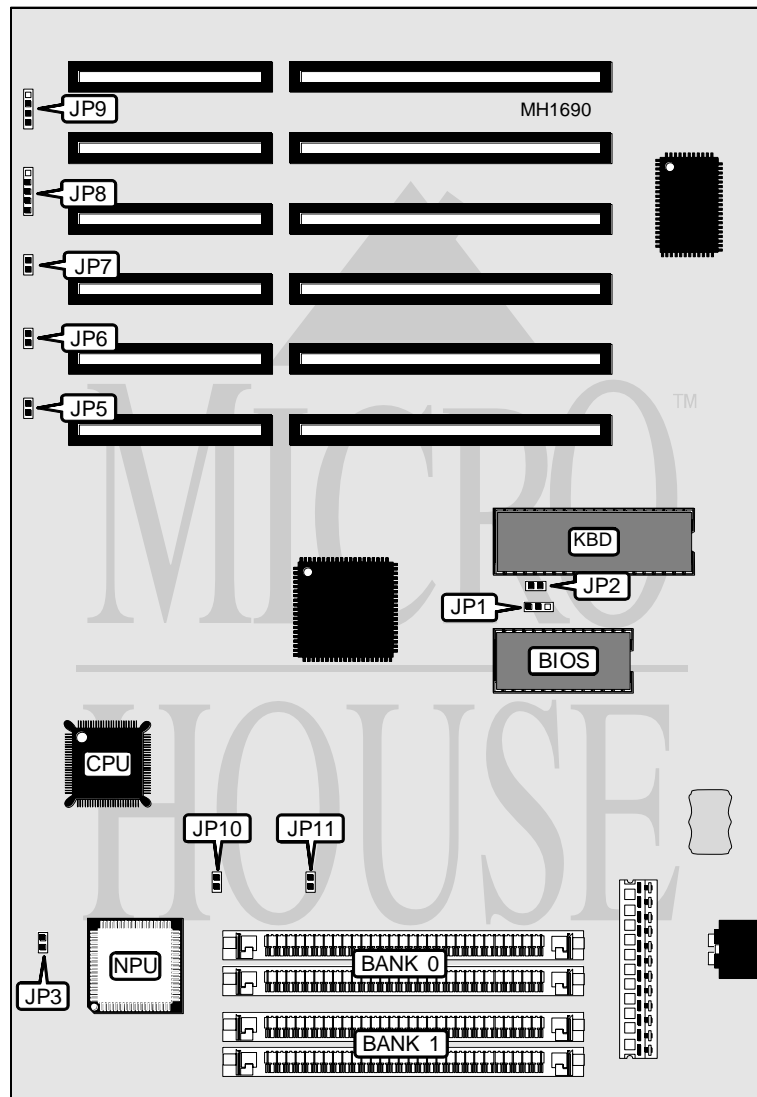


MICROMEDIA TECHNOLOGIES, INC.

386-AD III

Processor	80386SX/CX486SLC
Processor Speed	20/25/33/40MHz
Chip Set	SARC
Max. Onboard DRAM	16MB
Cache	None
BIOS	AMI
Dimensions	290mm x 200mm
I/O Options	None
NPU Options	80387SX



Continued on next page . . .

MICROMEDIA TECHNOLOGIES, INC.
386 - A D III

... continued from previous page

CONNECTIONS			
Purpose	Location	Purpose	Location
External battery	JP1	Turbo LED	JP7
Turbo switch	JP5	Power LED & keylock	JP8
Reset switch	JP6	Speaker	JP9

USER CONFIGURABLE SETTINGS		
Function	Jumper	Position
í Monitor type select color	JP2	Closed
Monitor type select monochrome	JP2	Open
í NPU synchronous with CPU	JP3	pins 1 & 2 closed
NPU asynchronous	JP3	pins 2 & 3 closed

DRAM CONFIGURATION		
Size	Bank 0	Bank 1
512KB	(2) 256K x 9	NONE
1MB	(2) 256K x 9	(2) 256K x 9
2MB	(2) 1M x 9	NONE
4MB	(2) 1M x 9	(2) 1M x 9
8MB	(2) 4M x 9	NONE
16MB	(2) 4M x 9	(2) 4M x 9

CPU SPEED CONFIGURATION		
Speed	JP10	JP11
20MHz	pins 1 & 2 closed	pins 1 & 2 closed
25MHz	pins 1 & 2 closed	pins 2 & 3 closed
33MHz	pins 2 & 3 closed	pins 1 & 2 closed
40MHz	pins 2 & 3 closed	pins 2 & 3 closed