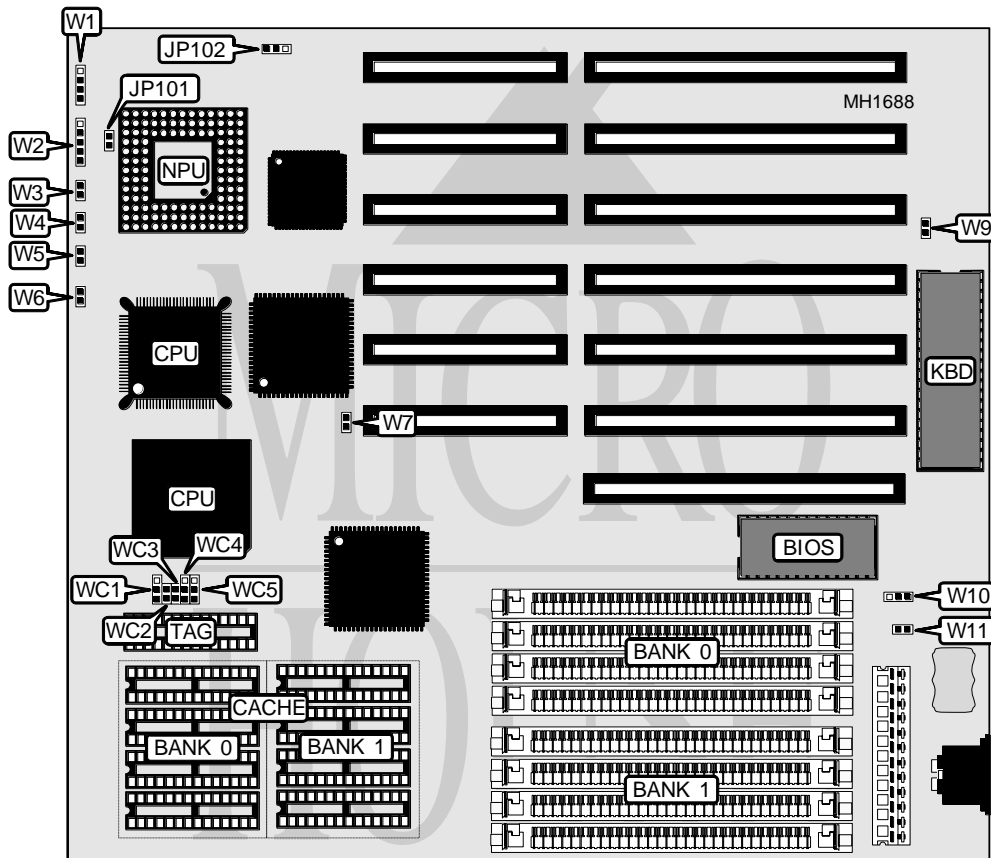


MICROMEDIA TECHNOLOGIES, INC.

386 - U

Processor	80386DX/CX486DLC
Processor Speed	33/40MHz
Chip Set	UMC
Max. Onboard DRAM	32MB
Cache	64/128/256KB
BIOS	AMI
Dimensions	220mm x 220mm
I/O Options	None
NPU Options	80387DX/3167



CONNECTIONS			
Purpose	Location	Purpose	Location
Speaker	W1	Turbo switch	W4
Power LED & keylock	W2	Turbo LED	W5
Reset switch	W3		

Continued on next page . . .

MICROMEDIA TECHNOLOGIES, INC.

386 - U

... continued from previous page

USER CONFIGURABLE SETTINGS		
Function	Jumper	Position
í Factory configured - do not alter	W9	N/A
í Factory configured - do not alter	W10	N/A
í CMOS memory normal operation	W11	pins 1 & 2 closed
CMOS memory clear	W11	pins 2 & 3 closed

DRAM CONFIGURATION		
Size	Bank 0	Bank 3
1MB	(4) 256K x 9	NONE
2MB	(4) 256K x 9	(4) 256K x 9
4MB	(4) 1M x 9	NONE
5MB	(4) 1M x 9	(4) 256K x 9
8MB	(4) 1M x 9	(4) 1M x 9
16MB	(4) 4M x 9	NONE
32MB	(4) 4M x 9	(4) 1M x 9

CACHE CONFIGURATION			
Size	Bank 0	Bank 1	TAG
64KB	(4) 8K x 8	(4) 8K x 8	(1) 8K x 8
128KB	(4) 32K x 8	NONE	(1) 8K x 8
256KB	(4) 32K x 8	(4) 32K x 8	(1) 32K x 8

CACHE JUMPER CONFIGURATION					
Size	WC1	WC2	WC3	WC4	WC5
64KB	pins 2 & 3	Open	Open	pins 1 & 2	pins 1 & 2
128KB	pins 1 & 2	Open	Closed	pins 1 & 2	pins 2 & 3
256KB	pins 2 & 3	Closed	Closed	pins 2 & 3	pins 2 & 3

Note: Pins designated should be in the closed position.

NPU CONFIGURATION					
NPU	Mode	JP101	JP102	W6	W7
Enabled	Sync.	Open	pins 2 & 3	Closed	Closed
Disabled	Async.	Closed	pins 1 & 2	Open	Open

Note: Pins designated should be in the closed position.