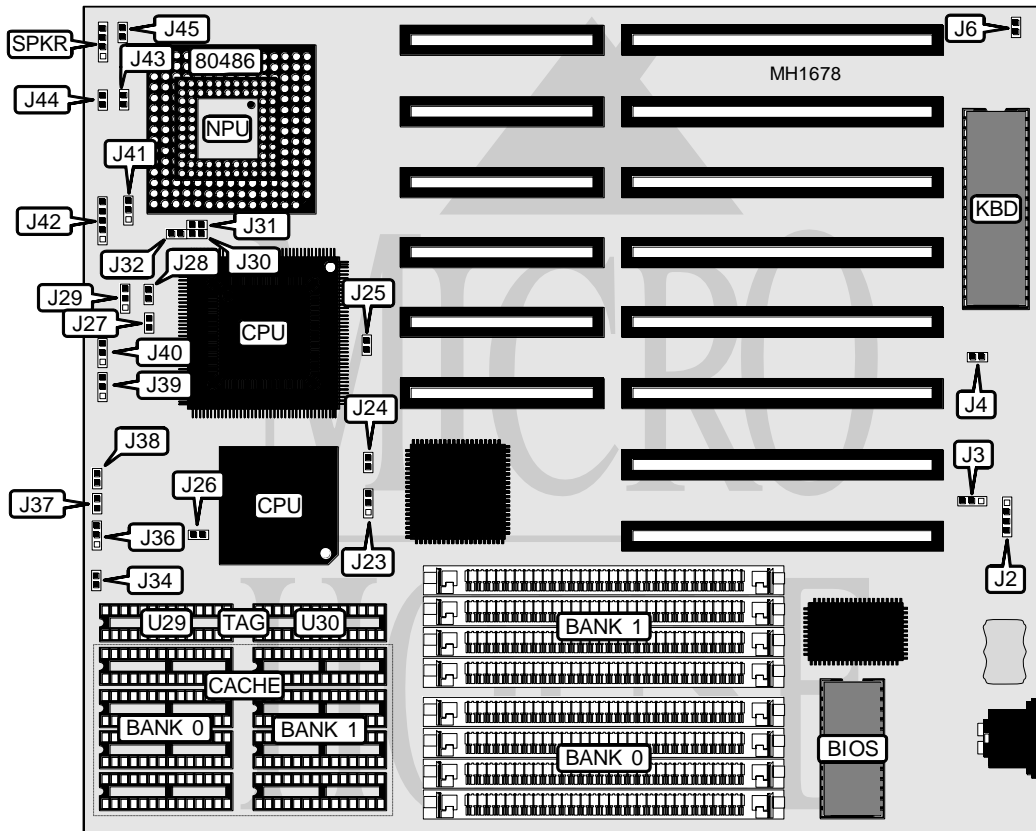


# AMERICAN DIGICOM CORPORATION

## DIGIS - 3486HN

<b>Processor</b>	CX486DLC/80386DX/80486SX/80487SX/80486DX/80486DX2
<b>Processor Speed</b>	20/25/33/40/50(internal)/50/66(internal)MHz
<b>Chip Set</b>	OPTi
<b>Max. Onboard DRAM</b>	32MB
<b>Cache</b>	64/128/256KB
<b>BIOS</b>	AMI
<b>Dimensions</b>	330mm x 218mm
<b>I/O Options</b>	None
<b>NPU Options</b>	None



CONNECTIONS			
Purpose	Location	Purpose	Location
External battery	J2	Turbo LED	J44
Power LED & keylock	J42	Reset switch	J45
Turbo switch	J43	Speaker	SPKR

Continued on next page . . .

# AMERICAN DIGICOM CORPORATION

## DIGIS - 3486HN

... continued from previous page

USER CONFIGURABLE SETTINGS		
Function	Jumper	Position
í CMOS memory normal operation	J3	pins 2 & 3 closed
CMOS memory clear	J3	pins 1 & 2 closed
í Monitor type select color	J6	Closed
Monitor type select monochrome	J6	Open
í Supports CYRIX CPU	JP25	Closed
Supports other CPU	JP26	Open

DRAM CONFIGURATION		
Size	Bank 0	Bank 1
1MB	(4) 256K x 9	NONE
2MB	(4) 256K x 9	(4) 256K x 9
4MB	(4)1M x 9	NONE
5MB	(4) 256K x 9	(4) 1M x 9
8MB	(4) 1M x 9	(4) 1M x 9
16MB	(4) 4M x 9	NONE
20MB	(4) 4M x 9	(4) 4M x 9
20MB	(4) 1M x 9	(4) 1M x 9
32MB	(4) 4M x 9	(4) 4M x 9

CACHE CONFIGURATION					
Size	Max Cachable	Bank 0	Bank 1	TAG/U29	TAG/U30
64KB	8MB	(4) 8K x 8	(4) 8K x 8	(1) 8K x 8	NONE
128KB	16MB	(4) 32K x 8	NONE	(1) 8K x 8	NONE
256KB	32MB	(4) 32K x 8	(4) 32K x 8	(1) 8K x 8	(1) 8K x 8

CACHE JUMPER CONFIGURATION				
Size	J34	J36	J37	J38
64KB	Open	pins 2 & 3 closed	Open	Open
128KB	Closed	pins 1 & 2 closed	Closed	Closed
256KB	Closed	pins 2 & 3 closed	Closed	Closed

CPU SPEED CONFIGURATION				
Speed	J30	J32	J39	J40
20MHz	Closed	Closed	pins 1 & 2 closed	pins 1 & 2 closed
25MHz	Open	Open	pins 1 & 2 closed	pins 1 & 2 closed
33MHz	Open	Closed	pins 1 & 2 closed	pins 1 & 2 closed
40MHz	Closed	Closed	pins 1 & 2 closed	pins 2 & 3 closed
50i MHz	Open	Open	pins 1 & 2 closed	pins 1 & 2 closed
50MHz	Open	Open	pins 2 & 3 closed	pins 2 & 3 closed
66i MHz	Open	Closed	pins 2 & 3 closed	pins 2 & 3 closed

Continued on next page ...

# AMERICAN DIGICOM CORPORATION

## DIGIS - 3486HN

... continued from previous page

CPU TYPE CONFIGURATION							
Type	J23	J24	J27	J28	J29	J31	J41
CX486DLC	1 & 2	Closed	N/A	N/A	N/A	Open	N/A
80386DX PGA	1 & 2	Closed	N/A	N/A	N/A	Open	N/A
80386DX PQFP	1 & 2	Open	N/A	N/A	N/A	Open	N/A
80486SX PGA	2 & 3	N/A	Closed	Open	2 & 3	Closed	Open
80486SX PQFP	2 & 3	N/A	Open	Closed	2 & 3	Closed	Open
80487SX	2 & 3	N/A	Closed	Open	2 & 3	Closed	2 & 3
80486DX	2 & 3	N/A	Closed	Closed	1 & 2	Closed	1 & 2
80486DX2	2 & 3	N/A	Closed	Closed	1 & 2	Closed	1 & 2

Note: Pins designated should be in the closed position.