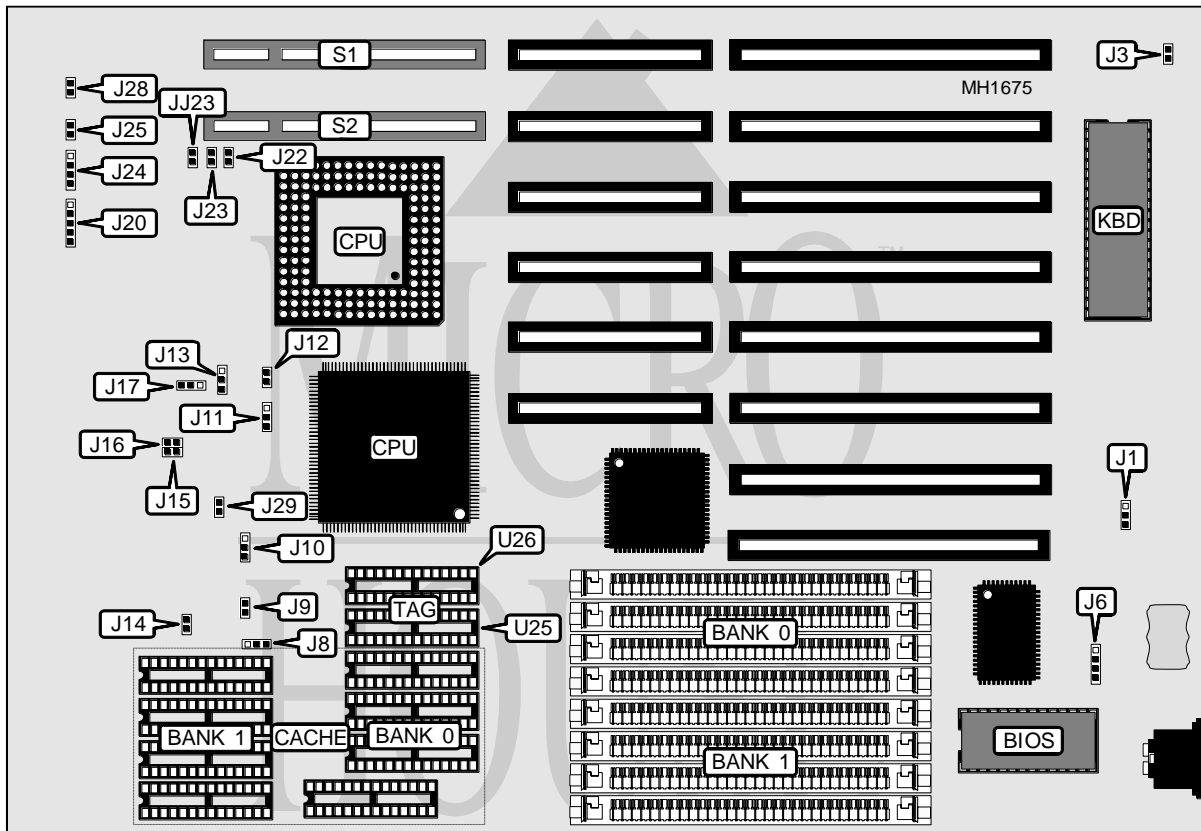


AMERICAN DIGICOM CORPORATION

DIGIS - 486NL

| | |
|--------------------------|------------------------------------|
| Processor | 80486SX/80486DX/80486DX2 |
| Processor Speed | 25/33/50(internal)/50/66(internal) |
| Chip Set | OPTI |
| Max. Onboard DRAM | 32MB |
| Cache | 64/128/256KB |
| BIOS | AMI |
| Dimensions | 330mm x 218mm |
| I/O Options | 32-bit VESA local bus slots (2) |
| NPU Options | None |



| CONNECTIONS | | | |
|---------------------|----------|----------------------------|----------|
| Purpose | Location | Purpose | Location |
| External battery | J6 | Turbo switch | JJ23 |
| Power LED & keylock | J20 | Speaker | J24 |
| Reset switch | J22 | 32-bit VESA Local bus slot | S1 |
| Turbo LED | J23 | 32-bit VESA Local bus slot | S2 |

Continued on next page . . .

AMERICAN DIGICOM CORPORATION

DIGIS - 486NL

... continued from previous page

USER CONFIGURABLE SETTINGS

| Function | Jumper/Switch | Position |
|--------------------------------|---------------|-------------------|
| í CMOS memory normal operation | J1 | pins 2 & 3 closed |
| CMOS memory clear | J1 | pins 1 & 2 closed |
| í Monitor type select color | J3 | Closed |
| Monitor type select monochrome | J3 | Open |
| CPU type select PGA | J29 | Closed |
| CPU type select PQFP | J29 | Open |

DRAM CONFIGURATION

| Size | Bank 0 | Bank 1 |
|------|--------------|--------------|
| 1MB | (4) 256K x 9 | NONE |
| 2MB | (4) 256K x 9 | (4) 256K x 9 |
| 4MB | (4) 1M x 9 | NONE |
| 5MB | (4) 256K x 9 | (4) 1M x 9 |
| 8MB | (4) 1M x 9 | (4) 1M x 9 |
| 16MB | (4) 4M x 9 | NONE |
| 20MB | (4) 4M x 9 | (4) 1M x 9 |
| 32MB | (4) 4M x 9 | (4) 4M x 9 |

CPU TYPE CONFIGURATION

| Type | J11 | J12 | J13 |
|----------|-------------------|--------|-------------------|
| 80486SX | pins 1 & 2 closed | Open | pins 2 & 3 closed |
| 80486DX | pins 2 & 3 closed | Closed | pins 1 & 2 closed |
| 80486DX2 | pins 2 & 3 closed | Closed | pins 1 & 2 closed |

CPU SPEED CONFIGURATION

| Speed | Wait states | J15 | J16 | J17 | J25 | J28 |
|---------|-------------|--------|--------|------------|--------|--------|
| 25MHz | 0 | Closed | Open | pins 1 & 2 | Open | Open |
| 33MHz | 0 | Open | Closed | pins 1 & 2 | Open | Open |
| 50i Mhz | 0 | Closed | Open | pins 1 & 2 | Open | Open |
| 50MHz | 1 | Closed | Open | pins 2 & 3 | Closed | Closed |
| 66i MHz | 0 | Open | Closed | pins 1 & 2 | Open | Open |

CACHE CONFIGURATION

| Size | Max Cachable | Bank 0 | Bank 1 | TAG (U25) | TAG (U26) |
|-------|--------------|-------------|-------------|------------|------------|
| 64KB | 8MB | (4) 8K x 8 | (4) 8K x 8 | NONE | (1) 8K x 8 |
| 128KB | 16MB | (4) 32K x 8 | NONE | NONE | (1) 8K x 8 |
| 256KB | 32MB | (4) 32K x 8 | (4) 32K x 8 | (1) 8K x 8 | (1) 8K x 8 |

CACHE JUMPER CONFIGURATION

| Size | J8 | J9 | J10 | J14 |
|-------|-------------------|--------|-------------------|--------|
| 64KB | pins 2 & 3 closed | Open | pins 1 & 2 closed | Open |
| 128KB | pins 1 & 2 closed | Closed | pins 2 & 3 closed | Closed |
| 256KB | pins 2 & 3 closed | Closed | pins 1 & 2 closed | Closed |