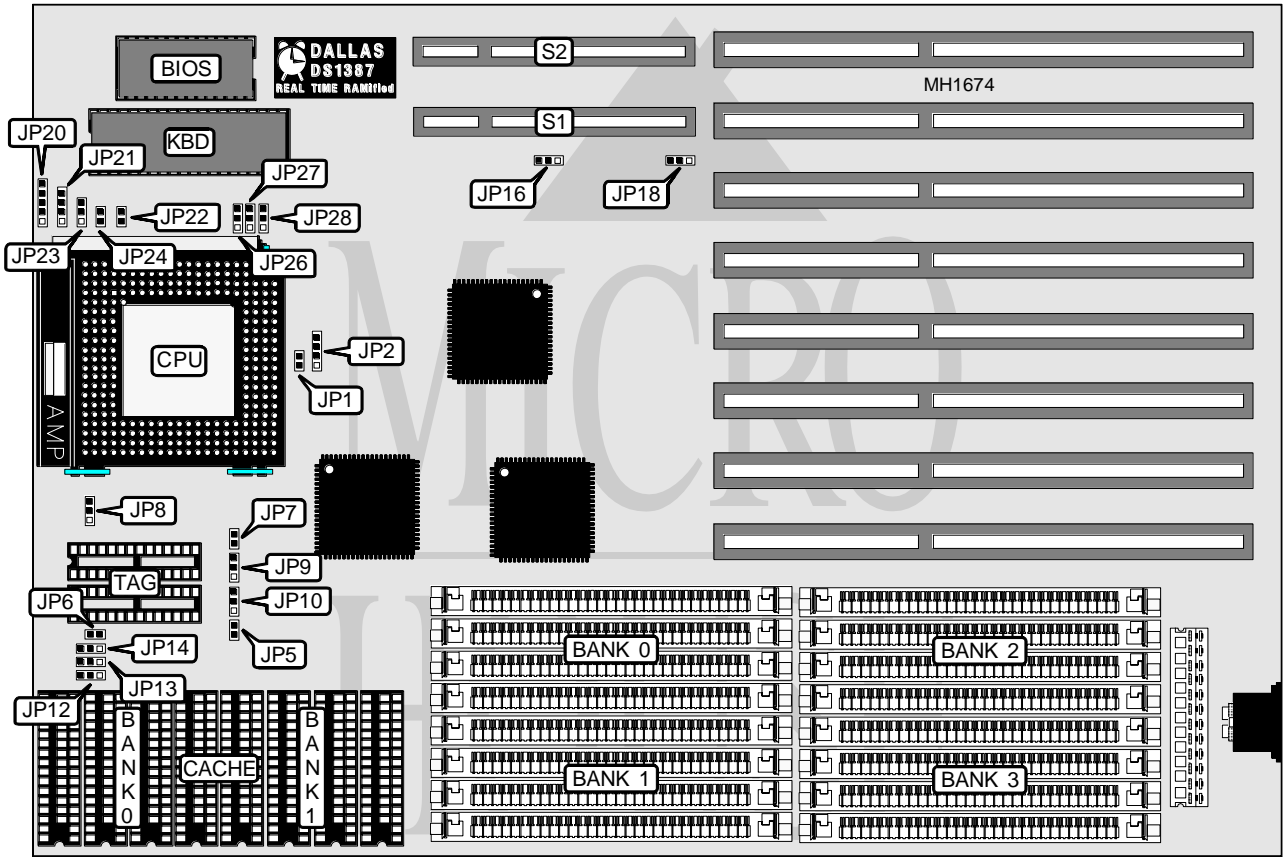


TYAN COMPUTER CORPORATION

486VL EISA VESA LOCAL BUS (REV. 1.0)

Processor	80486SX/80487SX/80486DX/80486DX2
Processor Speed	20/25/33/50 (Internal)/50/66 (Internal)MHz
Chip Set	SIS
Max. Onboard DRAM	256MB
Cache	64/128/256/512/1024KB
BIOS	AMI
Dimensions	330mm x 220mm
I/O Options	32-bit VESA local bus slots (2)
NPU Options	None



CONNECTIONS			
Purpose	Location	Purpose	Location
Power LED & keylock	JP20	Turbo switch	JP23
Speaker	JP21	Turbo LED	JP24
Reset switch	JP22	32-bit VESA Local bus slots	S1 & S2

Continued on next page . . .

TYAN COMPUTER CORPORATION

486VL EISA VESA LOCAL BUS (REV. 1.0)

. continued from previous page.

USER CONFIGURABLE SETTINGS		
Function	Jumper/Switch	Position
í Factory configured - do not alter	JP18	Open

DRAM CONFIGURATION				
Size	Bank 0	Bank 1	Bank 2	Bank 3
4MB	(4) 1M x 9	NONE	NONE	NONE
8MB	(4) 1M x 9	(4) 1M x 9	NONE	NONE
12MB	(4) 1M x 9	(4) 1M x 9	(4) 1M x 9	NONE
16MB	(4) 1M x 9	(4) 1M x 9	(4) 1M x 9	(4) 1M x 9
16MB	(4) 4M x 9	NONE	NONE	NONE
20MB	(4) 1M x 9	(4) 4M x 9	NONE	NONE
24MB	(4) 1M x 9	(4) 1M x 9	(4) 4M x 9	NONE
28MB	(4) 1M x 9	(4) 1M x 9	(4) 1M x 9	(4) 4M x 9
32MB	(4) 4M x 9	(4) 4M x 9	NONE	NONE
36MB	(4) 1M x 9	(4) 4M x 9	(4) 4M x 9	NONE
40MB	(4) 1M x 9	(4) 1M x 9	(4) 4M x 9	(4) 4M x 9
48MB	(4) 4M x 9	(4) 4M x 9	(4) 4M x 9	NONE
52MB	(4) 1M x 9	(4) 4M x 9	(4) 4M x 9	(4) 4M x 9
64MB	(4) 4M x 9	(4) 4M x 9	(4) 4M x 9	(4) 4M x 9
64MB	(4) 16M x 9	NONE	NONE	NONE
128MB	(4) 16M x 9	(4) 16M x 9	NONE	NONE
192MB	(4) 16M x 9	(4) 16M x 9	(4) 16M x 9	NONE
256MB	(4) 16M x 9	(4) 16M x 9	(4) 16M x 9	(4) 16M x 9

CACHE CONFIGURATION				
Size	Bank 0	Bank 1	TAG (U15)	TAG (U16)
64KB	(4) 8K x 8	(4) 8K x 8	(1) 8K x 8	NONE
128KB	(4) 32K x 8	Bank 0	(1) 8K x 8	NONE
256KB	(4) 32K x 8	(4) 32K x 8	(1) 8K x 8	NONE
512KB	(8) 32K x 8	(8) 32K x 8	(1) 32K x 8	NONE
1024KB	(8) 128K x 8	NONE	(1) 32K x 8	(1) 32K x 8

CACHE JUMPER CONFIGURATION									
Size	JP5	JP6	JP7	JP8	JP9	JP10	JP12	JP13	JP14
64KB	Open	Open	Open	2 & 3	1 & 2	1 & 2	Open	2 & 3	1 & 2
128KB	Closed	Open	Open	2 & 3	1 & 2	1 & 2	Open	1 & 2	1 & 2
256KB	Closed	Closed	Open	2 & 3	2 & 3	1 & 2	Open	2 & 3	2 & 3
512KB	Closed	Closed	Closed	2 & 3	1 & 2	1 & 2	1 & 2	1 & 2	1 & 2
1024KB	Closed	Closed	Closed	1 & 2	1 & 2	2 & 3	2 & 3	2 & 3	2 & 3

Note: Pins designated should be in the closed position.

Continued on next page . . .

TYAN COMPUTER CORPORATION

486VL EISA VESA LOCAL BUS (REV. 1.0)

... continued from previous page.

CPU TYPE CONFIGURATION		
Type	JP1	JP2
80486SX	Pins 1 & 2 closed	pins 2 & 3 closed
80487SX	Pins 1 & 2 closed	pins 2 & 3 closed
80486DX	Pins 2 & 3 closed	pins 1 & 2, 3 & 4 closed
80486DX2	Pins 2 & 3 closed	pins 1 & 2, 3 & 4 closed

CPU SPEED CONFIGURATION	
Speed	JP16
≤33MHz	pins 2 & 3 closed
>33MHz	pins 1 & 2 closed