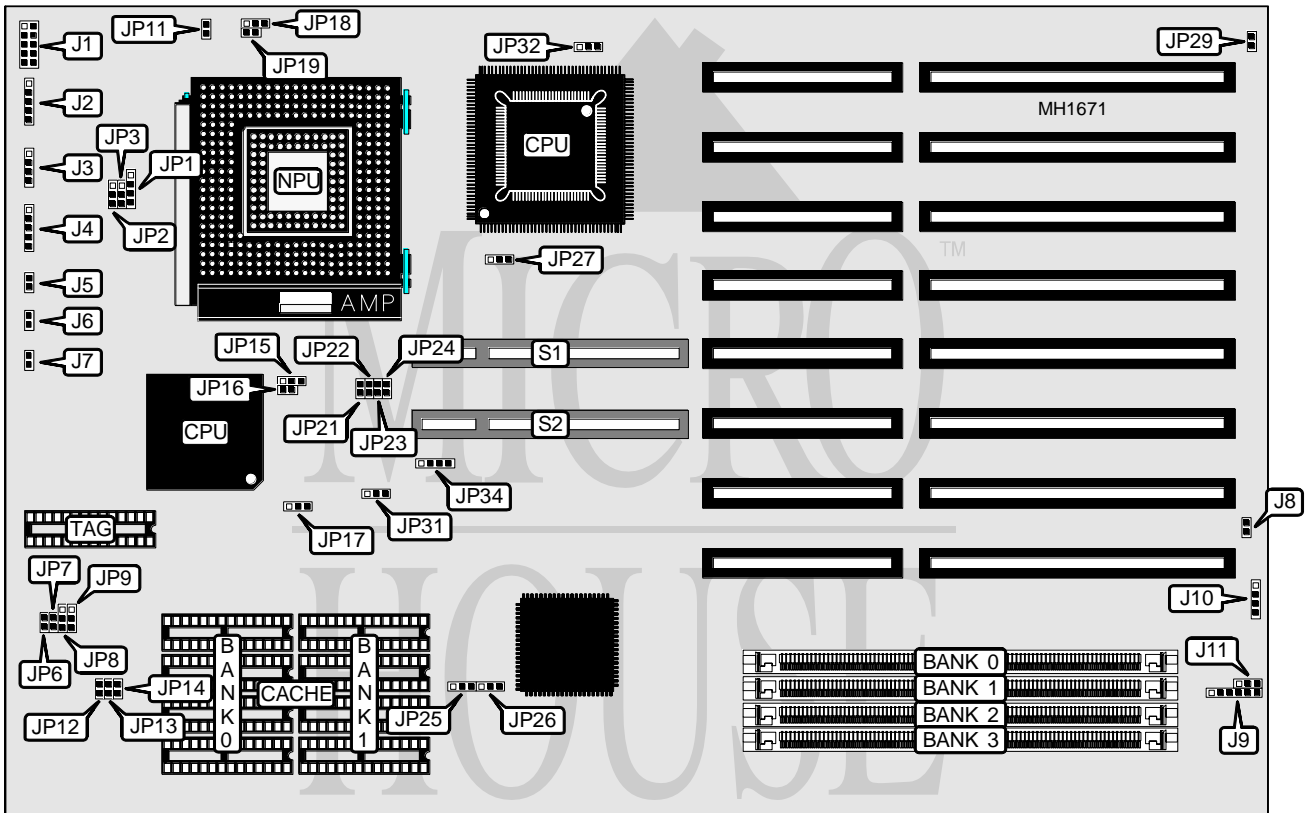


DIAMOND FLOWER, INC.

3486-OCV

Processor	80386DX/CX486DLC/80486SX/80487SX/ODP486DX/80486DX/80486DX2/ODP586SX
Processor Speed	20/25/33/50(Internal)/50/66(Internal)MHz
Chip Set	OPTI
Max. Onboard DRAM	64MB
Cache	64/128/256KB
BIOS	AMI
Dimensions	330mm x 218mm
I/O Options	32-bit VESA slots (2)
NPU Options	80387DX



CONNECTIONS			
Purpose	Location	Purpose	Location
Diagnostic LCD port	J1	Reset switches	J6 & J8
Keyboard connector	J2	Turbo Switch	J7
Speaker	J3	PS/2 mouse connector	J9
Power LED & keylock	J4	External Battery	J10
Turbo LED	J5	32-bit VESA slots (2)	S1 & S2

Continued on next page . . .

DIAMOND FLOWER, INC.

3486-OCV

... continued from previous page

USER CONFIGURABLE SETTINGS		
Function	Jumper	Position
í CMOS memory normal operation (Internal Battery)	J11	pins 1 & 2 closed
CMOS memory normal operation (External Battery)	J11	Open
CMOS memory clear	J11	pins 2 & 3 closed
í Factory configured - do not alter	JP10	Open
í Factory configured - do not alter	JP11	Closed
í Monitor type select color	JP29	Closed
Monitor type select monochrome	JP29	Open
í BIOS ROM type select 2764	JP32	Open
í BIOS ROM type select 27128 or Flash RAM 28f010	JP32	pins 1 & 2 closed
í BIOS ROM type select Flash RAM 28f001	JP32	pins 2 & 3 closed
í Factory configured - do not alter	JP33	Closed
Note: The location of JP10, JP28 and JP33 are unknown.		

DRAM CONFIGURATION				
Size	Bank 0	Bank 1	Bank 2	Bank 3
1MB	256K x 36	NONE	NONE	NONE
2MB	256K x 36	256K x 36	NONE	NONE
2MB	512K x 36	NONE	NONE	NONE
3MB	256K x 36	256K x 36	256K x 36	NONE
4MB	256K x 36	256K x 36	256K x 36	256K x 36
4MB	512K x 36	512K x 36	NONE	NONE
4MB	1M x 36	NONE	NONE	NONE
6MB	512K x 36	512K x 36	512K x 36	NONE
8MB	512K x 36	512K x 36	512K x 36	512K x 36
8MB	1M x 36	1M x 36	NONE	NONE
8MB	2M x 36	NONE	NONE	NONE
9MB	2M x 36	256K x 36	NONE	NONE
10MB	2M x 36	256K x 36	256K x 36	NONE
10MB	2M x 36	512K x 36	NONE	NONE
11MB	2M x 36	256K x 36	256K x 36	256K x 36
12MB	2M x 36	512K x 36	512K x 36	NONE
12MB	2M x 36	1M x 36	NONE	NONE
12MB	1M x 36	1M x 36	NONE	NONE
14MB	2M x 36	512K x 36	512K x 36	512K x 36
16MB	2M x 36	1M x 36	1M x 36	NONE
16MB	2M x 36	2M x 36	NONE	NONE
16MB	1M x 36	1M x 36	1M x 36	1M x 36
16MB	4M x 36	NONE	NONE	NONE
20MB	2M x 36	2M x 36	1M x 36	NONE
20MB	4M x 36	1M x 36	NONE	NONE
24MB	2M x 36	2M x 36	1M x 36	1M x 36
24MB	4M x 36	1M x 36	1M x 36	NONE
24MB	4M x 36	2M x 36	NONE	NONE
24MB	2M x 36	2M x 36	2M x 36	NONE

Continued on next page ...

DIAMOND FLOWER, INC.

3486-OCV

... continued from previous page

DRAM CONFIGURATION (continued)				
Size	Bank 0	Bank 1	Bank 2	Bank 3
28MB	4M x 36	1M x 36	1M x 36	1M x 36
32MB	2M x 36	2M x 36	2M x 36	2M x 36
32MB	4M x 36	4M x 36	NONE	NONE
32MB	8M x 36	NONE	NONE	NONE
32MB	4M x 36	2M x 36	2M x 36	NONE
36MB	4M x 36	4M x 36	1M x 36	NONE
36MB	8M x 36	1M x 36	NONE	NONE
40MB	4M x 36	2M x 36	2M x 36	2M x 36
40MB	4M x 36	4M x 36	1M x 36	1M x 36
40MB	4M x 36	4M x 36	2M x 36	NONE
40MB	8M x 36	1M x 36	1M x 36	NONE
40MB	8M x 36	2M x 36	NONE	NONE
44MB	8M x 36	1M x 36	1M x 36	1M x 36
48MB	4M x 36	4M x 36	2M x 36	2M x 36
48MB	8M x 36	2M x 36	2M x 36	NONE
48MB	4M x 36	4M x 36	4M x 36	NONE
48MB	8M x 36	4M x 36	NONE	NONE
56MB	8M x 36	2M x 36	2M x 36	2M x 36
64MB	4M x 36	4M x 36	4M x 36	4M x 36
64MB	8M x 36	8M x 36	NONE	NONE
64MB	8M x 36	4M x 36	4M x 36	NONE
64MB	16M x 36	NONE	NONE	NONE

CACHE CONFIGURATION			
Size	Bank 0	Bank 1	TAG
64KB	(4) 8K x 8	(4) 8K x 8	8K x 8
128KB	(4) 32K x 8	NONE	8K x 8
256KB	(4) 32K x 8	(4) 32K x 8	16K x 8/32K x 8

CACHE JUMPER CONFIGURATION				
Size	JP6	JP7	JP8	JP9
64KB	Open	Open	pins 2 & 3 closed	pins 2 & 3 closed
128KB	Closed	Open	pins 1 & 2 closed	pins 1 & 2 closed
256KB	Closed	Closed	pins 2 & 3 closed	pins 2 & 3 closed

VESA CPU TYPE CONFIGURATION				
CPU Type	JP15	JP16	JP21	JP22
80386	pins 2 & 3 closed	Open	Open	Closed
80486	pins 1 & 2 closed	Closed	Closed	Open

VESA WAIT STATE/BUS SPEED (ID2 & ID3) CONFIGURATION			
CPU speed	Wait states	JP24 (ID3)	JP23 (ID2)
≤ 33MHz	0 wait states	Closed	Closed
> 33MHz	1 wait state	Open	Open

Continued on next page . . .

DIAMOND FLOWER, INC.
3486-OCV

... continued from previous page

VESA BUS READY SIGNAL CONFIGURATION		
Signal	JP18	JP34
Delay 1 PCLK	pins 1 & 2 closed	pins 1 & 2, 3 & 4 closed
No Delay	pins 2 & 3 closed	pins 2 & 3 closed

CPU TYPE CONFIGURATION						
Type	JP1	JP2	JP3	JP17	JP19	JP27
80386DX	N/A	N/A	N/A	N/A	Open	pins 1 & 2
CX486DLC	N/A	N/A	N/A	N/A	Open	pins 1 & 2
486SX/PGA	pins 2 & 3	Open	pins 1 & 2	pins 1 & 2	Closed	pins 2 & 3
486SX/PQFP	1 & 2, 3 & 4	pins 1 & 2	pins 2 & 3	pins 2 & 3	Closed	pins 2 & 3
80487SX	1 & 2, 3 & 4	pins 1 & 2	pins 2 & 3	pins 2 & 3	Closed	pins 2 & 3
80486DX	1 & 2, 3 & 4	pins 2 & 3	pins 1 & 2	pins 1 & 2	Closed	pins 2 & 3
80486DX2	1 & 2, 3 & 4	pins 2 & 3	pins 1 & 2	pins 1 & 2	Closed	pins 2 & 3
ODP586SX	1 & 2, 3 & 4	pins 1 & 2	pins 2 & 3	pins 1 & 2	Closed	pins 2 & 3

Note: Pins designated should be in the closed position.

CPU SPEED CONFIGURATION						
Speed	JP12	JP13	JP14	JP25	JP26	JP31
386DX/25	Open	Open	Closed	pins 2 & 3	pins 2 & 3	pins 1 & 2
386DX/33	Closed	Open	Closed	pins 2 & 3	pins 2 & 3	pins 1 & 2
386DX/40	Open	Closed	Closed	pins 2 & 3	pins 2 & 3	pins 1 & 2
486DLC/25	Open	Open	Closed	pins 2 & 3	pins 2 & 3	pins 1 & 2
486DLC/33	Closed	Open	Closed	pins 2 & 3	pins 2 & 3	pins 1 & 2
486DLC/40	Open	Closed	Closed	pins 2 & 3	pins 2 & 3	pins 1 & 2
486SX/DX25	Open	Open	Closed	pins 2 & 3	pins 1 & 2	pins 1 & 2
486SX/DX33	Closed	Open	Closed	pins 2 & 3	pins 1 & 2	pins 1 & 2
486DX/40	Closed	Closed	Open	pins 1 & 2	pins 1 & 2	pins 1 & 2
486DX/50	Open	Open	Closed	pins 1 & 2	pins 1 & 2	pins 1 & 2
80486DX2/50i	Open	Open	Closed	pins 2 & 3	pins 1 & 2	pins 1 & 2
80486DX2/66i	Closed	Open	Closed	pins 2 & 3	pins 1 & 2	pins 1 & 2

Note: Pins designated should be in the closed position.