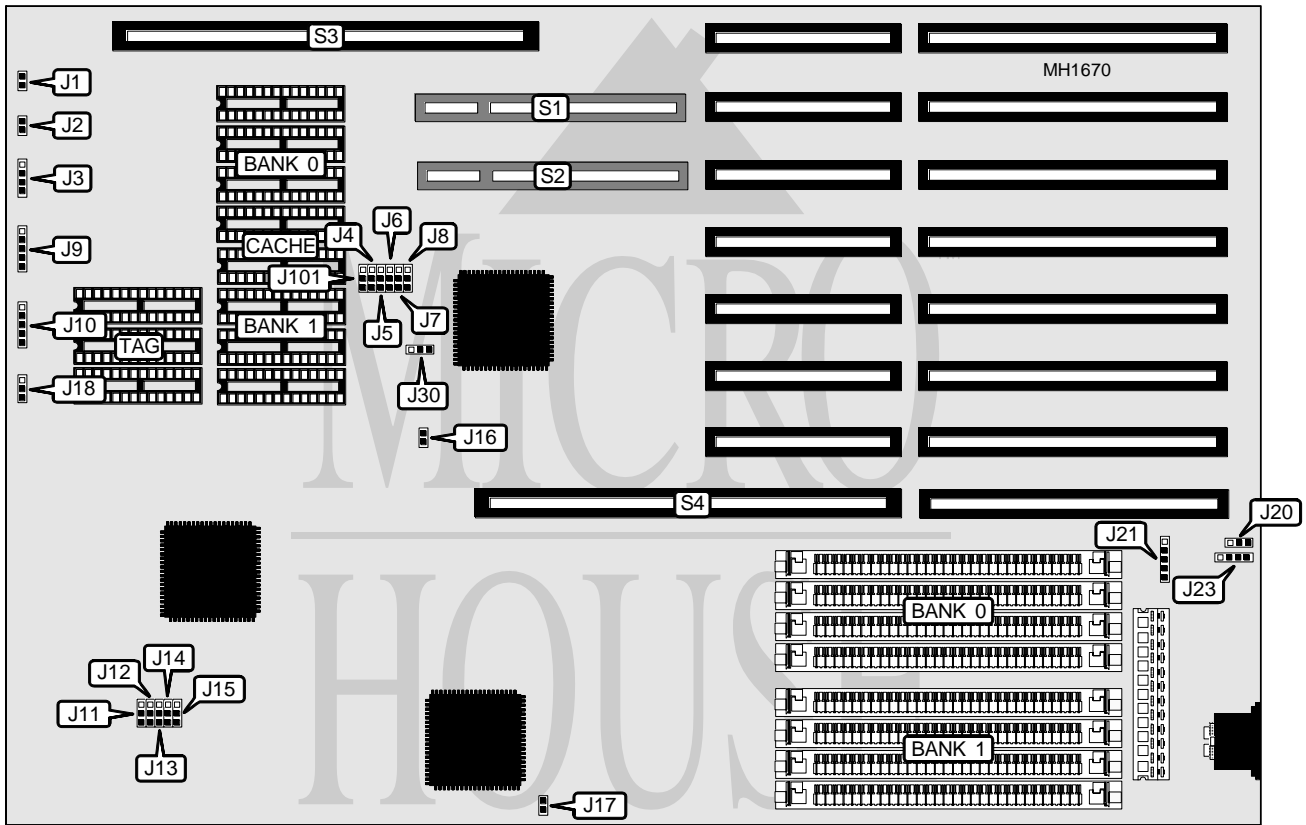


# DIAMOND FLOWER, INC.

## IB3486-UCD

<b>Processor</b>	80386DX/80486SX/80487SX/80486DX/80486DX2
<b>Processor Speed</b>	20/25/33/50(Internal)/50/66(Internal)MHz (depending on CPU card)
<b>Chip Set</b>	UMC
<b>Max. Onboard DRAM</b>	32MB
<b>Cache</b>	32/64/128/256KB
<b>BIOS</b>	AMI
<b>Dimensions</b>	330mm x 218mm
<b>I/O Options</b>	32-bit proprietary memory card, 32-bit VESA slots (2), CPU card slot
<b>NPU Options</b>	80387DX/3167/4167 (depending on CPU card)



CONNECTIONS			
Purpose	Location	Purpose	Location
Reset switch	J1	PS/2 mouse connector	J21
Turbo LED	J2	External battery	J23
Speaker	J3	32-bit VESA slots (2)	S1 & S2
Power LED & keylock	J9	CPU card slot	S3
Keyboard connector	J10	32-bit proprietary memory card	S4
Turbo switch	J18		
Note: Use only one of the keyboard connectors			

Continued on next page . . .

**DIAMOND FLOWER, INC.**  
**IB3486 - UCD**

... continued from previous page

USER CONFIGURABLE SETTINGS		
Function	Jumper	Position
í Factory configured - do not alter	J16	N/A
í Monitor type select color	J17	Closed
Monitor type select monochrome	J17	Open
í Battery select internal	J20	pins 1 & 2 closed
Battery select external	J20	pins 2 & 3 closed
í Factory configured - do not alter	J21	N/A
í Factory configured - do not alter	J30	N/A
í Display mode select normal	J101	pins 2 & 3 closed
Display mode select VESA local bus	J101	pins 1 & 2 closed

DRAM CONFIGURATION		
Size	Bank 0	Bank 1
1MB	(4) 256K x 9	NONE
2MB	(4) 256K x 9	(4) 256K x 9
4MB	(4) 1M x 9	NONE
5MB	(4) 256K x 9	(4) 1M x 9
8MB	(4) 1M x 9	(4) 1M x 9
16MB	(4) 4M x 9	NONE
20MB	(4) 1M x 9	(4) 4M x 9
32MB	(4) 4M x 9	(4) 4M x 9

32-BIT MEMORY CARD CONFIGURATION					
Memory card	J11	J12	J13	J14	J15
í Disabled	pins 2 & 3	pins 2 & 3	pins 2 & 3	pins 2 & 3	pins 2 & 3
Enabled	pins 1 & 2	pins 1 & 2	pins 1 & 2	pins 1 & 2	pins 1 & 2

Note: Pins designated should be in the closed position.

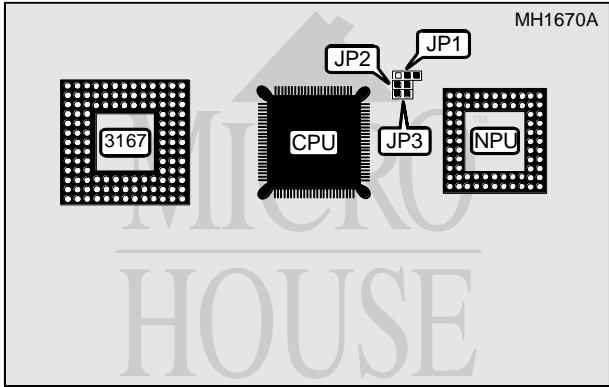
CACHE CONFIGURATION			
Size	Bank 0	Bank 1	TAG
32KB	(4) 8K x 8	NONE	(3) 16K x 4
64KB	(4) 8K x 8	(4) 8K x 8	(3) 16K x 4
128KB	(4) 32K x 8	NONE	(3) 16K x 4
256KB	(4) 32K x 8	(4) 32K x 8	(3) 16K x 4

CACHE JUMPER CONFIGURATION					
Size	J4	J5	J6	J7	J8
32KB	Open	pins 2 & 3	pins 1 & 2	pins 1 & 2	pins 1 & 2
64KB	Open	pins 1 & 2	pins 2 & 3	pins 1 & 2	pins 1 & 2
128KB	pins 1 & 2	pins 2 & 3	pins 2 & 3	pins 2 & 3	pins 1 & 2
256KB	pins 2 & 3	pins 1 & 2	pins 2 & 3	pins 2 & 3	pins 2 & 3

Continued on next page ...

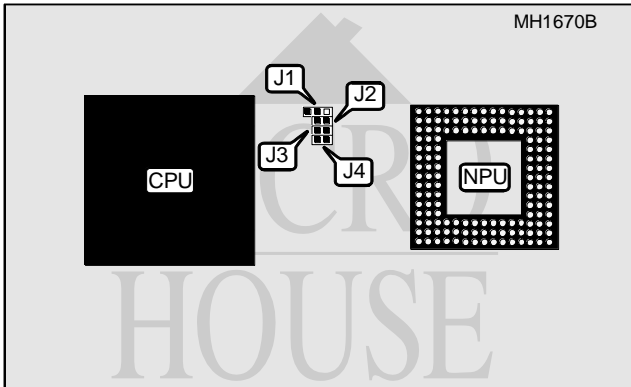
DIAMOND FLOWER, INC.  
IB3486-UCD

... continued from previous page



DBI-386DX CPU Module

NPU CONFIGURATION			
NPU	JP1	JP2	JP3
Disabled	pins 2 & 3 closed	Open	Open
Enabled	pins 1 & 2 closed	Closed	Closed



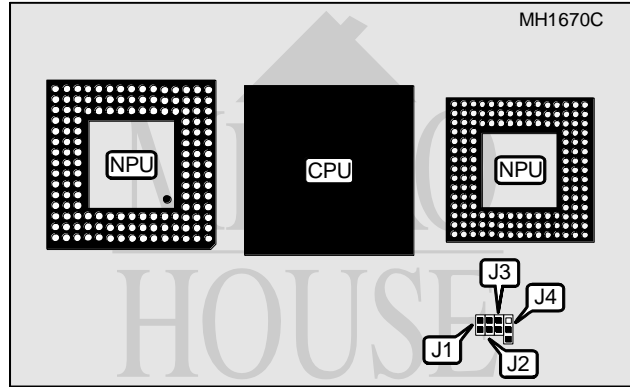
DB-486SX/DX/DX2 CPU Module

CPU TYPE CONFIGURATION				
Type	J1	J2	J3	J4
80486SX	pins 1 & 2 closed	Open	Open	Open
80486DX	pins 2 & 3 closed	Closed	Closed	Open
80486DX2	pins 2 & 3 closed	Closed	Closed	Open

Continued on next page...

DIAMOND FLOWER, INC.  
IB3486-UCD

... continued from previous page



DB-486SX/DX/DX2 CPU Module (version 1)

CPU TYPE CONFIGURATION				
Type	J1	J2	J3	J4
80486SX	Open	Open	Open	pins 1 & 2 closed
80486DX	Open	Closed	Closed	pins 2 & 3 closed
80486DX2	Open	Closed	Closed	pins 2 & 3 closed