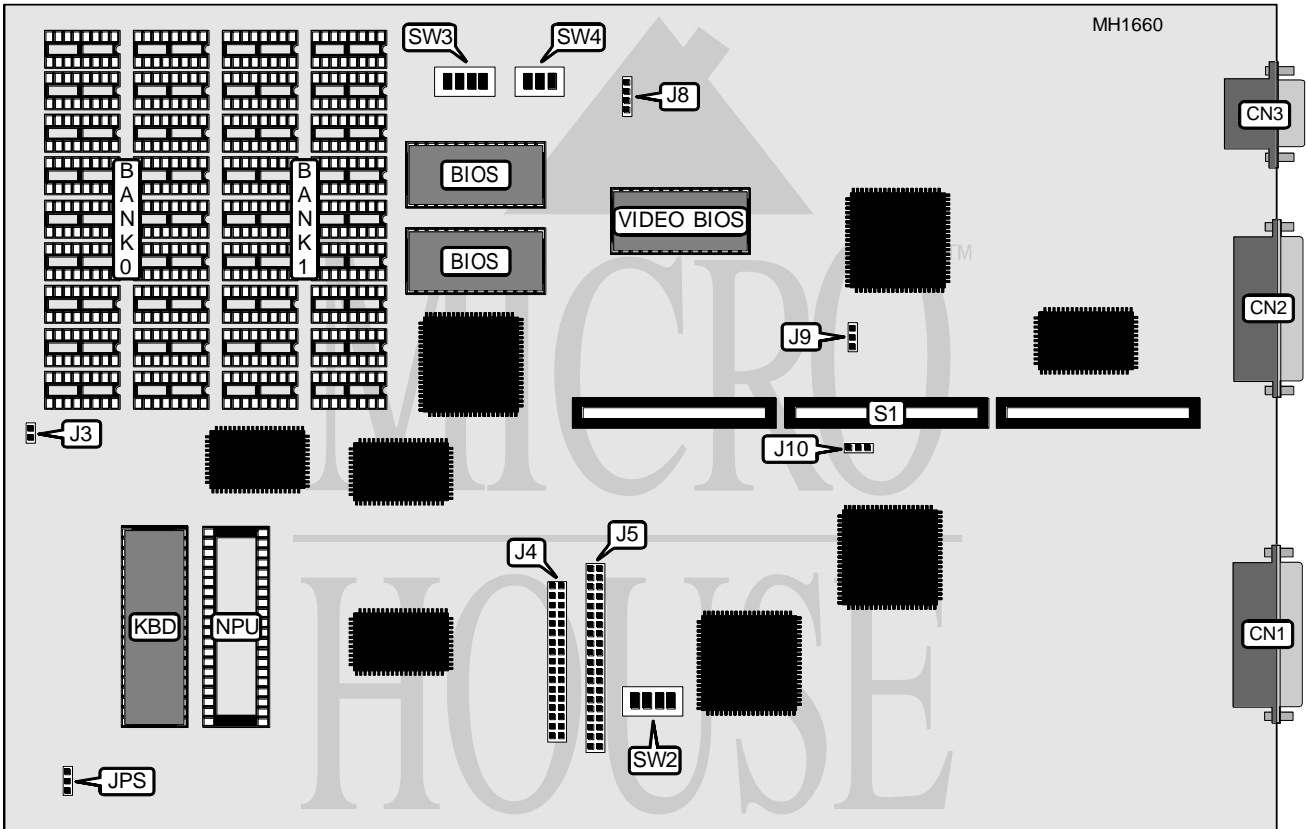


# NEC TECHNOLOGIES, INC.

## POWERMATE 286

**Processor** 80286  
**Processor Speed** 8/10MHz  
**Chip Set** NEC  
**Max. onboard DRAM** 1MB  
**Cache** None  
**BIOS** Phoenix  
**Dimensions** 330mm x 218mm  
**I/O Options** Floppy drive interface, IDE interface, parallel port, riser card slot, serial port, video  
**NPU Options** 80287



CONNECTIONS			
Purpose	Location	Purpose	Location
Serial port	CN1	IDE interface	J5
Parallel port	CN2	External battery	J10
Video port	CN3	Riser card slot	S1
Floppy drive interface	J4		

Continued on next page . . .

# NEC TECHNOLOGIES, INC.

## POWERMATE 286

... continued from previous page

USER CONFIGURABLE SETTINGS		
Function	Jumper/Switch	Position
í External video select color	J3	Closed
External video select monochrome	J3	Open
í Factory configured - do not alter	J8	N/A
í Enable printer with EGA disabled	J9	pins 1 & 2 closed
Disable printer with EGA disabled-	J9	pins 2 & 3 closed
í CPU speed select 8/10MHz switchable via SYSCLK	JPS	pins 1 & 2 closed
CPU speed select true 10MHz	JPS	pins 2 & 3 closed
í Factory configured - do not alter	SW1/1	N/A
í Floppy drive interface enabled	SW1/2	On
Floppy drive interface disabled	SW1/2	Off
í IDE interface enabled	SW1/3	Off
IDE interface disabled	SW1/3	On
í Serial port enabled	SW1/4	On
Serial port disabled	SW1/4	Off

DRAM CONFIGURATION						
Base	Extended	Bank 0	Bank 1	SW1/1	SW1/2	SW1/3
512KB	0KB	(18) 41256	NONE	On	On	On
640KB	0KB	(18) 4164	(18) 41256	Off	On	On
512KB	512KB	(18) 41256	(18) 41256	On	Off	On
640KB	384KB	(18) 41256	(18) 41256	Off	Off	On

EPROM CONFIGURATION				
EPROM	SW1/1	SW1/2	SW1/3	SW1/4
27128	On	Off	Off	On
27256	On	Off	On	Off
27512	Off	On	On	Off

VIDEO CONFIGURATION								
Type	SW3/1	SW3/2	SW3/3	SW3/4	SW3/5	SW3/6	SW3/7	SW3/8
EGA	Off	On	On	Off	Off	On	On	On
Color	Off	Off	Off	On	Off	On	On	On
Monochrome	Off	Off	On	Off	Off	On	On	On