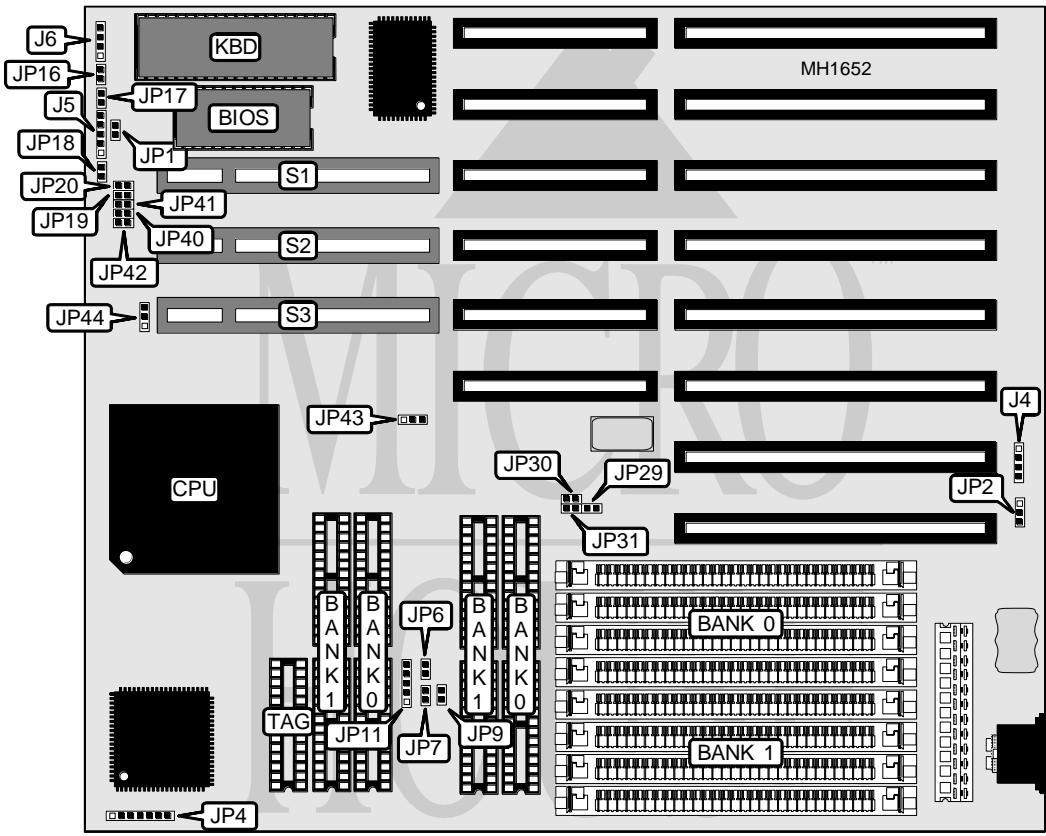


# TARGET MICRO TYPHOON 486 VESA

<b>Processor</b>	80486SX/80487SX/80486DX/80486DX2
<b>Processor Speed</b>	20/25/33/50 (Internal)/50/66 (Internal)
<b>Chip Set</b>	Unichip
<b>Max. onboard DRAM</b>	128MB
<b>Cache</b>	32/64/128/256KB
<b>BIOS</b>	AMI
<b>Dimensions</b>	260mm x 220mm
<b>I/O Options</b>	32-bit VESA local bus slots (3)
<b>NPU Options</b>	None



CONNECTIONS			
Purpose	Location	Purpose	Location
External battery	J4	Turbo switch	JP17
Power LED & keylock	J5	Reset switch	JP18
Speaker	J6	32-bit VESA local bus slots	S1, S2, & S3
Turbo LED	JP16		

Continued on next page . . .

# TARGET MICRO

## TYPHOON 486 VESA

... continued from previous page

USER CONFIGURABLE SETTINGS		
Function	Jumper	Position
í Monitor type select color	JP1	Open
Monitor type select monochrome	JP1	Closed
í CMOS memory normal operation	JP2	pins 1 & 2 closed
CMOS memory clear	JP2	pins 2 & 3 closed

DRAM CONFIGURATION		
Size	Bank 0	Bank 1
1MB	(4) 256K x 9	NONE
2MB	(4) 256K x 9	(4) 256K x 9
4MB	(4) 1M x 9	NONE
5MB	(4) 256K x 9	(4) 1M x 9
8MB	(4) 1M x 9	(4) 1M x 9
16MB	(4) 4M x 9	NONE
20MB	(4) 4M x 9	(4) 1M x 9
32MB	(4) 4M x 9	(4) 4M x 9
64MB	(4) 16M x 9	NONE
80MB	(4) 16M x 9	(4) 4M x 9
128MB	(4) 16M x 9	(4) 16M x 9

CACHE CONFIGURATION			
Size	Bank 0	Bank 1	TAG
32KB	(4) 8K x 8	NONE	8K x 8
64KB	(4) 8K x 8	(4) 8K x 8	8K x 8
128KB	(4) 32K x 8	NONE	8K x 8
256KB	(4) 32K x 8	(4) 32K x 8	32K x 8

CACHE JUMPER CONFIGURATION				
Size	JP6	JP7	JP9	JP11
32KB	Open	Open	Open	pins 2 & 3
64KB	Open	Closed	Open	pins 1 & 2
128KB	Open	Closed	Closed	pins 1 & 2, 3 & 4
256KB	Closed	Closed	Closed	pins 1 & 2, 4 & 5

Note: Pins designated should be in the closed position.

VESA LOCAL BUS SELECT			
Mode	JP40	JP41	JP42
VL-Bus Master	Open	Open	Open
VL-Bus Slave	Closed	Closed	Closed

VESA CLOCK CONFIGURATION	
Mode	JP43
Adjusted VL-BUS clock	pins 1 & 2 closed
Normal VL-BUS clock	pins 2 & 3 closed

Continued on next page ...

# TARGET MICRO

## TYPHOON 486 VESA

... continued from previous page

VESA BUS SPEED (ID3) CONFIGURATION		
CPU speed	JP19 (ID3)	JP44
≤33MHz	Open	pins 2 & 3 closed
> 33MHz	Closed	pins 1 & 2 closed

VESA ID4 CONFIGURATION	
Setting	JP20 (ID4)
Reserved for future use	Closed

CPU SPEED CONFIGURATION			
Speed	JP29	JP30	JP31
20MHz	Open	Closed	Closed
25MHz	Closed	Open	Closed
33MHz	Closed	Closed	Open
50i MHz	Closed	Open	Closed
50MHz	Open	Closed	Open
66i MHz	Closed	Closed	Open

CPU TYPE CONFIGURATION	
Type	JP4
80486SX	5 & 6 closed
80487SX	pins 2 & 3, 4 & 5, 6 & 7 closed
80486DX	pins 1 & 2, 4 & 5, 6 & 7 closed
80486DX2	pins 1 & 2, 4 & 5, 6 & 7 closed