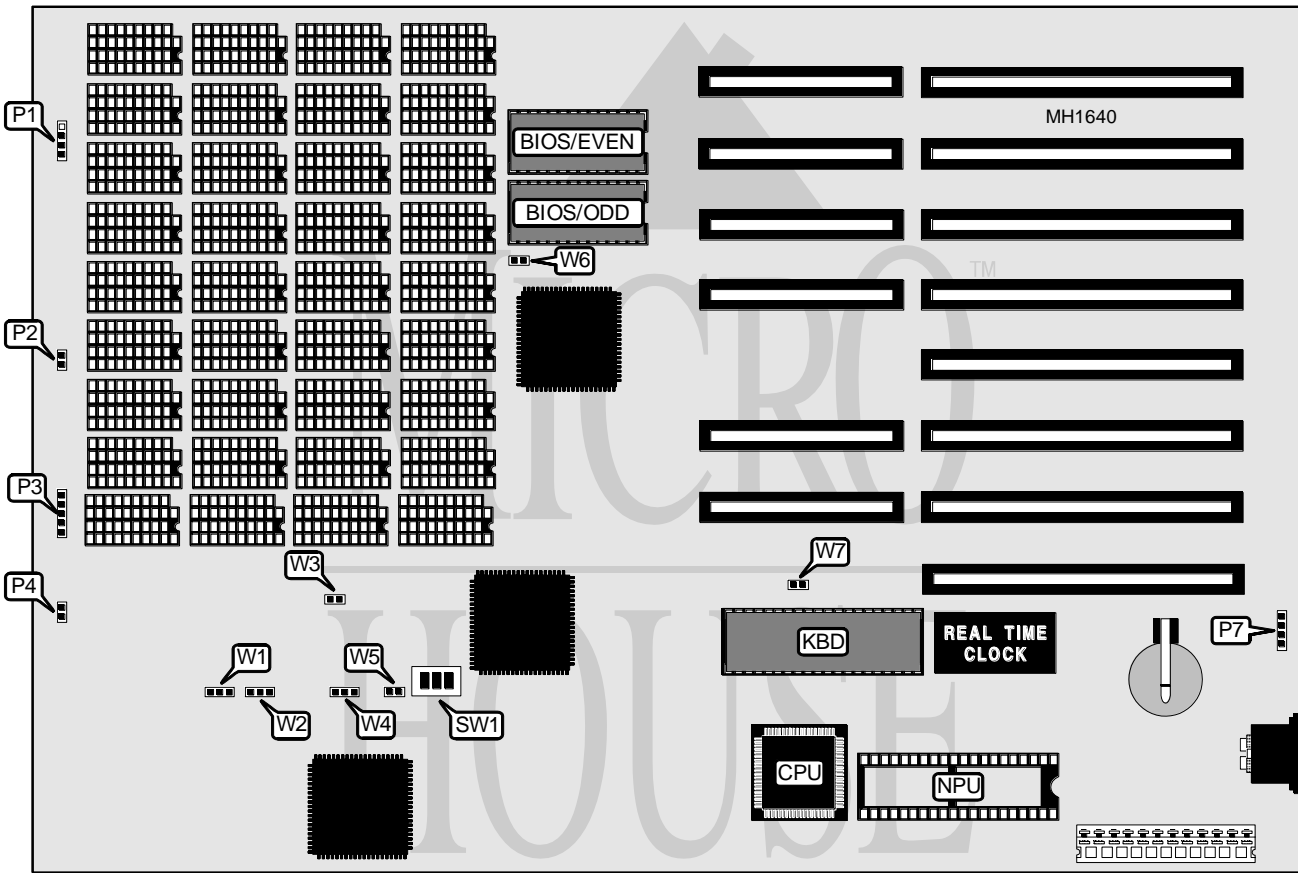


UNIDENTIFIED

VHP - 1200

Processor 80286
Processor Speed 12MHz
Chip Set G-2
Max. onboard DRAM 4MB
Cache None
BIOS Unknown
Dimensions 330mm x 218mm
I/O Options None
NPU Options 80287



CONNECTIONS			
Purpose	Location	Purpose	Location
Speaker	P1	Turbo LED	P4
Reset switch	P2	External battery	P7
Power LED & keylock	P3	Turbo Switch	W5

Continued on next page . . .

UNIDENTIFIED

MBVLSI-168 B

... continued from previous page

USER CONFIGURABLE SETTINGS		
Function	Jumper/Switch	Position
í I/O half speed enabled	SW1/switch 1	Off
I/O half speed disabled	SW1/switch 1	On
í Wait state select 0 wait states	JP10	Closed
í Wait state select 1 wait state	JP10	Open
í BIOS type select 27256	JP11	pins 1 & 2 closed
BIOS type select 27128	JP11	pins 2 & 3 closed
í Monitor type select color	JP12	pins 1 & 2 closed
Monitor type select monochrome	JP12	pins 2 & 3 closed
í Power good detect - do not alter	JP16	N/A

DRAM CONFIGURATION							
Size	Bank 0	Parity 0	Bank 1	Parity 2	JP7	JP8	JP9
512KB	(4) 44256	(2) 41256	NONE	NONE	Closed	Closed	Closed
640KB	(4) 44256	(2) 41256	(4) 4464	(2) 4164	Closed	Closed	Open
640KB	(4) 44256	(2) 41256	(16) 4164	(2) 4164	Closed	Closed	Open
1MB	(4) 44256	(2) 41256	(4) 44256	(2) 4164	Closed	Open	Closed
1MB	(4) 44256	(2) 41256	(16) 4164	(2) 4164	Closed	Open	Closed
2MB	(18) 411000	NONE	NONE	NONE	Closed	Open	Open
4MB	(18) 411000	NONE	(18) 411000	NONE	Open	Closed	Closed

KEYBOARD CONTROLLER CONFIGURATION				
Pin Number	JP13	JP14	JP15	JP18
23	Open	Closed	Open	Open
27	Open	Open	Closed	Open
30	Closed	Open	Open	Open
32	Open	Open	Open	Closed

Note: Make sure that the BIOS and the keyboard controller are compatible before shorting a controller pin for speed change via software.