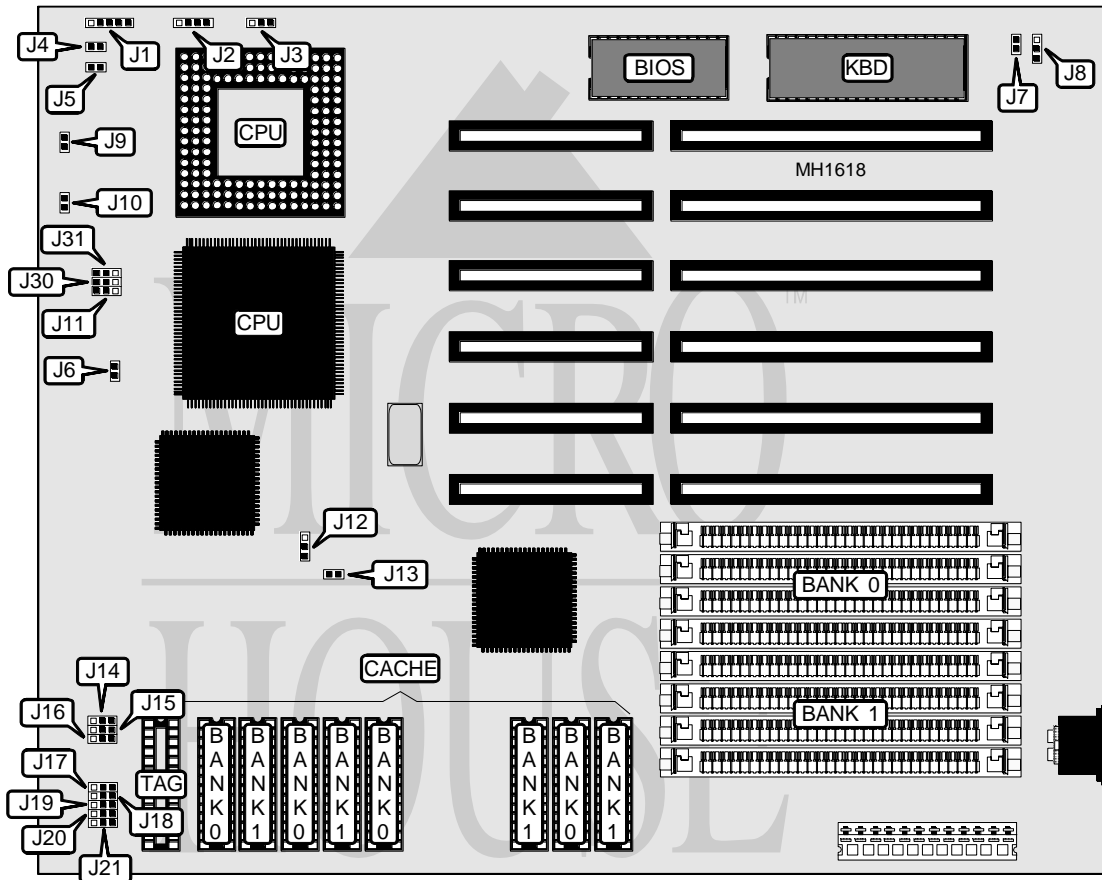


DTK COMPUTER, INC.

PKM-0037Y (VER. 1.01)

Processor	80486SX/80487SX/80486DX/ODP486SX/80486DX2
Processor Speed	20/25/33/50 (Internal)/50/66 (Internal)MHz
Chip Set	Symphony
Max. onboard DRAM	32MB
Cache	64/128/256KB
BIOS	AMI/DTK
Dimensions	229mm x 221mm
I/O Options	None
NPU Options	None



CONNECTIONS			
Purpose	Location	Purpose	Location
Power LED & keylock	J1	Reset switch	J4
Speaker	J2	Turbo LED	J5
Turbo LED	J3		

Continued on next page . . .

DTK COMPUTER, INC.
PKM-0037Y (VER. 1.01)

... continued from previous page

USER CONFIGURABLE SETTINGS		
Function	Jumper/Switch	Position
í Monitor type select monochrome	J8	pins 1 & 2 closed
Monitor type select color	J8	pins 2 & 3 closed
í Cache write wait state select 0 wait states	J9	Closed
Cache write wait state select 1 wait state	J9	Open

DRAM CONFIGURATION		
Size	Bank 0	Bank 1
1MB	(4) 256K x 9	NONE
2MB	(4) 256K x 9	(4) 256K x 9
4MB	(4) 1M x 9	NONE
5MB	(4) 256K x 9	(4) 1M x 9
8MB	(4) 1M x 9	(4) 1M x 9
16MB	(4) 4M x 9	NONE
17MB	(4) 256K x 9	(4) 4M x 9
20MB	(4) 1M x 9	(4) 4M x 9
32MB	(4) 4M x 9	(4) 4M x 9

CACHE CONFIGURATION			
Size	Bank 0	Bank 1	TAG
64KB	(4) 8K x 8	(4) 8K x 8	(1) 8K x 8
128KB	(4) 32K x 8	NONE	(1) 32K x 8
256KB	(4) 32K x 8	(4) 32K x 8	(1) 32K x 8

CACHE JUMPER CONFIGURATION								
Size	J14	J15	J16	J17	J18	J19	J20	J21
64KB	1 & 2	1 & 2	1 & 2	1 & 2	1 & 2	1 & 2	1 & 2	1 & 2
128KB	2 & 3	1 & 2	1 & 2	2 & 3	2 & 3	2 & 3	2 & 3	2 & 3
256KB	2 & 3	2 & 3	2 & 3	1 & 2	1 & 2	1 & 2	1 & 2	1 & 2

Note: Pins designated should be in the closed position.

Continued on next page . . .

DTK COMPUTER, INC.
PKM-0037Y (VER. 1.01)

... continued from previous page

CPU SPEED CONFIGURATION				
Speed	J7	J10	J12	J13
20MHz	Open	Open	pins 1 & 2 closed	Open
25Mhz	Open	Open	pins 1 & 2 closed	Open
33Mhz	Open	Open	pins 1 & 2 closed	Open
50i MHz	Closed	Open	pins 1 & 2 closed	Open
50MHz	Closed	Closed	pins 2 & 3 closed	Closed
66i MHz	Open	Open	pins 1 & 2 closed	Open

CPU TYPE CONFIGURATION				
Type	J6	J11	J30	J31
80486SX PGA	Closed	Open	pins 2 & 3 closed	Open
80486SX PQFP	Open	Open	pins 1 & 2 closed	Open
80487SX PGA	Closed	pins 2 & 3 closed	pins 1 & 2 closed	pins 2 & 3 closed
80486DX PGA	Closed	pins 1 & 2 closed	pins 1 & 2 closed	pins 1 & 2 closed
ODP486SX PGA	Closed	pins 1 & 2 closed	pins 1 & 2 closed	pins 1 & 2 closed
80486DX2 PGA	Closed	pins 1 & 2 closed	pins 1 & 2 closed	pins 1 & 2 closed