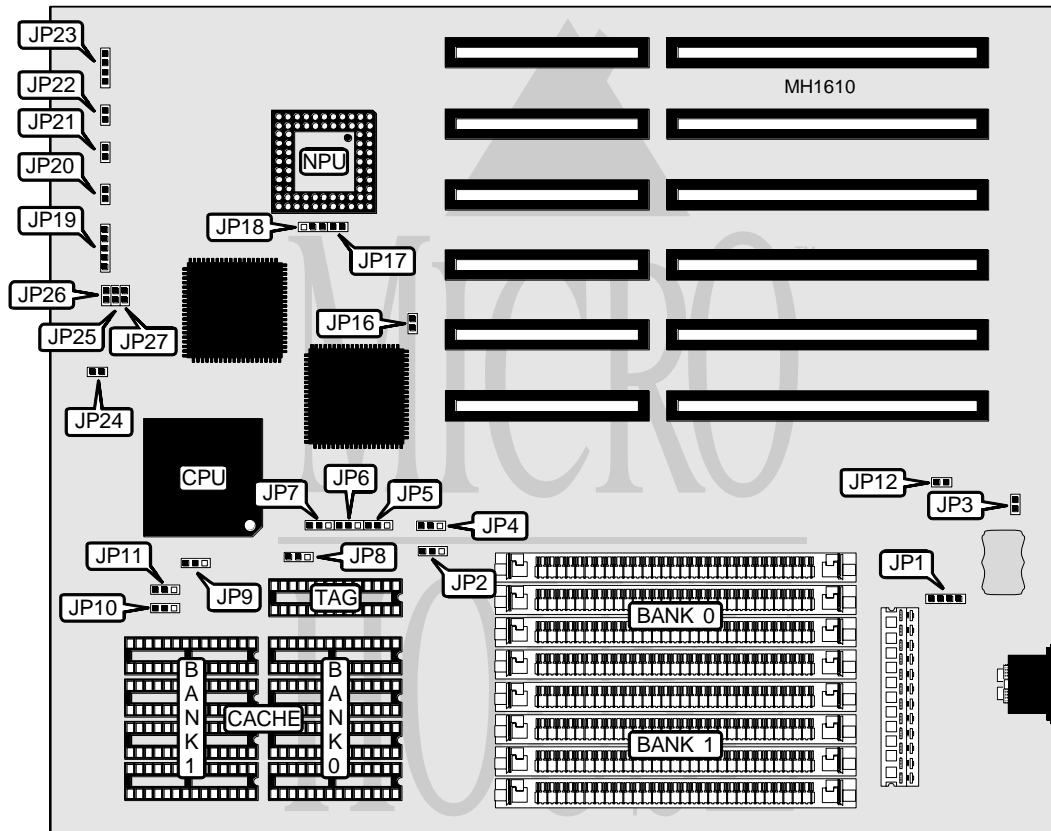


CHICONY, INC.

CH-386-33/40H(L), CH-486DLC-33/40H(L)

Processor	80386DX/CX486DLC
Processor Speed	33/40MHz
Chip Set	UMC
Max. onboard DRAM	32MB
Cache	32/64/128/256KB
BIOS	AMI
Dimensions	330mm x 218mm
I/O Options	None
NPU Options	80387DX/CX487DLC/3167



CONNECTIONS			
Purpose	Location	Purpose	Location
External battery	JP1	Reset switch	JP21
Power LED & keylock	JP19	Turbo switch	JP22
Turbo LED	JP20	Speaker	JP23

Continued on next page . . .

CHICONY, INC.

CH-386-33/40H(L), CH-486DLC-33/40H(L)

. continued from previous page.

USER CONFIGURABLE SETTINGS		
Function	Jumper	Position
í CMOS memory normal operation	JP3	Open
CMOS memory clear	JP3	Closed
í Monitor type select color	JP12	Closed
Monitor type select monochrome	JP12	Open
í CPU speed select 33MHz	JP24	Closed
CPU speed select 40MHz	JP24	Open

CLOCK GENERATOR CONFIGURATION			
Generator	JP25	JP26	JP27
AV9107	Open	Open	Open
Oscillator	Closed	Closed	Closed

DRAM CONFIGURATION		
Size	Bank 0	Bank 1
1MB	(4) 256K x 9	NONE
2MB	(4) 256K x 9	(4) 256K x 9
4MB	(4) 1M x 9	NONE
5MB	(4) 256K x 9	(4) 1M x 9
8MB	(4) 1M x 9	(4) 1M x 9
16MB	(4) 4M x 9	NONE
20MB	(4) 1M x 9	(4) 4M x 9
32MB	(4) 4M x 9	(4) 4M x 9

CACHE CONFIGURATION				
Size	Max Cachable	Bank 0	Bank 1	TAG
32KB	8MB	(4) 8K x 8	NONE	8K x 8
64KB	16MB	(4) 8K x 8	(4) 8K x 8	8K x 8
128KB	32MB	(4) 32K x 8	NONE	8K x 8
256KB	32MB	(4) 32K x 8	(4) 32K x 8	32K x 8

CACHE JUMPER CONFIGURATION								
Size	JP2	JP4	JP5	JP6	JP7	JP8	JP10	JP11
32KB	1 & 2	1 & 2	1 & 2	1 & 2	1 & 2	1 & 2	Open	2 & 3
64KB	1 & 2	2 & 3	1 & 2	2 & 3	1 & 2	1 & 2	Open	1 & 2
128KB	2 & 3	2 & 3	1 & 2	2 & 3	2 & 3	1 & 2	1 & 2	2 & 3
256KB	2 & 3	2 & 3	2 & 3	2 & 3	2 & 3	2 & 3	2 & 3	1 & 2

Note: Pins designated should be in the closed position.

NPU CONFIGURATION				
Mode	JP9	JP16	JP17	JP18
Synchronous	Closed	Closed	Open	pins 1 & 2 closed
Asynchronous	Closed	Closed	Closed	pins 2 & 3 closed
Disabled	Open	Open	N/A	N/A