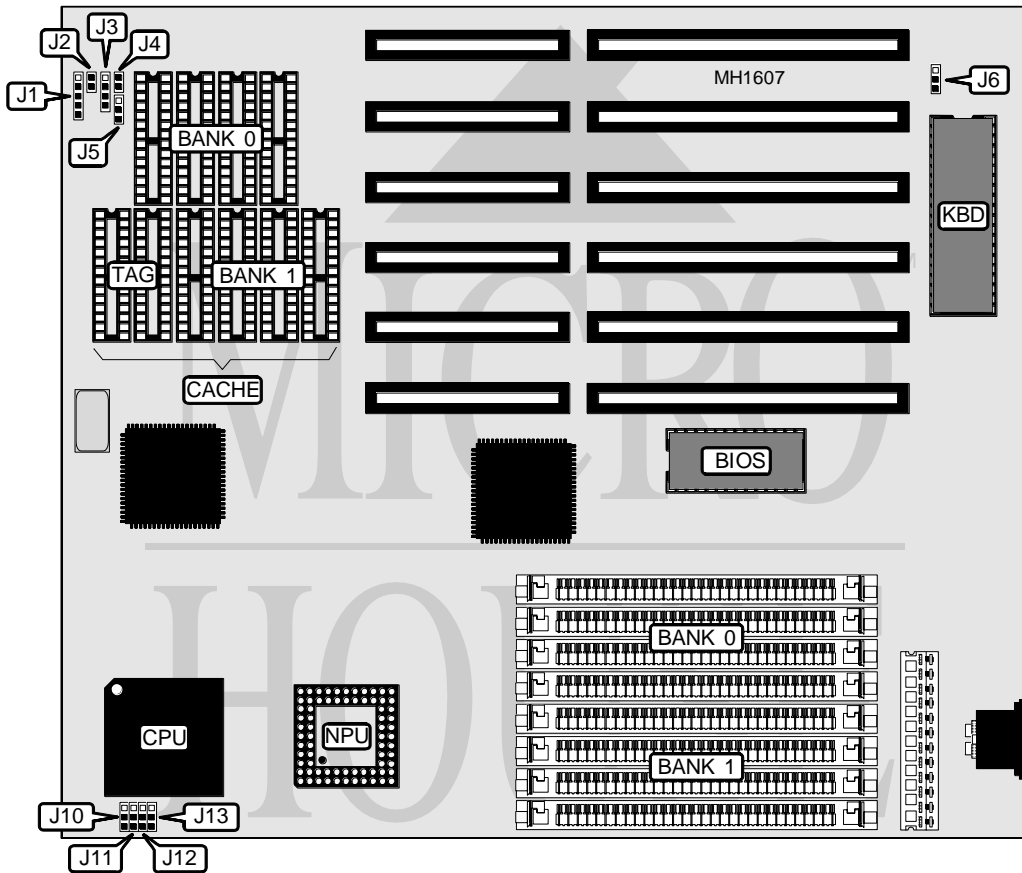


# DTK COMPUTER, INC.

## PEM-0036Y(S)

**Processor** 80386DX  
**Processor Speed** 25/33/40MHz  
**Chip Set** Symphony  
**Max. onboard DRAM** 32MB  
**Cache** None  
**BIOS** AMI/DTK  
**Dimensions** 220mm x 218mm  
**I/O Options** None  
**NPU Options** 80387DX



CONNECTIONS			
Purpose	Location	Purpose	Location
Power LED & keylock	J1	Speaker	J3
Turbo LED	J2	Reset switch	J4

Continued on next page . . .

**DTK COMPUTER, INC.**  
**P E M - 0 0 3 6 Y ( S )**

... continued from previous page

USER CONFIGURABLE SETTINGS		
Function	Jumper/Switch	Position
í CPU speed normal	J5	pins 1 & 2 closed
CPU speed High	J5	pins 2 & 3 closed
í Monitor type select monochrome	J6	pins 1 & 2 closed
Monitor type select color	J6	pins 2 & 3 closed

Note: Turbo speed can also be activated by pressing Ctrl, Alt, and - simultaneously.

DRAM CONFIGURATION		
Size	Bank 0	Bank 1
1MB	(4) 256K x 9	NONE
2MB	(4) 256K x 9	(4) 256K x 9
4MB	(4) 1M x 9	NONE
5MB	(4) 256K x 9	(4) 1M x 9
8MB	(4) 1M x 9	(4) 1M x 9
16MB	(4) 4M x 9	NONE
17MB	(4) 256K x 9	(4) 4M x 9
20MB	(4) 1M x 9	(4) 4M x 9
32MB	(4) 4M x 9	(4) 4M x 9

CACHE CONFIGURATION			
Size	Bank 0	Bank 1	TAG
64KB	(4) 8K x 8	(4) 8K x 8	(2) 8K x 8
128KB	(4) 32K x 8	NONE	(2) 32K x 8
256KB	(4) 32K x 8	(4) 32K x 8	(2) 32K x 8

CACHE JUMPER CONFIGURATION				
Size	J10	J11	J12	J13
64KB	pins 2 & 3 closed	pins 1 & 2 closed	pins 1 & 2 closed	pins 1 & 2 closed
128KB	pins 2 & 3 closed	pins 2 & 3 closed	pins 1 & 2 closed	pins 2 & 3 closed
256KB	pins 2 & 3 closed	pins 2 & 3 closed	pins 2 & 3 closed	pins 1 & 2 closed