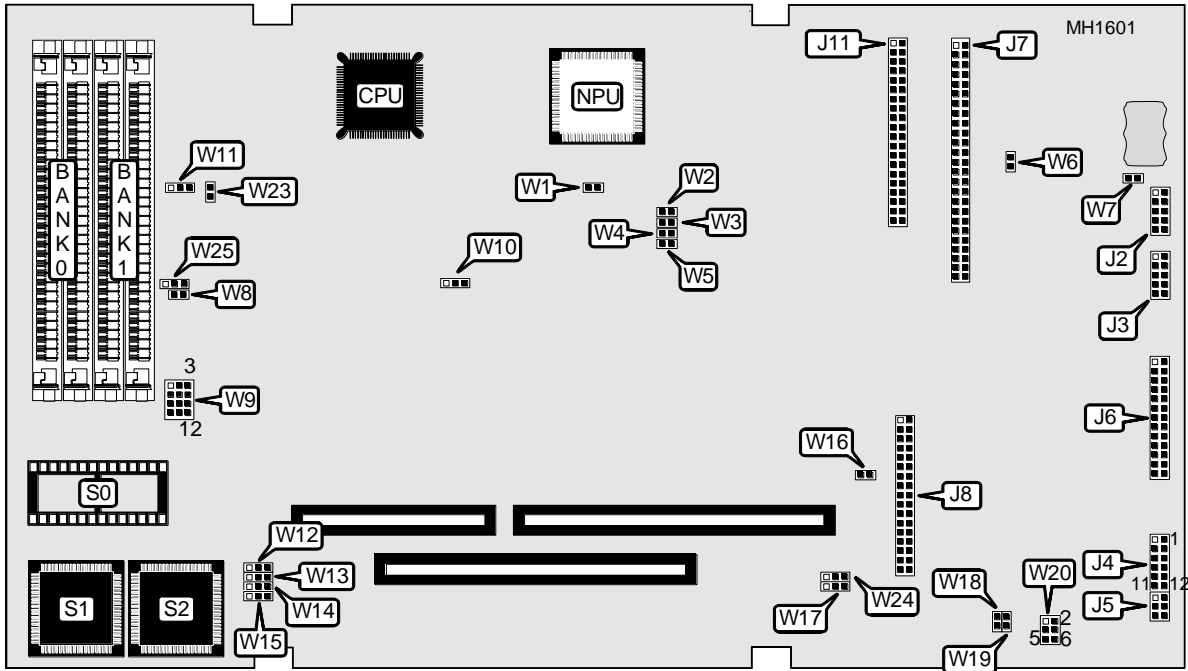


AMPRO COMPUTERS, INC. LITTLE BOARD/386SX

Processor 80386SX
Processor Speed 25MHz
Chip Set Ampro
Max. onboard DRAM 16MB
Cache None
BIOS Award
Dimensions 330mm x 218mm
I/O Options Floppy drive interface, IDE interface, parallel port, SCSI connector, serial ports (2)
NPU Options 80387SX



CONNECTIONS			
Purpose	Location	Purpose	Location
Power connector	J1	SCSI interface	J7
Serial port (COM2)	J2	Floppy drive interface	J8
Serial port (COM1)	J3	IDE interface	J11
Keyboard	J5	Power J1-1 to +12V BUS	W7
Parallel port	J6		

Continued on next page . . .

AMPRO COMPUTERS, INC.
LITTLE BOARD/386SX

... continued from previous page

USER CONFIGURABLE SETTINGS		
Function	Jumper/Switch	Position
í SCSI controller enabled	W1	Closed
SCSI controller disabled	W1	Open
í SCSI controller select IRQ3	W2 & W3	Closed
SCSI controller select none	W2 & W3	Open
í Factory configured - do not alter	W4	Open
í Factory configured - do not alter	W5	Open
í SCSI termination power enabled	W6	Closed
SCSI termination power none	W6	Open
í Floppy clock select 16MHz	W10	Closed
Floppy clock select none	W10	Open
í Flash EPROM programming power +12V to Byte-wide	W16	Open
Flash EPROM programming power disabled	W16	Closed
í Watchdog timer output selection	W17	Open
Watchdog timer output none	W17	Closed
í Factory configured - do not alter	W18	Open
í Floppy PCVAL selection	W19	Open
Floppy PCVAL none	W19	Closed
í Factory configured - do not alter	W21	N/A
í Factory configured - do not alter	W22	N/A
í Power fail NMI enabled	W23	Open
Power fail NMI none	W23	Closed
í Parallel port interrupt option select via setup	W24	Open
Parallel port interrupt option none	W24	Closed

Continued on next page ...

AMPRO COMPUTERS, INC.

LITTLE BOARD/386SX

... continued from previous page

DRAM CONFIGURATION		
Size	Bank 0	Bank 1
512KB	(2) 256K x 9	NONE
1MB	(2) 256K x 9	(2) 256K x 9
2MB	(2) 1M x 9	(2) 256K x 9
4MB	(2) 1M x 9	(2) 1M x 9
8MB	(2) 4M x 9	NONE
10MB	(2) 1M x 9	(2) 4M x 9
16MB	(2) 4M x 9	(2) 4M x 9

EPROM CONFIGURATION (S0)			
EPROM	W8	W9	W25
27C256	Open	pins 7 & 8, 10 & 11	pins 1 & 2
27C512	Open	pins 1 & 4, 7 & 8, 10 & 11	pins 1 & 2
27C010	Open	pins 1 & 4, 2 & 5, 6 & 9, 7 & 8	pins 1 & 2
27C020	Open	pins 1 & 4, 2 & 5, 6 & 9, 7 & 8, 11 & 12	pins 1 & 2
27C040	Open	pins 1 & 4, 2 & 3, 6 & 9, 7 & 8, 11 & 12	pins 1 & 2
27C080	Closed	pins 1 & 4, 2 & 3, 7 & 8, 11 & 12	pins 1 & 2
62256	Open	pins 4 & 7, 5 & 8, 10 & 11	pins 1 & 2 or 2 & 3
628128	Open	pins 1 & 2, 4 & 7, 5 & 8, 10 & 11	pins 1 & 2 or 2 & 3
uPD434000	Open	pins 1 & 2, 3 & 6, 4 & 7, 5 & 8, 11 & 12	pins 1 & 2 or 2 & 3
28F256	Open	pins 2 & 5, 6 & 9, 7 & 8	pins 1 & 2
28F512	Open	pins 1 & 4, 2 & 5, 6 & 9, 7 & 8	pins 1 & 2
28F010	Open	pins 1 & 4, 2 & 5, 6 & 9, 7 & 8	pins 1 & 2
28F020	Open	pins 1 & 4, 2 & 5, 6 & 9, 7 & 8, 11 & 12	pins 1 & 2

Note: Pins designated should be in the closed position.

EPROM/FLASH EPROM CONFIGURATION (S1 & S2)				
EPROM	W12	W13	W14	W15
128KB	pins 2 & 3 closed	pins 2 & 3 closed	pins 2 & 3 closed	pins 2 & 3 closed
256KB	pins 2 & 3 closed	pins 2 & 3 closed	pins 2 & 3 closed	pins 2 & 3 closed