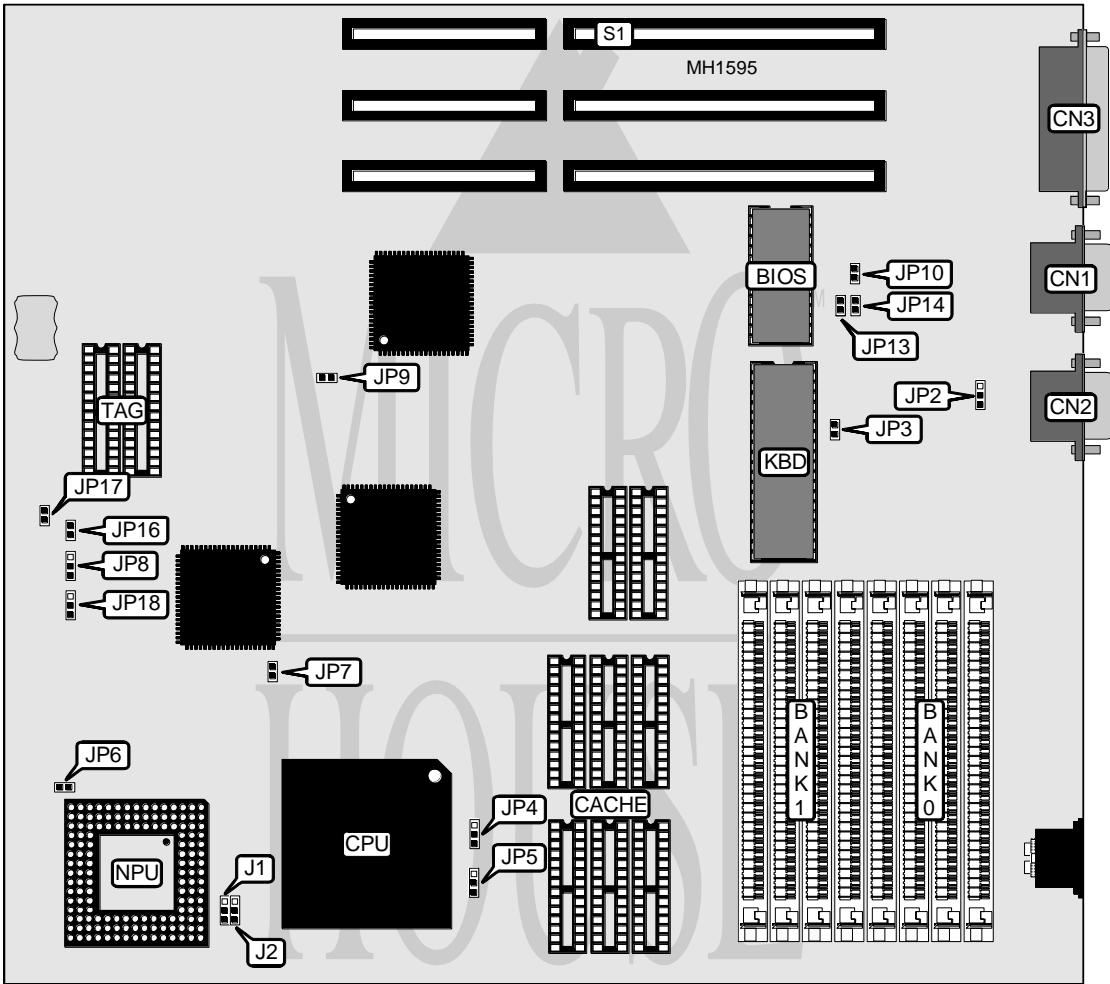


FLYTECH TECHNOLOGY (U.S.A.), INC. CARRY I 3400/3450 SERIES

Processor	80486SX/80486DX
Processor Speed	20/33MHz
Chip Set	ETEQ
Max. Onboard DRAM	32MB
Cache	64/256KB
BIOS	AMI
Dimensions	330mm x 218mm
I/O Options	Parallel port, serial ports (2), VGA card slot
NPU Options	4167



CONNECTIONS			
Purpose	Location	Purpose	Location
Serial port (COM2)	CN1	Turbo switch	JP13
Serial port (COM1)	CN2	Reset switch	JP14
Parallel port	CN3	Video card slot	S1

Continued on next page . . .

FLYTECH TECHNOLOGY (U.S.A.), INC.
CARRY I 3400/3450 SERIES

... continued from previous page

USER CONFIGURABLE SETTINGS		
Function	Jumper/Switch	Position
í Factory configured - do not alter	J1	N/A
í Factory configured - do not alter	J2	N/A
í Factory configured - do not alter	JP2	N/A
í Factory configured - do not alter	JP3	N/A
í Factory configured - do not alter	JP6	N/A
í Monitor type select color	JP7	Closed
Monitor type select monochrome	JP7	Open
í Factory configured - do not alter	JP10	N/A

DRAM CONFIGURATION		
Size	Bank 0	Bank 1
1MB	(4) 256K x 9	NONE
2MB	(4) 256K x 9	(4) 256K x 9
4MB	(4) 1M x 9	NONE
5MB	(4) 256K x 9	(4) 1M x 9
8MB	(4) 1M x 9	(4) 1M x 9
16MB	(4) 4M x 9	NONE
20MB	(4) 1M x 9	(4) 4M x 9
32MB	(4) 4M x 9	(4) 4M x 9

CACHE CONFIGURATION			
Size	Bank 0	Bank 1	TAG
64KB	(4) 8K x 8	(4) 8K x 8	(2) 16K x 4
256KB	(4) 32K x 8	(4) 32K x 8	(2) 16K x 4

CACHE JUMPER CONFIGURATION					
Size	J16	J17	J18	JP8	JP9
64KB	Open	Open	pins 2 & 3	pins 2 & 3	Open
256KB	Closed	Closed	pins 1 & 2	pins 1 & 2	Closed

CPU TYPE CONFIGURATION		
Type	JP5	JP4
80486SX (FT-3400)	pins 1 & 2 closed	pins 1 & 2 closed
80486DX (FT-3450)	pins 2 & 3 closed	pins 2 & 3 closed