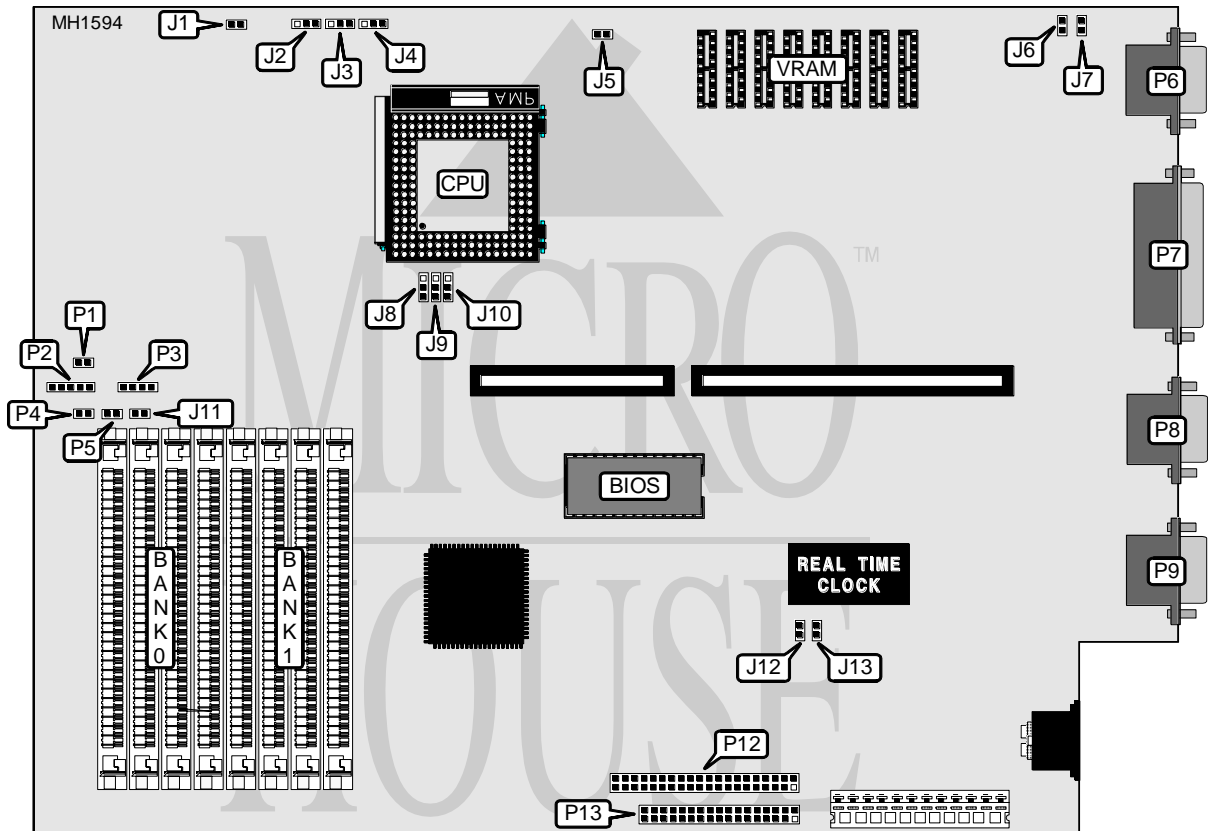


# MYLEX CORPORATION

## MSL486 SLIMLINE

**Processor** 80486SX/80487SX/80486DX/ODP486SX/80486DX2  
**Processor Speed** 16/20/25/33/50 (Internal)/66 (Internal)  
**Chip Set** Headland  
**Max. onboard DRAM** 32MB  
**Cache** None  
**BIOS** Mylex  
**Dimensions** 330mm x 218mm  
**I/O Options** Floppy drive interface, IDE interface, parallel port, serial ports (2), VGA port  
**NPU Options** None



CONNECTIONS			
Purpose	Location	Purpose	Location
Turbo LED	P1	Parallel port	P7
Power LED & keylock	P2	Serial port (COM2)	P8
Speaker	P3	Serial port (COM1)	P9
IDE interface LED	P4	IDE interface	P12
Reset switch	P5	Floppy drive interface	P13
VGA port	P6		

# MYLEX CORPORATION

## MSL486 SLIMLINE

... continued from previous page

USER CONFIGURABLE SETTINGS		
Function	Jumper/Switch	Position
í Factory configured - do not alter	J5	N/A
í Factory configured - do not alter	J11	N/A
í Parallel port select uni-directional (printer)	J12 & J13	Closed
Parallel port select bi-directional	J12 & J13	Open

DRAM CONFIGURATION		
Size	Bank 0	Bank 1
1MB	(4) 256K x 9	NONE
2MB	(4) 256K x 9	(4) 256K x 9
4MB	(4) 1M x 9	NONE
5MB	(4) 256K x 9	(4) 1M x 9
8MB	(4) 1M x 9	(4) 1M x 9
16MB	(4) 4M x 9	NONE
17MB	(4) 256K x 9	(4) 4M x 9
20MB	(4) 1M x 9	(4) 4M x 9
32MB	(4) 4M x 9	(4) 4M x 9

VRAM CONFIGURATION			
Size	VRAM (U5,U6,U9,U10)	J6	J7
512KB	None	On	Off
1MB	(4) 256K x 4	Off	On

CPU SPEED CONFIGURATION			
Size	J8	J9	J10
16MHz	pins 2 & 3 closed	pins 1 & 2 closed	pins 2 & 3 closed
20MHz	pins 1 & 2 closed	pins 1 & 2 closed	pins 2 & 3 closed
25MHz	pins 2 & 3 closed	pins 2 & 3 closed	pins 1 & 2 closed
33MHz	pins 1 & 2 closed	pins 2 & 3 closed	pins 1 & 2 closed
50i MHz	pins 2 & 3 closed	pins 2 & 3 closed	pins 1 & 2 closed
66i MHz	pins 1 & 2 closed	pins 2 & 3 closed	pins 1 & 2 closed

CPU TYPE CONFIGURATION				
CPU Type	J1	J2	J3	J4
80486SX	Open	Open	pins 2 & 3 closed	Open
80487SX	Open	pins 1 & 2 closed	pins 1 & 2 closed	pins 2 & 3 closed
80486DX	Open	pins 1 & 2 closed	pins 1 & 2 closed	pins 1 & 2 closed
ODP486SX	Open	pins 1 & 2 closed	pins 1 & 2 closed	pins 2 & 3 closed
80486DX2	Open	pins 1 & 2 closed	pins 1 & 2 closed	pins 1 & 2 closed