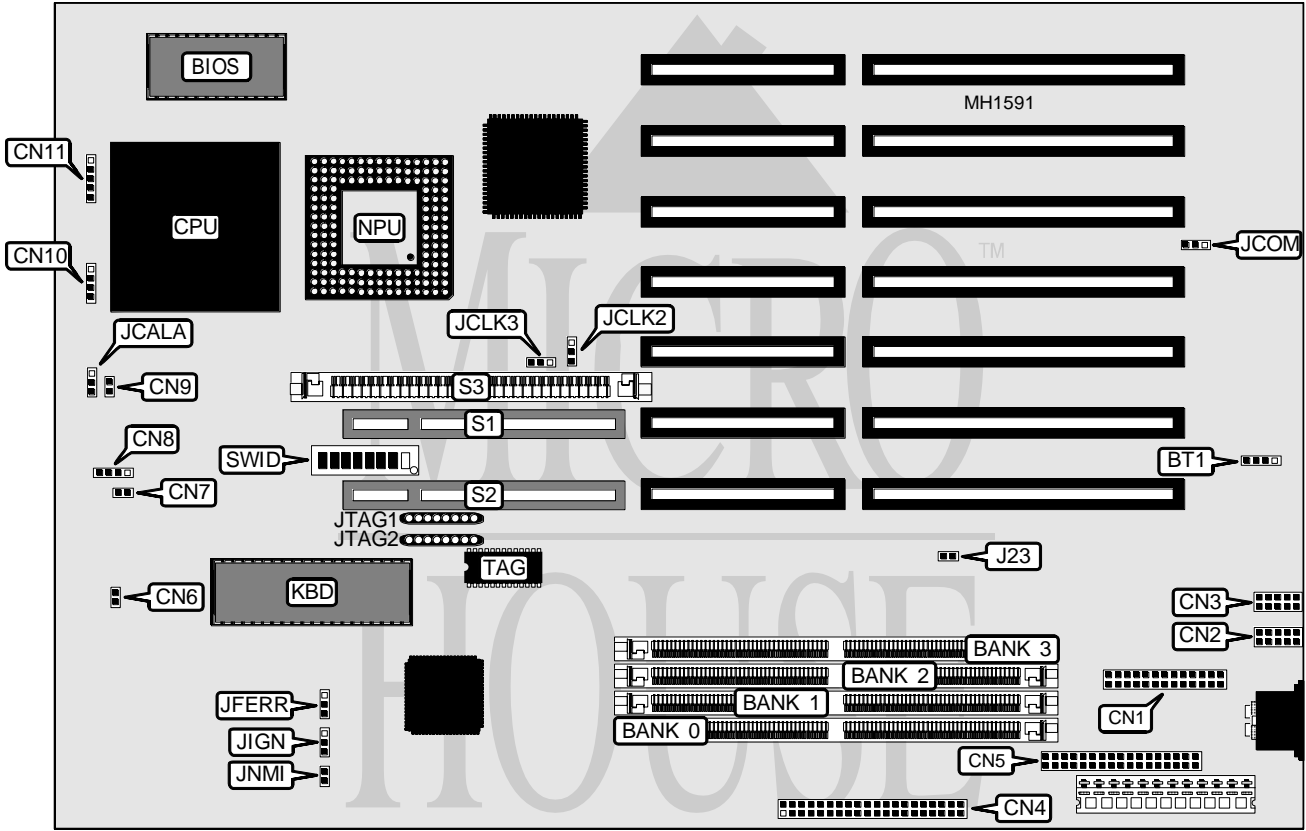


DIAMOND MULTIMEDIA SYSTEMS, INC.

FASTBUS VLB

Processor	80386DX/80486SX/80487SX/80486DX/80486DX2
Processor Speed	25/33/40/50 (internal)/50/66(internal) MHz
Chip Set	C & T
Max. onboard DRAM	128MB
Cache	64/256KB
BIOS	C & T
Dimensions	330mm x 218mm
I/O Options	32-bit VESA local bus slots (2), floppy drive interface, IDE interface, parallel port, serial ports (2)
NPU Options	4167



CONNECTIONS			
Purpose	Location	Purpose	Location
External battery	BAT1	Reset switch	CN7
Parallel port	CN1	Speaker	CN8
Serial port (COM1)	CN2	Turbo switch	CN9
Serial port (COM2)	CN3	IDE interface LED	CN10
IDE interface	CN4	Power LED & keylock	CN11
Floppy drive interface	CN5	32-bit VESA local bus slot	S1
Turbo LED	CN6	32-bit VESA local bus slot	S2

Continued on next page . . .

DIAMOND MULTIMEDIA SYSTEMS, INC.

FASTBUS VLB

... continued from previous page

USER CONFIGURABLE SETTINGS

Function	Jumper/Switch	Position
í Onboard I/O controller enabled	J23	Closed
Onboard I/O controller disabled	J23	Open
í CMOS memory normal operation	JCOM	pins 2 & 3 closed
CMOS memory clear	JCOM	pins 1 & 2 closed
í Factory configured - do not alter	SW1/7	Off
í Factory configured - do not alter	SW1/8	Off

DRAM CONFIGURATION

Size	Bank 0	Bank 1	Bank 2	Bank 3
16MB	(1) 4M x 36	NONE	NONE	NONE
32MB	(1) 4M x 36	(1) 4M x 36	NONE	NONE
32MB	(1) 8M x 36	NONE	NONE	NONE
64MB	(1) 4M x 36	(1) 4M x 36	(1) 4M x 36	(1) 4M x 36
64MB	(1) 8M x 36	(1) 8M x 36	NONE	NONE
128MB	(1) 8M x 36	(1) 8M x 36	(1) 8M x 36	(1) 8M x 36

CACHE CONFIGURATION

Size	S3	JTAG1	JTAG2
64KB	64KB module	Installed	Not installed
128KB	256KB module	Not installed	Installed

VESA CPU TYPE (ID0 & ID1) CONFIGURATION

CPU Type	SW1/switch 1 (ID0)	SW1/2 (ID1)
80386	On	Off
80486	Off	On

VESA WAIT STATE (ID2) CONFIGURATION

Wait states	CPU speed	SW1/3(ID2)
0 wait states	≤ 33MHz	Off
1 wait state	> 33MHz	On

VESA BUS SPEED (ID3) CONFIGURATION

CPU speed	SW1/4 (ID3)
≤ 33MHz	Off
> 33MHz	On

VESA ID4 CONFIGURATION

Setting	SW1/5 (ID4)
Reserved for future use	On

Continued on next page . . .

DIAMOND MULTIMEDIA SYSTEMS, INC.

FASTBUS VLB

... continued from previous page

CPU TYPE CONFIGURATION						
TYPE	JCALA	JNMI	JFERR	JIGN	JCLK	JCLK2
AMD386	pins 1 & 2	Open	pins 2 & 3	pins 2 & 3	pins 2 & 3	pins 2 & 3
80486SX	pins 2 & 3	Open	pins 2 & 3	pins 2 & 3	pins 1 & 2	pins 1 & 2
80487SX	pins 2 & 3	Closed	pins 1 & 2	pins 1 & 2	pins 1 & 2	pins 1 & 2
80486DX	pins 2 & 3	Closed	pins 2 & 3	pins 1 & 2	pins 1 & 2	pins 1 & 2
80486DX2	pins 2 & 3	Closed	pins 2 & 3	pins 1 & 2	pins 1 & 2	pins 1 & 2

Note: AMD386 is a CPU module available from the manufacturer

CPU SPEED CONFIGURATION		
TYPE	Speed	SW2/6
AMD386	40MHz	On
80486SX	25MHz	On
80486SX	33MHz	Off
80487SX	25MHz	On
80487SX	33MHz	Off
80486DX	25MHz	On
80486DX	33MHz	Off
80486DX	50MHz	Off
80486DX2	50i MHz	On
80486DX2	66i MHz	Off