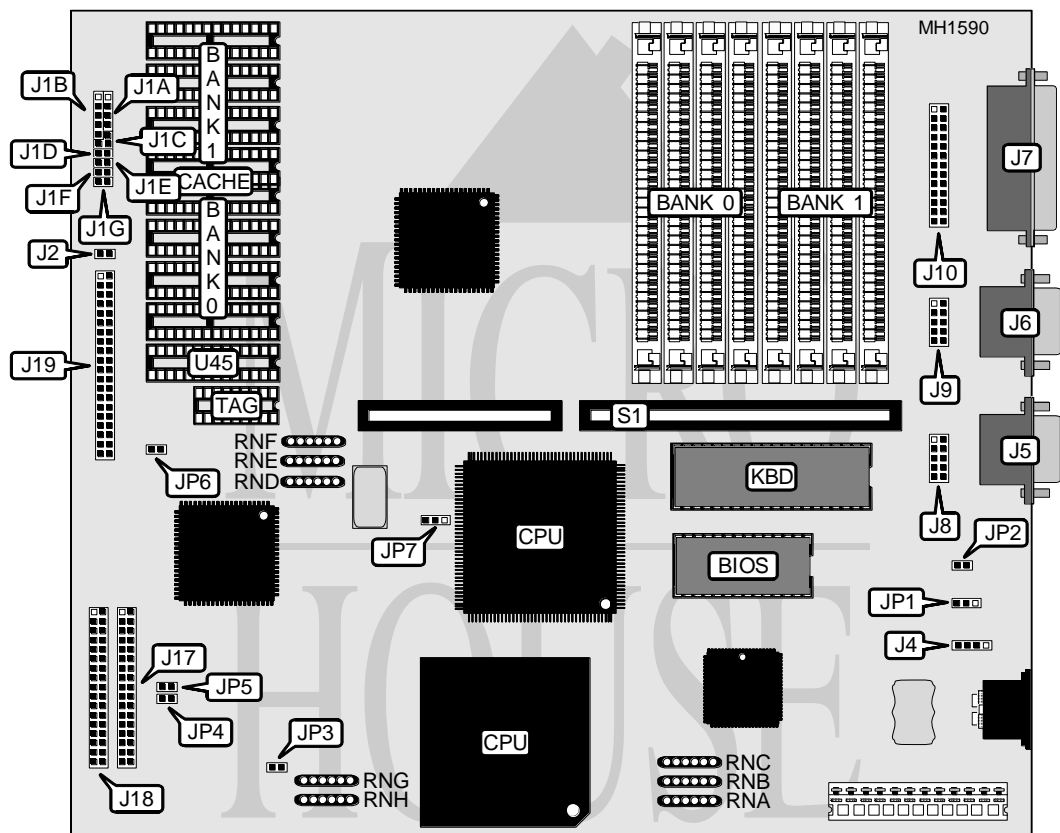


TMC RESEARCH CORPORATION

IAT48PX

Processor	80486SX/80487SX/80486DX/ODP486SX/80486DX2
Processor Speed	20/25/33/50 (Internal)/50/60 (Internal)MHz
Chip Set	OPTI
Max. onboard DRAM	32MB
SRAM Cache	64/128/256KB
BIOS	AMI
Dimensions	330mm x 218mm
I/O Options	Floppy drive interface, floppy drive interface, parallel ports (2), serial ports (2)
NPU Options	None



CONNECTIONS			
Purpose	Location	Purpose	Location
Speaker	J1A	Serial port (COM1) DB-9	J6
Power LED & keylock	J1B	Parallel port DP-9	J7
Not used	J1C	10-pin header serial port (COM2)	J8
Turbo switch	J1D	10-pin header serial port (COM1)	J9
Turbo LED	J1E	Parallel port 10-pin header	J10
Reset switch	J1F	No function	J17
IDE interface LED	J1G, J2	Floppy drive interface	J18
External battery	J4	IDE interface	J19
Serial port (COM2) DB-9	J5	16-bit riser card	S1
Note: Depending on the specifications, the IAT48PX will have either 10-pin header serial ports or the DB-9 serial ports.			

Continued on next page . . .

TMC RESEARCH CORPORATION

IAT48PX

... continued from previous page

USER CONFIGURABLE SETTINGS		
Function	Jumper	Position
í CMOS memory normal operation (Internal Battery)	JP1	pins 2 & 3 closed
CMOS memory normal operation (External Battery)	JP1	Open
CMOS memory clear	JP1	pins 1 & 2 closed
í Monitor type select color	JP2	Closed
Monitor type select monochrome	JP2	Open
í Floppy drive interface (J18) enabled	JP3	Closed
Floppy drive interface (J18) disabled	JP3	Open
í IDE interface enabled	JP4 & JP5	Closed
IDE interface disabled	JP4 & JP5	Open
í I/O bus speed select ATCLK/4	JP6	Open
I/O bus speed select ATCLK/6	JP6	Closed
í CPU clock select single frequency	JP7	pins 1 & 2 closed
CPU speed select dual frequency	JP7	pins 2 & 3 closed

DRAM CONFIGURATION		
Size	Bank 0	Bank 1
1MB	(4) 256K x 9	NONE
2MB	(4) 256K x 9	(4) 256K x 9
4MB	(4) 1M x 9	NONE
5MB	(4) 1M x 9	(4) 256K x 9
8MB	(4) 1M x 9	(4) 1M x 9
16MB	(4) 4M x 9	NONE
20MB	(4) 4M x 9	(4) 1M x 9
32MB	(4) 4M x 9	(4) 4M x 9

CACHE CONFIGURATION				
Size	Bank 0	Bank 1	U45	U44 (TAG)
64KB	(4) 8K x 8	(4) 8K x 8	(1) 8K x 8	(1) 4K x 4
128KB	(4) 32K x 8	None	(1) 8K x 8	(1) 4K x 4
256KB	(4) 32K x 8	(4) 32K x 8	(1) 8K x 8	(1) 4K x 4

CACHE RN SOCKET CONFIGURATION			
Size	RND	RNE	RNF
64KB	Installed	Not installed	Not installed
128KB	Not installed	Installed	Not installed
256KB	Not installed	Not installed	Installed

SERIAL PORT CONFIGURATION		
COM1	COM2	RNH
í COM1	COM2	Installed on 1, 2, 3, and 4
COM1	Disabled	Installed on 2, 3, 4, and 5
Disabled	COM2	Installed on 3, 4, 5, and 6
Disabled	Disabled	Installed on 4, 5, 6, and 7

Continued on next page ...

TMC RESEARCH CORPORATION

IAT48PX

... continued from previous page

PARALLEL PORT CONFIGURATION		
LPT	Address	RNG
1	3BCh - 3BEh	Installed on 2, 3, 4, and 5
2	378h - 37Fh	Installed on 1, 2, 3, and 4
Disabled	N/A	Installed on 4, 5, 6, and 7

CPU TYPE CONFIGURATION			
Type	RNA	RNB	RNC
80486SX	Not installed	Not installed	Installed
80487SX	Not installed	Installed	Not installed
80486DX	Installed	Not installed	Not installed
ODP486SX	Not installed	Installed	Not installed
80486DX2	Installed	Not installed	Not installed