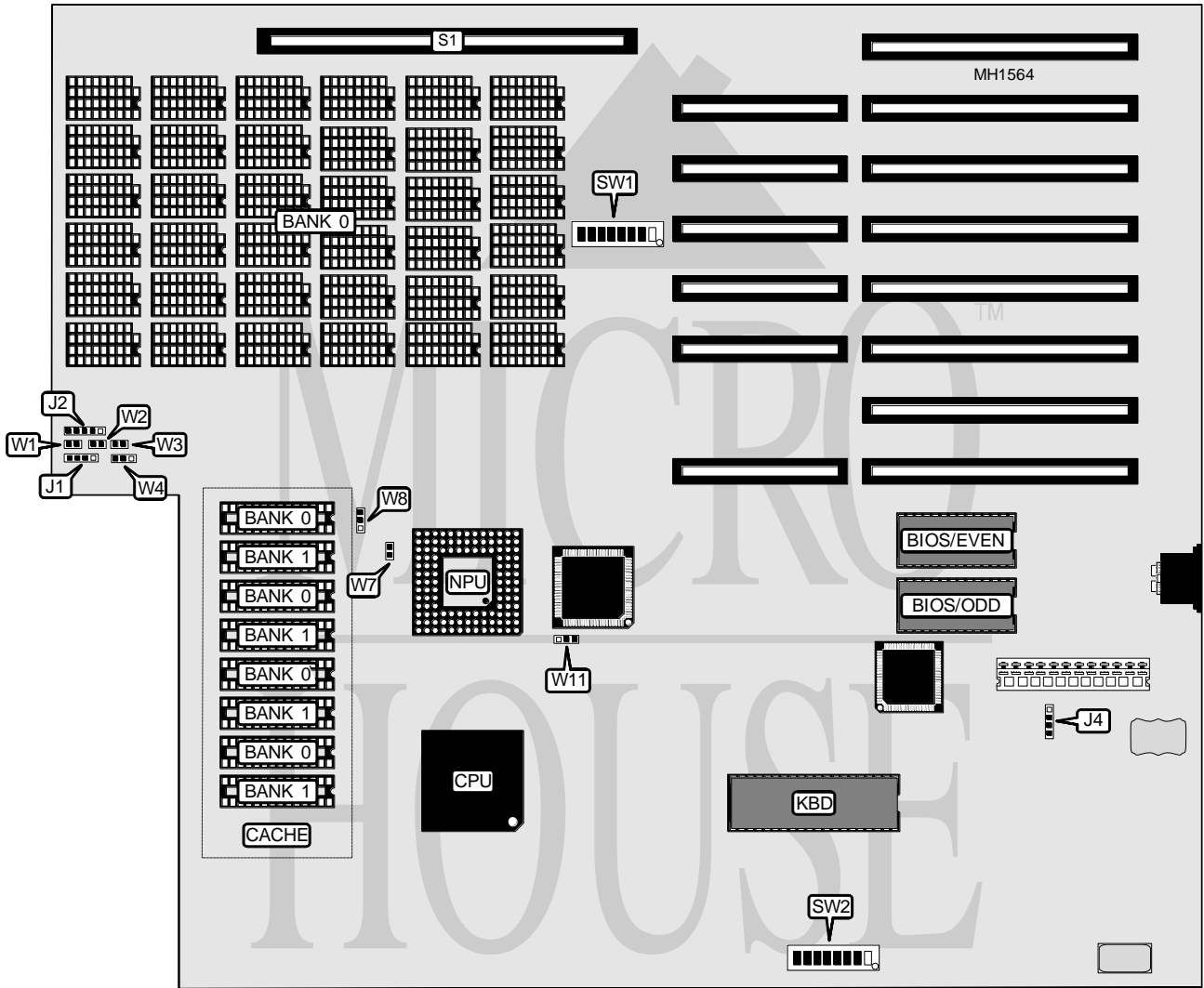


EDE ELECTRONIC LABORATORY SERVICES

CACHE 386

Processor	80386DX
Processor Speed	25/33MHz
Chip Set	Unknown
Max. onboard DRAM	4MB (16MB external)
SRAM Cache	32/64KB
BIOS	AMI/Phoenix
Dimensions	355mm x 305mm
I/O Options	32-bit memory card
NPU Options	80387DX/3167



Continued on next page . . .

EDE ELECTRONIC LABORATORY SERVICES

CACHE 386

... continued from previous page

CONNECTIONS			
Purpose	Location	Purpose	Location
Speaker	J1	Reset switch	W3
Power LED & Keylock	J2	Turbo switch	W4
External battery	J4	Turbo LED	W5
32-bit external memory card	S1		

USER CONFIGURABLE SETTINGS		
Function	Jumper/Switch	Position
í Factory configured - do not alter	SW2/1	Off
í Factory configured - do not alter	SW2/3	Off
í Video BIOS shadowing enabled	SW2/4	On
Video BIOS shadowing disabled	SW2/4	Off
í Factory configured - do not alter	SW2/5	Off
í Monitor type select color	SW2/6	On
Monitor type select monochrome	SW2/6	Off
í Cache enabled	SW2/7	On
Cache disabled	SW2/7	Off
í Bus speed select 8.3MHz	SW2/8	Off
Bus speed select 12.5 MHz	SW2/8	On
í Factory configured - do not alter	W1	Unknown
í Factory configured - do not alter	W2	Unknown

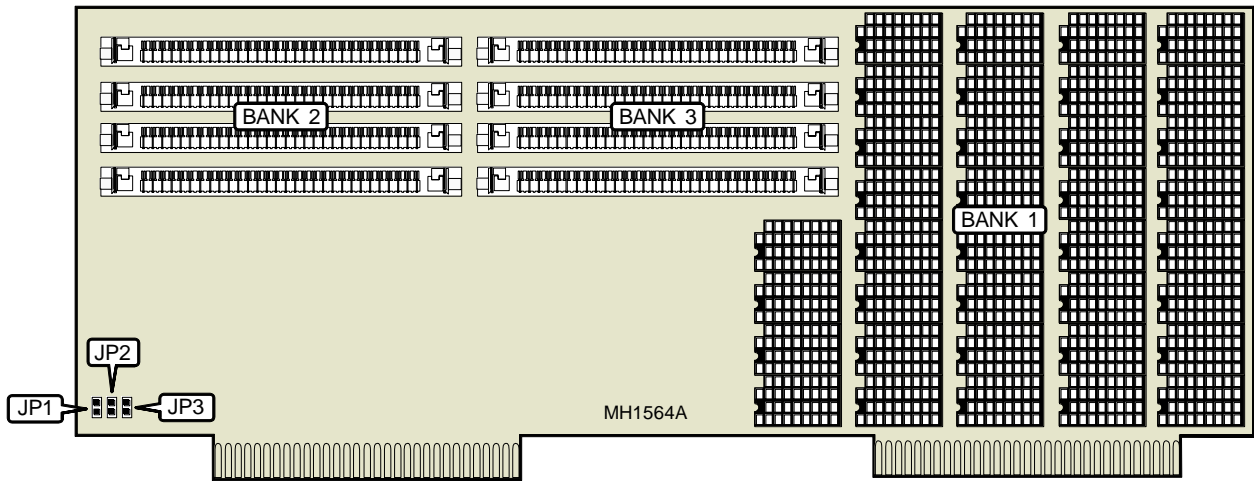
CACHE CONFIGURATION		
Size	Bank 0	Bank 1
32KB	(4) 8K x 8	NONE
64KB	(4) 8K x 8	(4) 8K x 8

CACHE JUMPER CONFIGURATION			
Size	W4	W8	W13
Disabled	pins 2 & 3 closed	N/A	N/A
32KB	pins 1 & 2 closed	Closed	pins 1 & 2 closed
64KB	pins 1 & 2 closed	Open	pins 2 & 3 closed

Continued on next page ...

EDE ELECTRONIC LABORATORY SERVICES
 CACHE 386

... continued from previous page



DRAM CONFIGURATION						
Jumper	1MB	2MB	4MB	8MB	12MB	16MB
SW1/1	On	Off	On	Off	Off	Off
SW1/2	Off	On	On	On	Off	Off
SW1/3	On	On	Off	Off	Off	Off
SW1/4	On	On	Off	Off	Off	Off
JP1	Open	Open	Open	Open	Open	Open
JP2	Open	Open	Open	Open	Closed	Closed
JP3	Open	Open	Open	Closed	Open	Closed
Bank 0	256K x 1	256K x 1	1024 x 1	1024 x 1	1024 x 1	1024 x 1
Bank 1	NONE	256K x 1	NONE	1024 x 1	1024 x 1	1024 x 1
Bank 2	NONE	NONE	NONE	NONE	(4) 1M x 9	(4) 1M x 9
Bank 3	NONE	NONE	NONE	NONE	NONE	(4) 1M x 9

Note: JP1, JP2, JP3, Bank 1, Bank 2, and Bank 3 are located on the 32-bit external memory card.

NPU CONFIGURATION				
NPU	Mode	SW2/2	W7	W11
Disabled	N/A	Off	N/A	N/A
80387DX/3167	Asynchronous	On	pins 1 & 2 closed	pins 2 & 3 closed
80387DX/3167	Synchronous	On	pins 2 & 3 closed	pins 1 & 2 closed