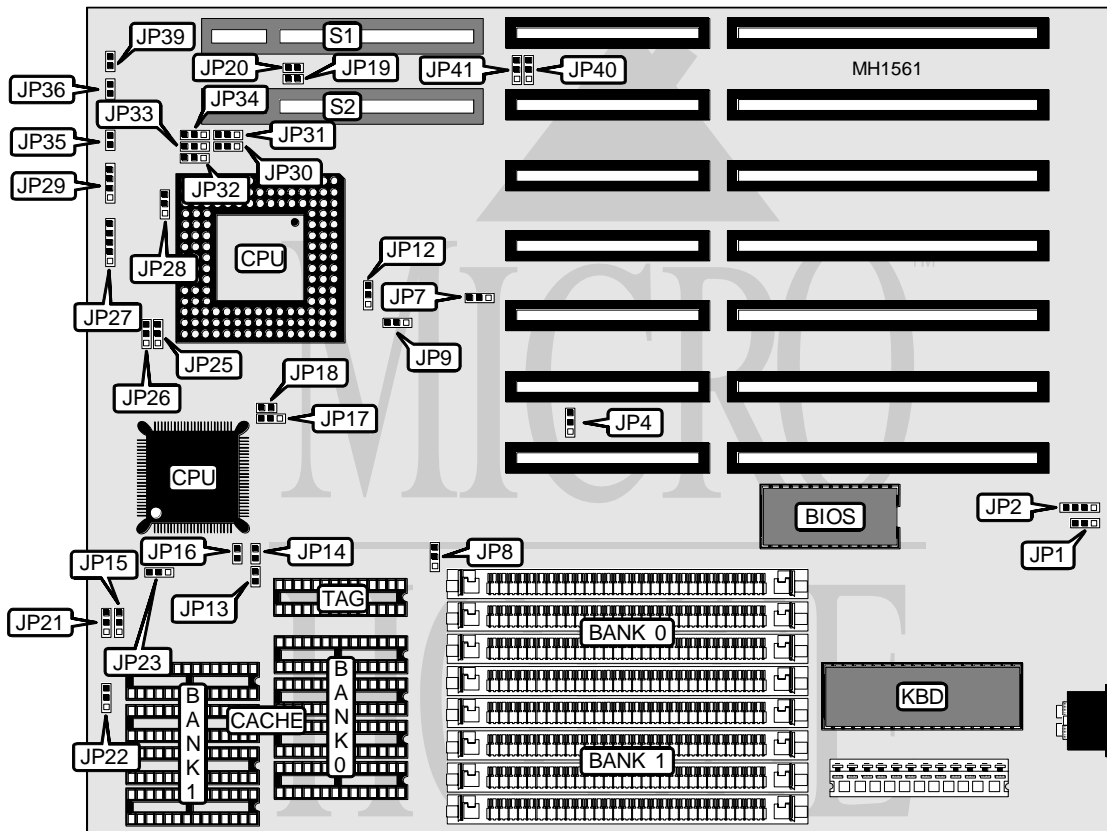


NOVACOR, INC.

NOVAS VESA E734XL (REV.1C)

Processor	80386DX/CX486DLC/80486SX/80487SX/80486DX
Processor Speed	33/50(internal)/50/66(internal)MHz
Chip Set	EFAR
Max. onboard DRAM	32MB
Cache	32/64/128/256KB
BIOS	AMI
Dimensions	254mm x 218mm
I/O Options	32-bit VESA card slot (2)
NPU Options	None



CONNECTIONS				
Purpose	Location	Purpose	Location	
External battery	JP2	Turbo LED	JP36	
Power LED & keylock	JP27	Turbo switch	JP39	
Speaker	JP29	32-bit VESA card slot	S1	
Reset switch	JP35	32-bit VESA card slot	S2	

Continued on next page . . .

NOVACOR, INC.
NOVAS VESA E734XL (Rev.1C)

... continued from previous page

USER CONFIGURABLE SETTINGS		
Function	Jumper	Position
í CMOS memory normal operation	JP1	pins 2 & 3 closed
CMOS memory clear	JP1	pins 1 & 2 closed
í CPU speed select ATCLK/2 (386 mode)	JP9	pins 1 & 2 closed
CPU speed select ATCLK/1 (386 mode)	JP9	pins 2 & 3 closed
í Factory configured - do not alter	JP20	Open
í Factory configured - do not alter	JP40	pins 2 & 3 closed
í Factory configured - do not alter	JP41	pins 2 & 3 closed

CACHE CONFIGURATION			
Size	Bank 0	Bank 1	TAG
32KB	(4) 8K x 8	None	(1) 8K x 8
64KB	(4) 8K x 8	(4) 8K x 8	(1) 8K x 8
128KB	(4) 32K x 8	None	(1) 8K x 8
256KB	(4) 32K x 8	(4) 32K x 8	(1) 32K x 8

CACHE JUMPER CONFIGURATION							
Size	JP13	JP14	JP15	JP16	JP21	JP22	JP23
32KB	Open	Open	pins 2 & 3	Open	pins 1 & 2	pins 2 & 3	pins 2 & 3
64KB	Open	Open	pins 2 & 3	Closed	pins 1 & 2	pins 1 & 2	pins 1 & 2
128KB	Closed	Open	pins 1 & 2	Closed	pins 2 & 3	pins 1 & 2	pins 2 & 3
256KB	Closed	Closed	pins 1 & 2	Closed	pins 1 & 2	pins 1 & 2	pins 1 & 2

DRAM CONFIGURATION		
Size	Bank 0	Bank 1
1MB	(4) 256K x 9	NONE
2MB	(4) 256K x 9	(4) 256K x 9
4MB	(4) 1M x 9	NONE
5MB	(4) 256K x 9	(4) 1M x 9
8MB	(4) 1M x 9	(4) 1M x 9
16MB	(4) 4M x 9	NONE
20MB	(4) 1M x 9	(4) 4M x 9
32MB	(4) 4M x 9	(4) 4M x 9

Continued on next page . . .

NOVACOR, INC.
NOVAS VESA E734XL (Rev.1C)

... continued from previous page

VESA CPU TYPE (ID0 & ID1) CONFIGURATION		
CPU Type	JP31 (ID0)	JP32 (ID1)
80386	pins 1 & 2 closed	pins 2 & 3 closed
80486	pins 2 & 3 closed	pins 1 & 2 closed

VESA WAIT STATE/BUS SPEED (ID2 & ID3) CONFIGURATION			
CPU speed	Wait states	JP30 (ID3)	JP34 (ID2)
≤ 33MHz	0 wait states	pins 1 & 2 closed	pins 1 & 2 closed
> 33MHz	1 wait state	pins 2 & 3 closed	pins 2 & 3 closed

VESA ID4 CONFIGURATION	
Setting	JP33 (ID4)
Reserved for future use	pins 2 & 3 closed

CPU TYPE CONFIGURATION					
Type	80386DX	CX486DLC	80486SX	80487SX	80486DX
JP4	pins 1 & 2	N/A	N/A	N/A	pins 2 & 3
JP7	pins 1 & 2	pins 1 & 2	pins 2 & 3	pins 2 & 3	pins 2 & 3
JP8	pins 1 & 2	pins 2 & 3	pins 1 & 2	pins 1 & 2	pins 1 & 2
JP12	N/A	N/A	Open	pins 1 & 2	pins 2 & 3
JP17	N/A	N/A	pins 2 & 3	pins 1 & 2	pins 1 & 2
JP18	N/A	N/A	Open	Closed	Closed
JP19	Closed	Closed	Open	Open	Open
JP25	pins 1 & 2	N/A	N/A	N/A	pins 2 & 3
JP26	pins 1 & 2	N/A	N/A	N/A	pins 2 & 3
JP28	pins 1 & 2	N/A	N/A	N/A	pins 2 & 3
JP31	pins 1 & 2	pins 1 & 2	pins 2 & 3	pins 2 & 3	pins 2 & 3

Note: Pins designated should be in the closed position.