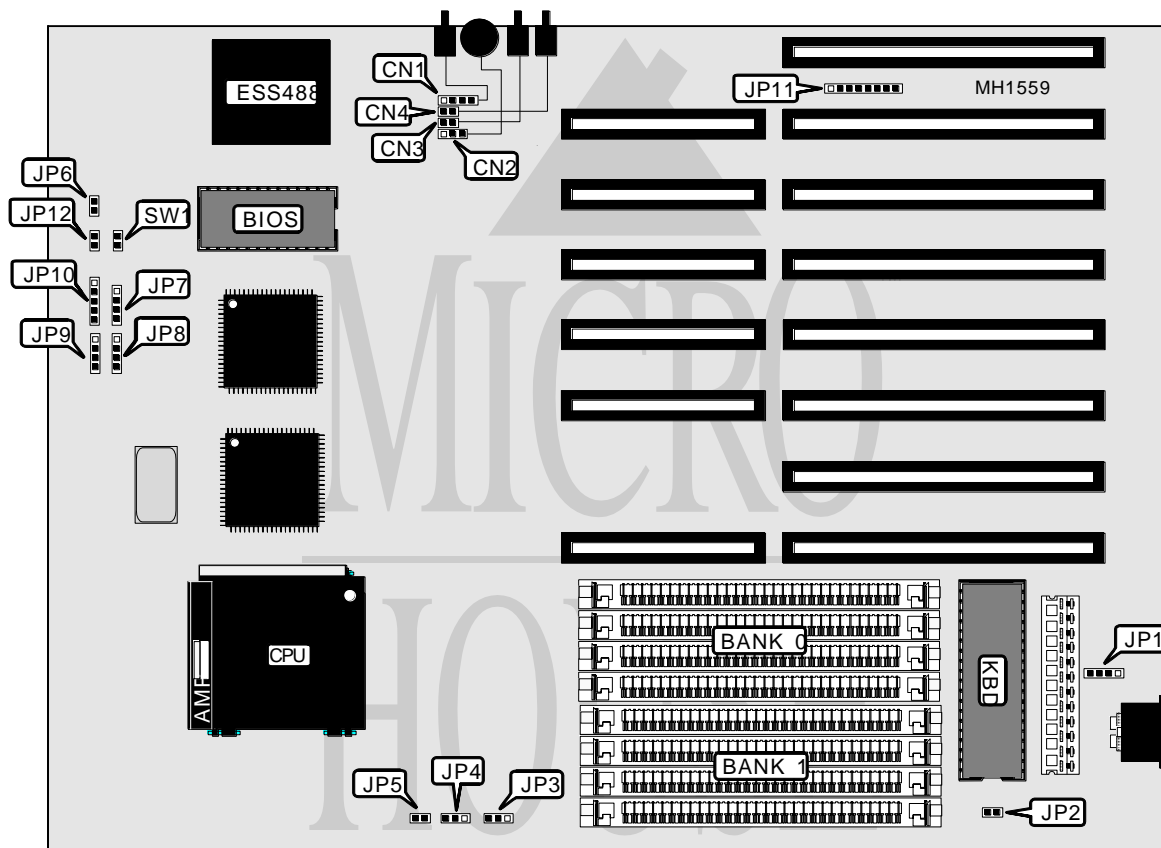


QUICKPATH SYSTEMS, INC.

POWERSOUND 486I

Processor	80486SX/80486DX/80486DX2
Processor Speed	25/33/50(Internal)/66(Internal)MHz
Chip Set	OPTI
Max. onboard DRAM	32MB
SRAM Cache	None
BIOS	AMI/MR
Dimensions	330mm x 218mm
I/O Options	Line in, microphone in, volume control, and speaker out (controlled by onboard ES488, a Sound Blaster Pro compatible sound processor.)
NPU Options	None



CONNECTIONS			
Purpose	Location	Purpose	Location
External battery	JP1	Speaker out	CN1
Turbo Switch	JP6	Volume	CN2
Speaker	JP9	Line in	CN3
Power LED and keylock	JP10	Microphone in	CN4
Turbo LED	JP12	Reset switch	SW1

Continued on next page . . .

QUICKPATH SYSTEMS, INC.
POWERSOUND 486I

USER CONFIGURABLE SETTINGS		
Function	Jumper/Switch	Position
í Monitor type select color	JP2	Closed
Monitor type select monochrome	JP2	Open

ONBOARD SOUND SYSTEM DMA CONFIGURATION		
DMA	JP7	JP8
í DMA1	Pins 1 & 2 closed	Pins 1 & 2 closed
DMA3	pins 3 & 4 closed	pins 3 & 4 closed

ONBOARD SOUND SYSTEM INTERRUPT CONFIGURATION	
Interrupt	JP11
IRQ3	Pins 1 & 2 closed
IRQ5	pins 3 & 4 closed
í IRQ7	pins 5 & 6 closed
IRQ9	pins 7 & 8 closed

DRAM CONFIGURATION		
Size	Bank 0	Bank 1
1MB	(4) 256K x 9	NONE
2MB	(4) 256K x 9	(4) 256K x 9
4MB	(4) 1M x 9	NONE
5MB	(4) 256K x 9	(4) 1M x 9
8MB	(4) 1M x 9	(4) 1M x 9
16MB	(4) 4M x 9	NONE
20MB	(4) 1M x 9	(4) 4M x 9
32MB	(4) 4M x 9	(4) 4M x 9

CPU TYPE AND SPEED CONFIGURATIONS					
Type	CPU Speed	OSC	JP3	JP4	JP5
80486SX	25MHz	25MHz	Open	pins 2 & 3 closed	Open
80487SX	25MHz	25MHz	pins 2 & 3 closed	pins 1 & 2 closed	Closed
80486DX	33MHz	33MHz	pins 1 & 2 closed	pins 1 & 2 closed	Closed
80486DX2	50i MHz	25MHz	pins 2 & 3 closed	pins 1 & 2 closed	Closed
80486DX2	66i MHz	33MHz	pins 1 & 2 closed	pins 1 & 2 closed	Closed