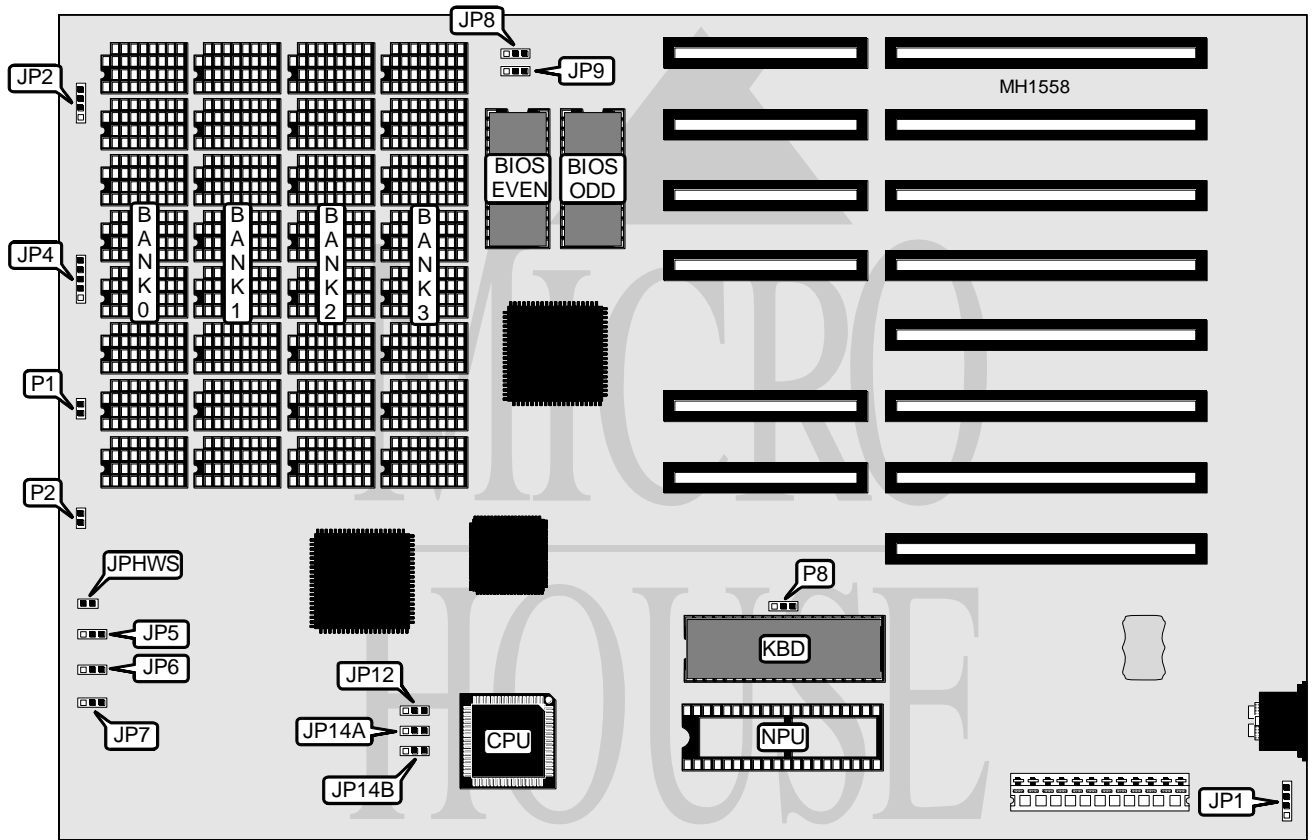


ATRONICS INTERNATIONAL, INC.

ATI-2000/B

Processor 80286
Processor Speed 10/12/16MHz
Chip Set Headland
Max. onboard DRAM 4MB
Cache None
BIOS AMI
Dimensions 330mm x 218mm
I/O Options None
NPU Options 80287



CONNECTIONS			
Purpose	Location	Purpose	Location
External battery	JP1	Turbo switch connector	JPHWS
Speaker	JP2	Reset switch (optional)	P1
Keylock	JP4	Turbo LED (optional)	P2

Continued on next page . . .

ATRONICS INTERNATIONAL, INC.
ATI-2000/B

... continued from previous page

USER CONFIGURABLE SETTINGS		
Function	Jumper/Switch	Position
í I/O bus speed select 0 wait states	JP5	pins 2 & 3 closed
I/O bus speed select 1 wait state	JP5	pins 1 & 2 closed
í I/O wait state selectable via the keyboard	JP6	pins 1 & 2 closed
I/O wait state selectable via JP5	JP6	pins 2 & 3 closed
í CPU speed selectable via the keyboard	JP7	pins 1 & 2 closed
CPU speed selectable via the turbo switch	JP7	pins 2 & 3 closed
í BIOS type select 27128	JP8 & JP9	pins 1 & 2 closed
BIOS type select 27256	JP8 & JP9	pins 2 & 3 closed
í Monitor type select color	P8	pins 2 & 3 closed
Monitor type select monochrome	P8	pins 1 & 2 closed

DRAM CONFIGURATION				
Size	Bank 0	Bank 1	Bank 2	Bank 3
256KB	(8) 256K x 1	NONE	NONE	NONE
512KB	(8) 256K x 1	(8) 256K x 1	NONE	NONE
640KB	(8) 64K x 1	(8) 64K x 1	(8) 256K x 1	(8) 256K x 1
1MB	(8) 256K x 1	(8) 256K x 1	(8) 256K x 1	(8) 256K x 1
2MB	(8) 1M x 1	(8) 1M x 1	NONE	NONE
4MB	(8) 1M x 1	(8) 1M x 1	(8) 1M x 1	(8) 1M x 1

MEMORY SIZE CONFIGURATION			
Size	JP12	JP14A	JP14B
256KB	pins 1 & 2 closed	pins 1 & 2 closed	pins 1 & 2 closed
512KB	pins 1 & 2 closed	pins 1 & 2 closed	pins 2 & 3 closed
640KB	pins 1 & 2 closed	pins 2 & 3 closed	pins 1 & 2 closed
1MB	pins 1 & 2 closed	pins 2 & 3 closed	pins 2 & 3 closed
2MB	pins 2 & 3 closed	pins 2 & 3 closed	pins 1 & 2 closed
4MB	pins 2 & 3 closed	pins 2 & 3 closed	pins 2 & 3 closed