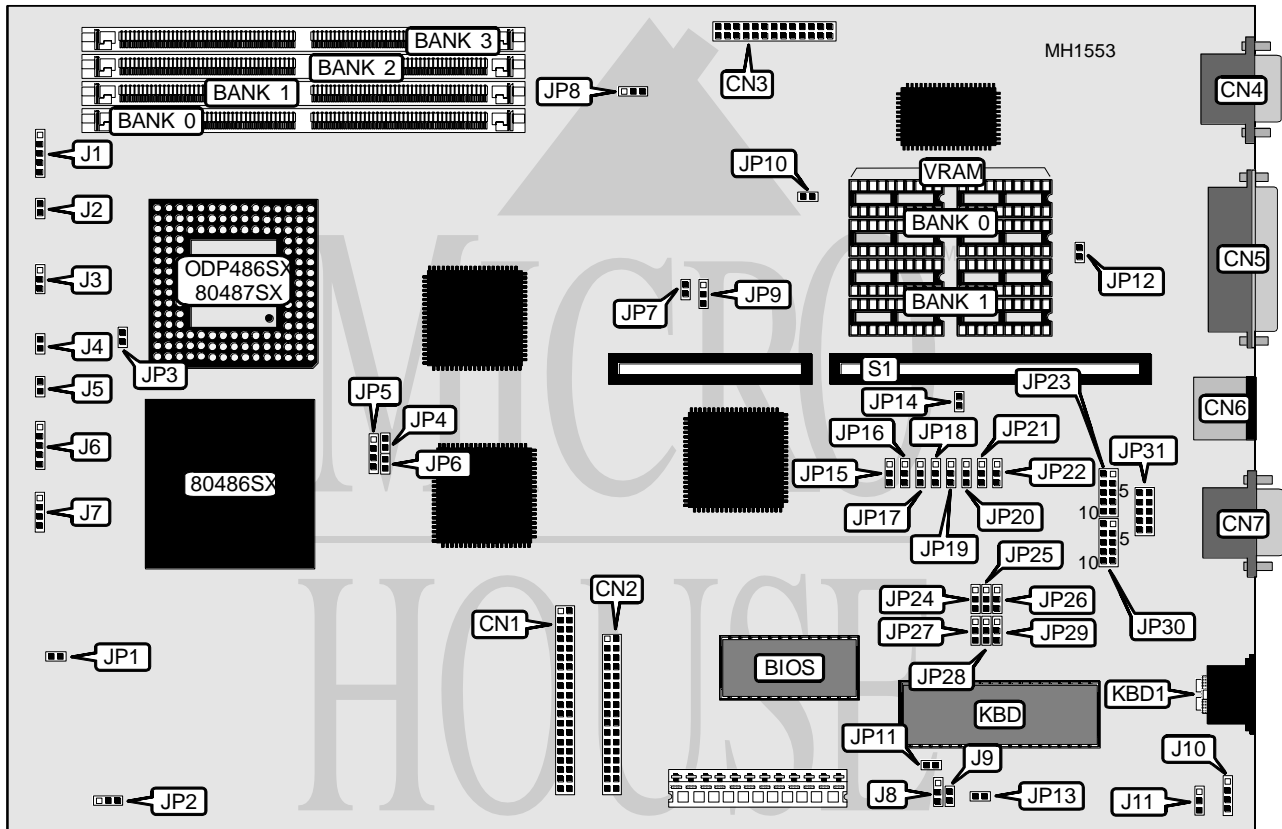


DIAMOND FLOWER, INC.

486SX-20/25UNB A10

Processor	80486SX/80487SX
Processor Speed	20/25MHz
Chip Set	UMC
Max. onboard DRAM	16MB
Cache	None
BIOS	AMI
Dimensions	330mm x 218mm
I/O Options	Floppy drive interface, IDE interface, parallel port, PS/2 mouse port, serial port (2), VGA feature connector, VGA port
NPU Options	None



CONNECTIONS			
Purpose	Location	Purpose	Location
IDE interface	CN1	Turbo switch	J3 & J8
Floppy drive interface	CN2	Reset switch	J4 & J9
VGA feature connector	CN3	IDE interface LED	J5
VGA port	CN4	Power LED & keylock	J6
Parallel port	CN5	Speaker	J7
Bus mouse port	CN6	External battery	J10
Serial port (COM1)	CN7	Serial port (COM2)	JP31
Keyboard connector	J1	Keyboard connector	KBD1
Turbo LED	J2	Riser card	S1

Continued on next page . . .

DIAMOND FLOWER, INC.

486SX-20/25UNB AIO

... continued from previous page

USER CONFIGURABLE SETTINGS		
Function	Jumper	Position
í Battery select internal	J11	pins 2 & 3 closed
Battery select external	J11	pins 1 & 2 closed
í Speaker select internal	JP1	Closed
Speaker select external	JP1	Open
í Factory configured - do not alter	JP4	Open
í Factory configured - do not alter	JP5	pins 2 & 3 closed
CPU speed select 20MHz	JP6	Closed
CPU speed select 25MHz	JP6	Open
í Factory configured - do not alter	JP7	Open
í BIOS type select 27C256 (32KB)	JP8	pins 2 & 3 closed
BIOS type select 27C512 (64KB)	JP8	pins 1 & 2 closed
í Factory configured - do not alter	JP10	Open
í Monitor type select color	JP11	Closed
Monitor type select monochrome	JP11	Open
í Factory configured - do not alter	JP13	Open
í Factory configured - do not alter	JP14	Closed
í Floppy drive interface enabled	JP20	pins 1 & 2 closed
Floppy drive interface disabled	JP20	pins 2 & 3 closed
í Factory configured - do not alter	JP21	pins 1 & 2 closed
í IDE interface enabled	JP22	pins 1 & 2 closed
IDE interface disabled	JP22	pins 2 & 3 closed

DRAM CONFIGURATION				
Size	Bank 0	Bank 1	Bank 2	Bank 3
1MB	(1) 256K x 36	NONE	NONE	NONE
2MB	(1) 256K x 36	(1) 256K x 36	NONE	NONE
3MB	(1) 256K x 36	(1) 256K x 36	(1) 256K x 36	NONE
4MB	(1) 256K x 36	(1) 256K x 36	(1) 256K x 36	(1) 256K x 36
4MB	(1) 1M x 36	NONE	NONE	NONE
5MB	(1) 256K x 36	(1) 1M x 36	NONE	NONE
6MB	(1) 256K x 36	(1) 256K x 36	(1) 1M x 36	NONE
8MB	(1) 1M x 36	(1) 1M x 36	NONE	NONE
9MB	(1) 256K x 36	(1) 1M x 36	(1) 1M x 36	NONE
10MB	(1) 256K x 36	(1) 256K x 36	(1) 1M x 36	(1) 1M x 36
12MB	(1) 1M x 36	(1) 1M x 36	(1) 1M x 36	NONE
16MB	(1) 1M x 36	(1) 1M x 36	(1) 1M x 36	(1) 1M x 36

Continued on next page ...

DIAMOND FLOWER, INC.
486SX-20/25UNB AIO

... continued from previous page

SERIAL PORT CONFIGURATION				
Port 1 (C2)	Port 2 (C1)	JP17	JP18	JP19
í COM1	COM2	pins 1 & 2 closed	pins 1 & 2 closed	pins 1 & 2 closed
COM1	Disabled	pins 1 & 2 closed	pins 2 & 3 closed	pins 1 & 2 closed
Disabled	COM2	pins 2 & 3 closed	pins 1 & 2 closed	pins 1 & 2 closed
`COM2	Disabled	pins 1 & 2 closed	pins 2 & 3 closed	pins 2 & 3 closed
COM2	COM1	pins 1 & 2 closed	pins 1 & 2 closed	pins 2 & 3 closed
Disabled	COM1	pins 2 & 3 closed	pins 1 & 2 closed	pins 2 & 3 closed
Disabled	Disabled	pins 2 & 3 closed	pins 2 & 3 closed	Open

SERIAL PORTS 1 & 2 NORMAL/FORCED TRUE CONFIGURATION				
Port 1 (CN7)	Port 2 (JP31)	JP24	JP25	JP26
Normal	Normal	pins 1 & 2 closed	pins 1 & 2 closed	pins 1 & 2 closed
Forced true	Forced true	pins 2 & 3 closed	pins 2 & 3 closed	pins 2 & 3 closed

SERIAL PORT DTE/DCE CONFIGURATION	
Function	JP30
í Serial Port 1 (CN7) DTE	Pins 1 & 2, 3 & 4, and 5 & 6 closed
Serial Port 1 (CN7)DCE	Pins 1 & 3, 2 & 4, and 6 & 8 closed

SERIAL PORT DTE/DCE CONFIGURATION	
Function	JP23
íSerial Port 2 (JP23) DTE	Pins 7 & 8 and 9 & 10 closed
Serial Port 2 (JP23) DCE	Pins 5 & 7 and 9 & 10 closed

Continued on next page ...

DIAMOND FLOWER, INC.
486SX-20/25UNB AIO

... continued from previous page

PARALLEL PORT 1 (CN5) CONFIGURATION					
LPT	I/O Address	Interrupt	JP9	JP15	JP16
LPT 1	3BC-3BEh	IRQ7	pins 1 & 2	pins 2 & 3	pins 1 & 2
LPT 2	378-37Ah	IRQ7	pins 1 & 2	pins 1 & 2	pins 1 & 2
LPT 3	278-27Ah	IRQ5	pins 2 & 3	pins 1 & 2	pins 2 & 3
Disabled	N/A	N/A	N/A	pins 2 & 3	pins 2 & 3

Note: Pins designated should be in the closed position.

VRAM CONFIGURATION		
Size	VRAM	Location
512KB	(4) 44256	Bank 0
1024KB	(8) 44256	Bank 0 & 1

ONBOARD VGA CONFIGURATION				
Mode	IRQ	JP2	JP3	JP12
í Enabled	2/9	pins 2 & 3 closed	pins 1 & 2 closed	Closed
Disabled	2/9	Closed	Open	Open