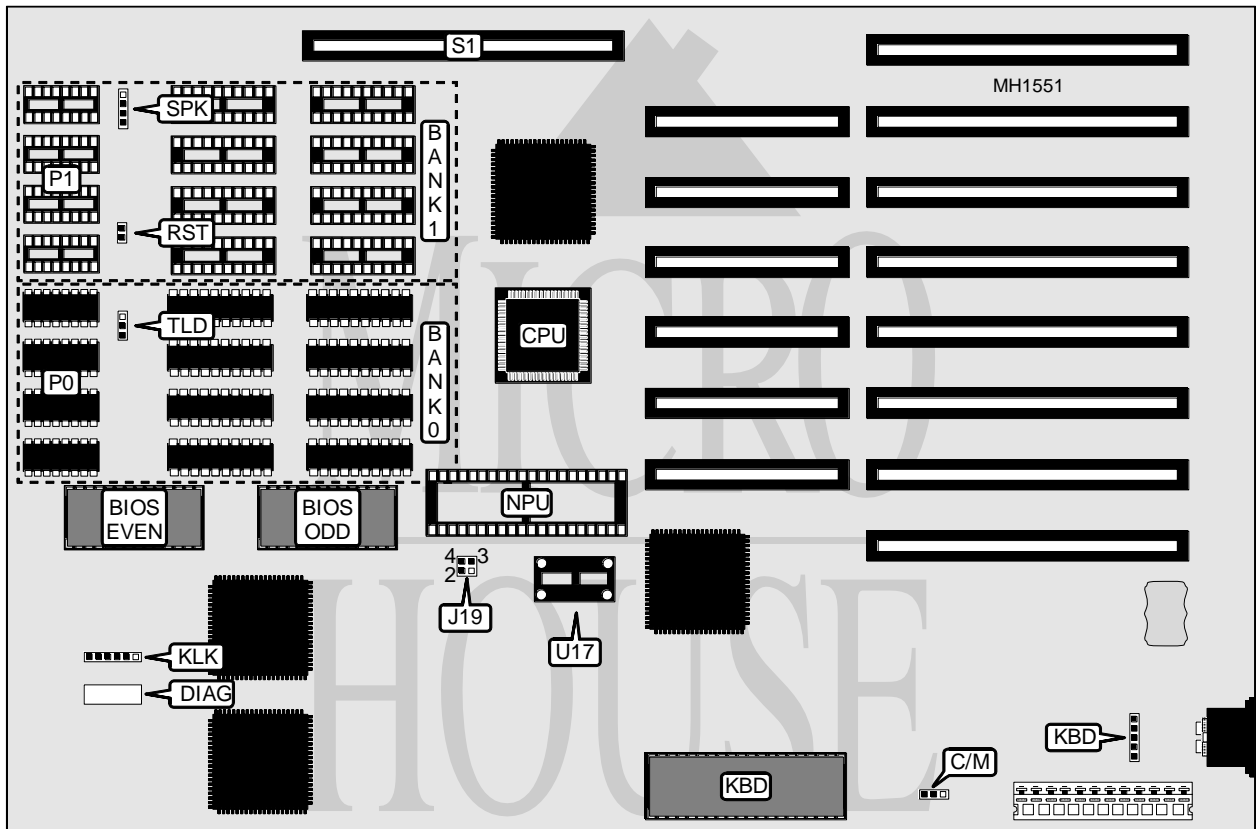


PACKARD BELL PB800/900 (REVISION D)

Processor 80286
Processor Speed 8/10MHz
Chip Set C & T
Max. onboard DRAM 2MB
SRAM Cache None
BIOS Phoenix
Dimensions 330mm x 240mm
I/O Options 32-bit memory expansion slot
NPU Options 80287



CONNECTIONS			
Purpose	Location	Purpose	Location
Diagnostics header	DIAG	32-bit memory expansion slot	S1
Keyboard	KBD	Speaker	SPK
Power LED & keylock	KLK	Turbo LED	TLD
Reset	RST		
Note: The diagnostics header is used in preproduction, and no aftermarket technical information is available on its usage.			

Continued on next page . . .

PACKARD BELL

PB800/900 (REVISION D)

... continued from previous page

USER CONFIGURABLE SETTINGS

Function	Jumper/Switch	Position
í Monitor type select color	C/M	pins 1 & 2 closed
Monitor type select monochrome	C/M	pins 2 & 3 closed

SPEED CONFIGURATION

Speed	U17	J19
8MHz	Empty	pins 1 & 2 closed
10MHz	30-32MHz crystal	pins 3 & 4 closed

DRAM CONFIGURATION

Size	Bank 0	Parity 0 (P0)	Bank 1	Parity 1 (P1)
1MB	(8) 44256	(4) 41256	NONE	NONE
2MB	(8) 44256	(4) 41256	(8) 44256	(4) 41256

Note: Banks are soldered to the board.