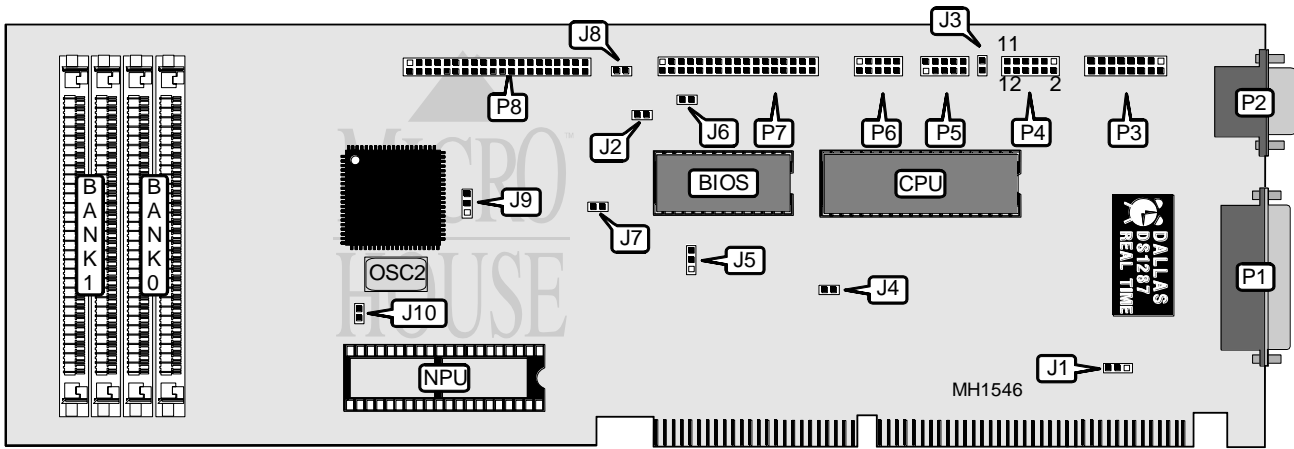


ACTION INSTRUMENTS

FF 286/16

Processor	80286
Processor Speed	12/16MHz
Chip Set	Headland
Max. Onboard DRAM	4MB
SRAM Cache	None
BIOS	Quadtel
Dimensions	337mm x 132mm
I/O Options	Floppy drive interface, IDE interface, parallel port, serial ports (2), VGA digital connector, VGA port
NPU Options	80287



CONNECTIONS			
Purpose	Location	Purpose	Location
Turbo mode LED	J3	Serial port (COM1)	P5
IDE interface LED	J8	Serial port (COM 2)	P6
Parallel port	P1	Floppy drive interface	P7
VGA port	P2	IDE interface	P8
Video digital connector	P3		

Continued on next page . . .

ACTION INSTRUMENTS

FF 286/16

... continued from previous page

PIN OUT CONFIGURATION P4	
Function	Pin
Power good signal (from power supply)	1
Keyboard ground	2
+ Keyboard clock	3
+ 5Vdc	4
+ Keyboard data	5
Ground	6
Reset switch	7
Keyboard inhibit switch	8
Speaker	9 & 10
Turbo switch	11 & 12

USER CONFIGURABLE SETTINGS		
Function	Jumper/Switch	Position
í Onboard video interrupt select IRQ9	J1	pins 1 & 2 closed
Onboard video interrupt select none	J1	pins 2 & 3 closed
í Onboard floppy select DMA2	J2	Closed
Onboard floppy select no DMA	J2	Open
í Monitor type select color	J4	Closed
Monitor type select monochrome	J4	Open
í Parallel port select uni-directional (printer)	J5	pins 2 & 3 closed
Parallel port select bi-directional	J5	pins 1 & 2 closed
í Power good signal detect from board	J6	Open
Power good signal detect from power supply	J6	Closed
í VGA clock synchronous with CPU	J7	Open
VGA clock synchronous with oscillator O3	J7	Closed
í IDE interface enabled	J9	pins 2 & 3 closed
IDE interface disabled	J9	pins 1 & 2 closed
Note: If J6 is closed, power good signal must come from P4/pin 1. If J6 is open, DO NOT connect P4/pin1!		

.DRAM CONFIGURATION		
Size	Bank 0	Bank 1
512KB	(2) 256k x 9	NONE
1MB	(2) 256k x 9	(2) 256k x 9
2MB	(2) 1M x 9	NONE
2.5MB	(2) 256K x 9	(2) 1M x 9
4MB	(2) 1M x 9	(2) 1M x 9

CPU SPEED CONFIGURATION		
CPU	OSC/2	J10
í 16MHz	16MHz	Closed
12MHz	24MHz	Open