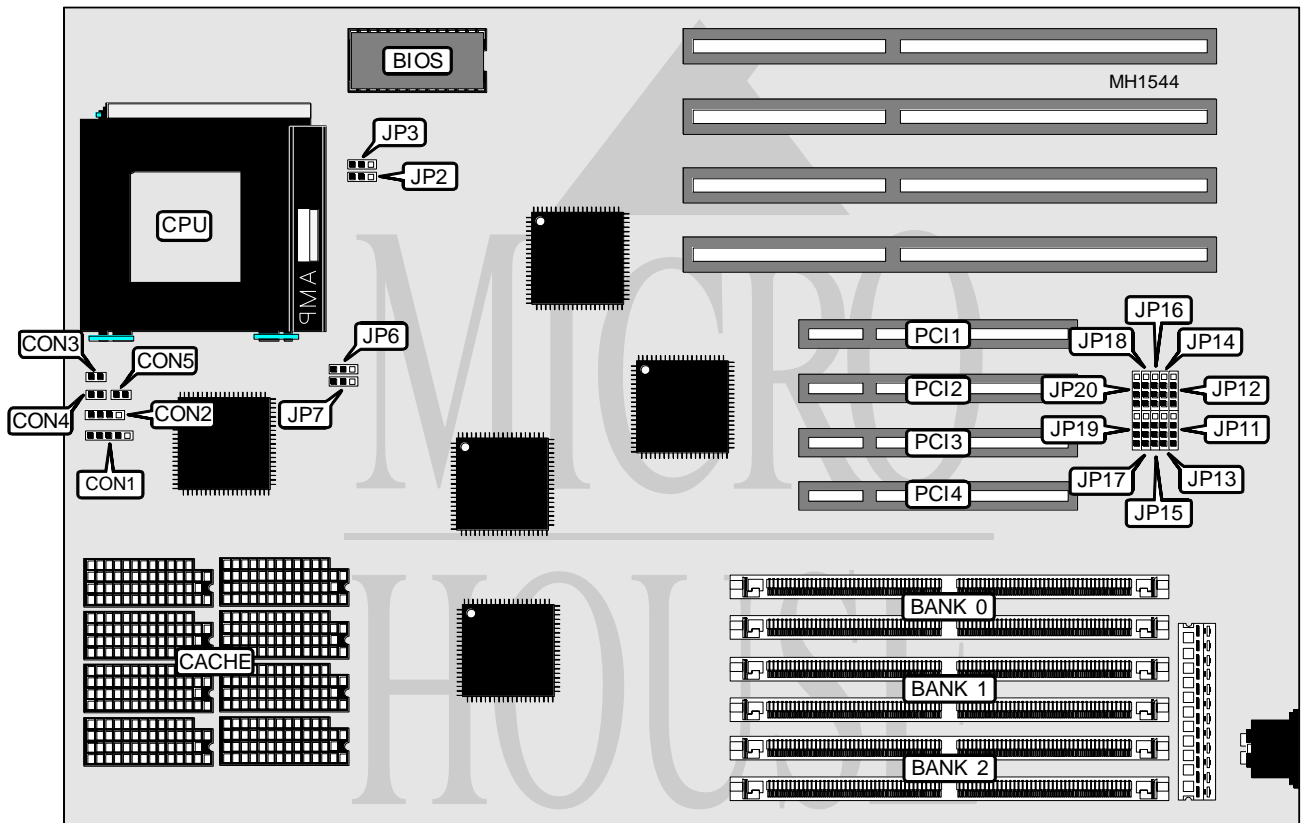


ASUS COMPUTER INTERNATIONAL P C I / E - P 5 M P 4

Processor	Pentium
Processor Speed	60/66MHz
Chip Set	ACC
Max. Onboard DRAM	192MB
Cache	256/512KB
BIOS	Award
Dimensions	330mm x 218mm
I/O Options	32-bit PCI slots (4)
NPU Options	None



CONNECTIONS			
Purpose	Location	Purpose	Location
Power LED & keylock	CON1	32-bit PCI slot	PCI1
Speaker	CON2	32-bit PCI slot	PCI2
Reset switch	CON3	32-bit PCI slot	PCI3
Turbo switch	CON4	32-bit PCI slot	PCI4
Turbo LED	CON5		

Continued on next page . . .

ASUS COMPUTER INTERNATIONAL

PCI/E - P5MP4

... continued from previous page

DRAM CONFIGURATION			
Size	Bank 0	Bank 1	Bank 2
2MB	(2) 1M x 36	NONE	NONE
4MB	(2) 1M x 36	(2) 1M x 36	NONE
4MB	(2) 2M x 36	NONE	NONE
6MB	(2) 1M x 36	(2) 1M x 36	(2) 1M x 36
6MB	(2) 1M x 36	(2) 2M x 36	NONE
8MB	(2) 2M x 36	(2) 2M x 36	NONE
8MB	(2) 2M x 36	(2) 1M x 36	(2) 1M x 36
8MB	(2) 4M x 36	NONE	NONE
10MB	(2) 1M x 36	(2) 2M x 36	(2) 2M x 36
10MB	(2) 4M x 36	(2) 1M x 36	NONE
12MB	(2) 2M x 36	(2) 2M x 36	(2) 2M x 36
12MB	(2) 2M x 36	(2) 4M x 36	NONE
12MB	(2) 4M x 36	(2) 1M x 36	(2) 1M x 36
12MB	(2) 4M x 36	(2) 2M x 36	NONE
16MB	(2) 4M x 36	(2) 2M x 36	(2) 2M x 36
16MB	(2) 4M x 36	(2) 4M x 36	NONE
16MB	(2) 8M x 36	NONE	NONE
18MB	(2) 8M x 36	(2) 1M x 36	NONE
18MB	(2) 1M x 36	(2) 8M x 36	NONE
18MB	(2) 1M x 36	(2) 4M x 36	(2) 4M x 36
20MB	(2) 2M x 36	(2) 4M x 36	(2) 4M x 36
20MB	(2) 2M x 36	(2) 8M x 36	NONE
20MB	(2) 8M x 36	(2) 1M x 36	(2) 1M x 36
20MB	(2) 8M x 36	(2) 2M x 36	NONE
24MB	(2) 4M x 36	(2) 4M x 36	(2) 4M x 36
24MB	(2) 4M x 36	(2) 8M x 36	NONE
24MB	(2) 8M x 36	(2) 2M x 36	(2) 2M x 36
24MB	(2) 8M x 36	(2) 4M x 36	NONE
32MB	(2) 8M x 36	(2) 4M x 36	(2) 4M x 36
32MB	(2) 8M x 36	(2) 8M x 36	NONE
32MB	(2) 16M x 36	NONE	NONE
34MB	(2) 1M x 36	(2) 8M x 36	(2) 8M x 36
34MB	(2) 1M x 36	(2) 16M x 36	NONE
34MB	(2) 16M x 36	(2) 1M x 36	NONE
36MB	(2) 2M x 36	(2) 8M x 36	(2) 8M x 36
36MB	(2) 2M x 36	(2) 16M x 36	NONE
36MB	(2) 16M x 36	(2) 1M x 36	(2) 1M x 36
36MB	(2) 16M x 36	(2) 2M x 36	NONE
40MB	(2) 4M x 36	(2) 8M x 36	(2) 8M x 36
40MB	(2) 4M x 36	(2) 16M x 36	NONE
40MB	(2) 16M x 36	(2) 2M x 36	(2) 2M x 36
40MB	(2) 16M x 36	(2) 4M x 36	NONE

Continued on next page . . .

ASUS COMPUTER INTERNATIONAL

PCI/E - P5MP4

... continued from previous page

DRAM CONFIGURATION			
Size	Bank 0	Bank 1	Bank 2
48MB	(2) 8M x 36	(2) 8M x 36	(2) 8M x 36
48MB	(2) 8M x 36	(2) 16M x 36	NONE
48MB	(2) 16M x 36	(2) 8M x 36	NONE
64MB	(2) 16M x 36	(2) 8M x 36	(2) 8M x 36
64MB	(2) 16M x 36	(2) 16M x 36	NONE
64MB	(2) 32M x 36	NONE	NONE
66MB	(2) 1M x 36	(2) 16M x 36	(2) 16M x 36
66MB	(2) 1M x 36	(2) 32M x 36	NONE
66MB	(2) 32M x 36	(2) 1M x 36	NONE
68MB	(2) 2M x 36	(2) 16M x 36	(2) 16M x 36
68MB	(2) 2M x 36	(2) 32M x 36	NONE
68MB	(2) 32M x 36	(2) 1M x 36	(2) 1M x 36
68MB	(2) 32M x 36	(2) 2M x 36	NONE
72MB	(2) 4M x 36	(2) 16M x 36	(2) 16M x 36
72MB	(2) 4M x 36	(2) 32M x 36	NONE
72MB	(2) 32M x 36	(2) 2M x 36	(2) 2M x 36
72MB	(2) 32M x 36	(2) 4M x 36	NONE
80MB	(2) 8M x 36	(2) 16M x 36	(2) 16M x 36
80MB	(2) 8M x 36	(2) 32M x 36	NONE
80MB	(2) 32M x 36	(2) 4M x 36	(2) 4M x 36
80MB	(2) 32M x 36	(2) 8M x 36	NONE
96MB	(2) 16M x 36	(2) 16M x 36	(2) 16M x 36
96MB	(2) 16M x 36	(2) 32M x 36	NONE
96MB	(2) 32M x 36	(2) 8M x 36	(2) 8M x 36
96MB	(2) 32M x 36	(2) 16M x 36	NONE
128MB	(2) 32M x 36	(2) 16M x 36	(2) 16M x 36
128MB	(2) 32M x 36	(2) 32M x 36	NONE
130MB	(2) 1M x 36	(2) 32M x 36	(2) 32M x 36
132MB	(2) 2M x 36	(2) 32M x 36	(2) 32M x 36
136MB	(2) 4M x 36	(2) 32M x 36	(2) 32M x 36
144MB	(2) 8M x 36	(2) 32M x 36	(2) 32M x 36
160MB	(2) 16M x 36	(2) 32M x 36	(2) 32M x 36
192MB	(2) 32M x 36	(2) 32M x 36	(2) 32M x 36

CACHE CONFIGURATION	
Size	Cache
256KB	(8) 32K x 8
512KB	(8) 64K x 8

CACHE JUMPER CONFIGURATION		
Size	JP6	JP7
256KB	pins 2 & 3 closed	pins 1 & 2 closed
512KB	pins 2 & 3 closed	pins 2 & 3 closed
NONE	pins 1 & 2 closed	pins 1 & 2 closed

Continued on next page...

ASUS COMPUTER INTERNATIONAL

PCI/E - P5MP4

... continued from previous page

FLASH EPROM CONFIGURATION		
Flash BIOS setting	JP2	JP3
í Non-programmable EPROM & 5V flash chip	pins 1 & 2 closed	pins 1 & 2 closed
12V flash programming	pins 2 & 3 closed	pins 2 & 3 closed

PCI EDGE TRIGGER INTERRUPT CONFIGURATION				
IRQ	INT A (PCI1)	INT B (PCI2)	INTC (PCI3)	INT D (PCI4)
IRQ5	JP11/pins 1 & 2	JP11/pins 3 & 4	JP12/pins 1 & 2	JP12/pins 2 & 3
IRQ9	JP13/pins 1 & 2	JP13/pins 3 & 4	JP14/pins 1 & 2	JP14/pins 2 & 3
IRQ11	JP15/pins 1 & 2	JP15/pins 3 & 4	JP16/pins 1 & 2	JP16/pins 2 & 3
IRQ14	JP17/pins 1 & 2	JP17/pins 3 & 4	JP18/pins 1 & 2	JP18/pins 2 & 3
IRQ15	JP19/pins 1 & 2	JP19/pins 3 & 4	JP20/pins 1 & 2	JP20/pins 2 & 3

Note: Pins designated should be in the closed position. Select only on interrupt for one INT for each card installed.

EISA BUS INTERRUPT CONFIGURATION	
IRQ	Setting
í IRQ5	JP11 & JP12/pins 2 & 3 closed
IRQ9	JP13 & JP14/pins 2 & 3 closed
IRQ11	JP15 & JP16/pins 2 & 3 closed
IRQ14	JP17 & JP18/pins 2 & 3 closed
IRQ15	JP19 & JP20/pins 2 & 3 closed

MISCELLANEOUS TECHNICAL NOTES
The default for standard (level trigger) interrupt is IRQ5. Each card installed must have a different IRQ.