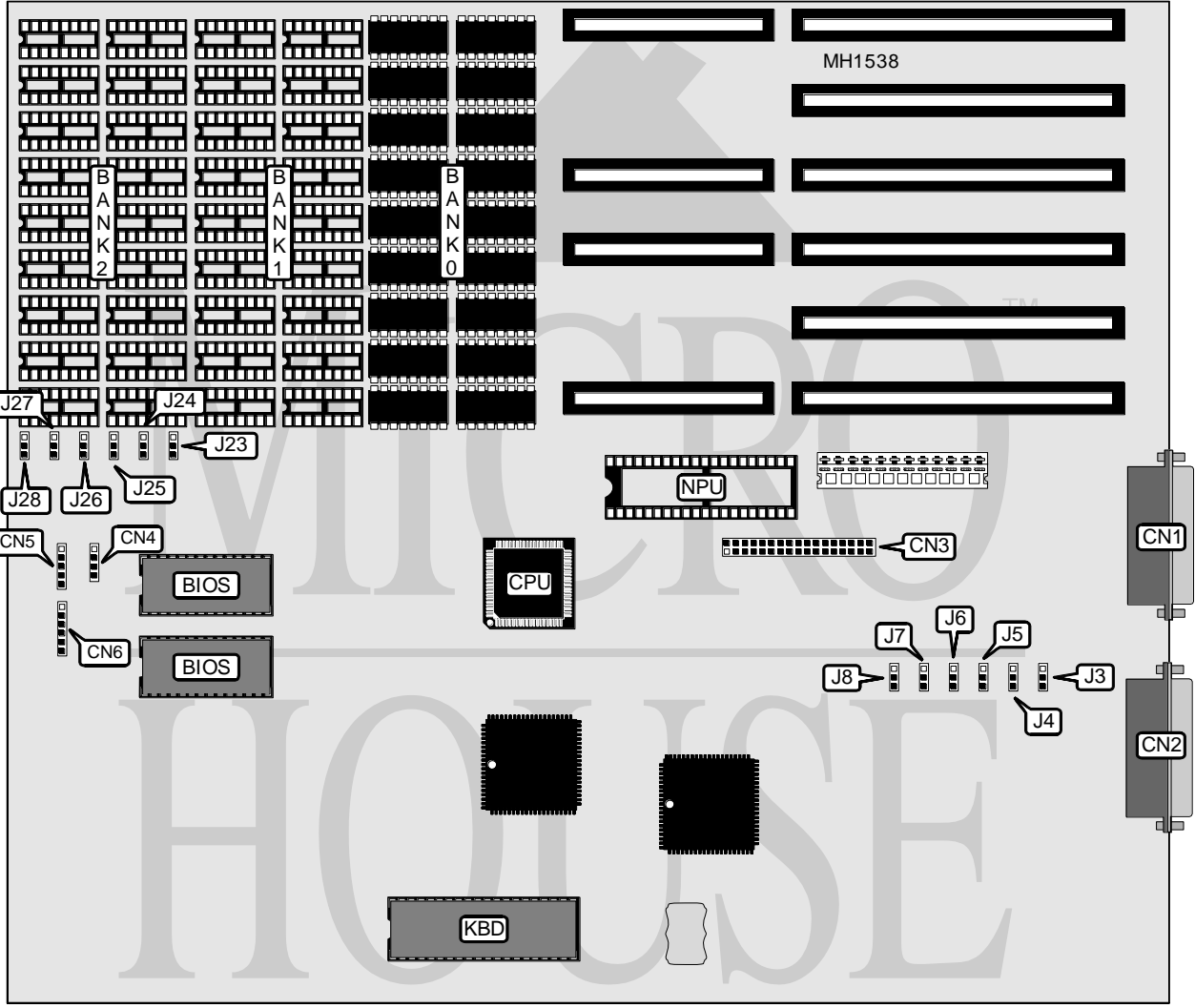


LEADING EDGE PRODUCTS, INC.
MODEL D2

Processor 80286
Processor Speed 8/10MHz
Chip Set Zymos
Max. onboard DRAM 1MB
Cache None
BIOS Leading Edge
Dimensions 330mm x 330mm
I/O Options Floppy drive interface, parallel port, serial port
NPU Options 80287



CONNECTIONS			
Purpose	Location	Purpose	Location
Parallel port	CN1	Speaker	CN4
Serial port (25 pin)	CN2	Power LED & keylock	CN5
Floppy drive interface	CN3	Keyboard connector	CN6

Continued on next page . . .

LEADING EDGE PRODUCTS, INC.

MODEL D2

... continued from previous page

USER CONFIGURABLE SETTINGS		
Function	Jumper	Position
í Floppy drive interface enabled	J7	Closed
Floppy drive interface disabled	J7	Open
í Floppy drive interface address select primary	J8	pins 2 & 3 closed
Floppy drive interface address select secondary	J8	pins 1 & 2 closed
í BIOS select 1 wait state	J25	pins 2 & 3 closed
BIOS select 0 wait states	J25	pins 1 & 2 closed
í CPU speed select 10MHz	J26	pins 2 & 3 closed
CPU speed select 8MHz	J26	pins 1 & 2 closed
í Monitor type select monochrome	J27	pins 2 & 3 closed
Monitor type select color	J27	pins 1 & 2 closed
í Factory configured - do not alter	J28	pins 2 & 3 closed

DRAM CONFIGURATION					
Size	Bank 0	Bank 1	Bank 2	J23	J24
640KB	(16) 41256	(16) 4164	NONE	pins 2 & 3	pins 2 & 3
1024KB	(16) 41256	(16) 41256	NONE	pins 2 & 3	pins 1 & 2
1152KB	(16) 41256	(16) 4164	(16) 41256	pins 1 & 2	pins 2 & 3

Note: Pins designated should be in the closed position.

SERIAL PORT CONFIGURATION				
COM1	COM2	IRQ	J5	J6
í COM1	Disabled	4	pins 1 & 2 closed	pins 1 & 2 closed
COM1	Disabled	3	pins 1 & 2 closed	pins 2 & 3 closed
Disabled	COM2	3	pins 2 & 3 closed	pins 2 & 3 closed
Disabled	COM2	4	pins 2 & 3 closed	pins 1 & 2 closed
Disabled	Disabled	N/A	pins 1, 2 & 3 closed	N/A

PARALLEL PORT CONFIGURATION				
LPT1	LPT2	IRQ	J3	J4
í LPT1	Disabled	7	pins 1 & 2 closed	pins 1 & 2 closed
LPT1	Disabled	5	pins 2 & 3 closed	pins 1 & 2 closed
Disabled	LPT2	5	pins 2 & 3 closed	pins 2 & 3 closed
Disabled	LPT2	7	pins 1 & 2 closed	pins 2 & 3 closed
Disabled	Disabled	N/A	N/A	pins 1, 2, & 3 closed