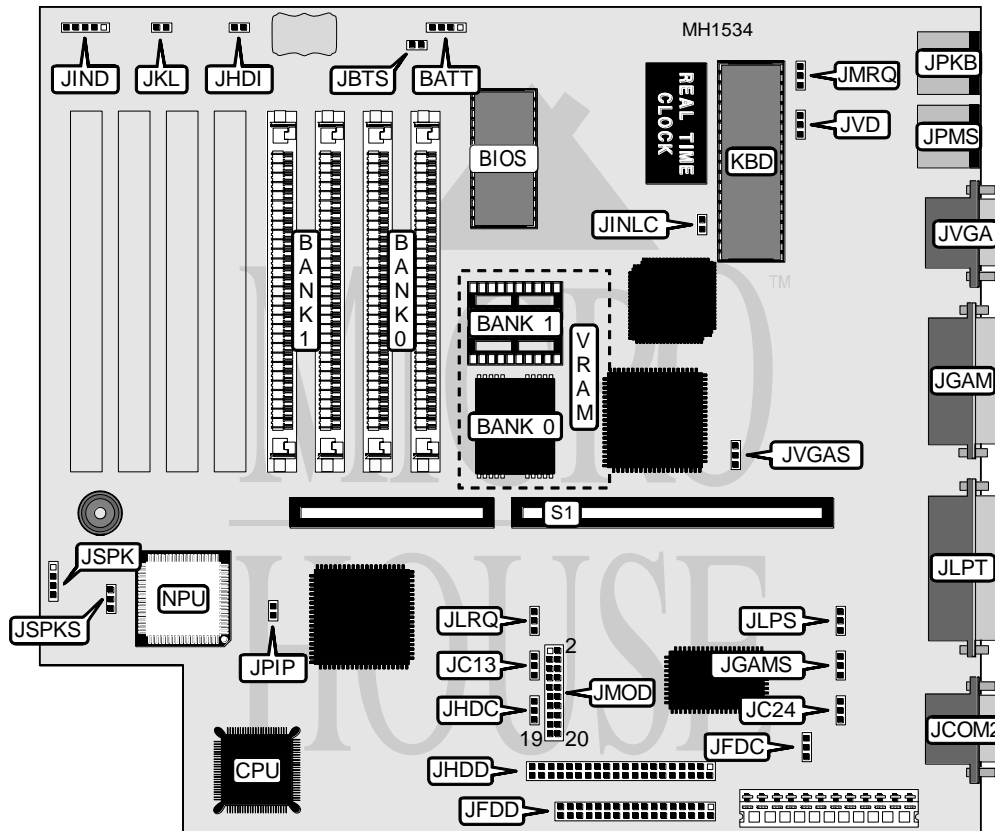


# PACKARD BELL PB301 386SXII E/386SXII ES (REV. B)

<b>Processor</b>	80386DX
<b>Processor Speed</b>	16/20MHz
<b>Chip Set</b>	ACC
<b>Max. onboard DRAM</b>	16MB
<b>SRAM Cache</b>	None
<b>BIOS</b>	Phoenix
<b>Dimensions</b>	220mm x 220mm
<b>I/O Options</b>	Fax/modem daughterboard, floppy drive interface, game port, IDE interface, parallel port, PS/2 keyboard port, PS/2 mouse port, serial port, VGA port
<b>NPU Options</b>	80837SX



CONNECTIONS			
Purpose	Location	Purpose	Location
External battery	BATT	Parallel port	JLPT
Serial port	JCOM2	Proprietary modem daughterboard	JMOD
Floppy drive interface	JFDD	PS/2 keyboard	JKPB
Game port	JGAM	PS/2 mouse	JPMS
IDE interface	JHDD	Speaker	JSPK
IDE interface LED	JHDI	VGA port	JVGA
Front panel connector	JIND	Riser card	S1
Keylock	JKL		

Continued on next page . . .

# PACKARD BELL

## PB301 386SXII E/386SXII ES (REV. B)

... continued from previous page

USER CONFIGURABLE SETTINGS		
Function	Jumper/Switch	Position
í Onboard battery enabled	JBTS	Open
Onboard battery disabled	JBTS	Closed
í Onboard floppy drive interface select primary address	JFDC	pins 1 & 2 closed
Onboard floppy drive interface select secondary address	JFDC	pins 2 & 3 closed
í Onboard Game port enabled	JGAMS	pins 1 & 2 closed
Onboard Game port disabled	JGAMS	pins 2 & 3 closed
í Onboard IDE interface select primary address	JHDC	pins 1 & 2 closed
Onboard IDE interface select secondary address	JHDC	pins 2 & 3 closed
í PS/2 mouse port enabled (IRQ12)	JMRQ	Closed
PS/2 mouse port disabled	JMRQ	Open
í Pipeline mode enabled	JPIP	Closed
Pipeline mode disabled	JPIP	Open
í Onboard speaker enabled	JSPKS	pins 1 & 2 closed
Onboard speaker disabled	JSPKS	pins 2 & 3 closed
í Monitor type select color	JVD	Closed
Monitor type select monochrome	JVD	Open

Note: Some boards have the game port jumper (JGAMS) reversed.

DRAM CONFIGURATION				
Size	Bank 0	Bank 1	Bank 2	Bank 3
1MB	(4) 44256	(4) 44256	NONE	NONE
1.5MB	(4) 44256	(4) 44256	(2) 256K x 9	NONE
2MB	(4) 44256	(4) 44256	(2) 256K x 9	(2) 256K x 9
3MB	(4) 44256	(4) 44256	(2) 1M x 9	NONE
3,5MB	(4) 44256	(4) 44256	(2) 1M x 9	(2) 256K x 9
5MB	(4) 44256	(4) 44256	(2) 1M x 9	(2) 1M x 9

Note: 4M x 9 SIMMs are not supported. Banks 0 & 1 are soldered to the board and should not be altered.

VRAM CONFIGURATION		
Size	Bank 0	Bank 1
512KB	(2) 256K x 9	NONE
1MB	(2) 256K x 9	(2) 256K x 9
2MB	(2) 1M x 9	NONE
2.5MB	(2) 1M x 9	(2) 256K x 9
4MB	(2) 1M x 9	(2) 1M x 9
8MB	(2) 4M x 9	NONE
12MB	(2) 4M x 9	(2) 1M x 9
16MB	(2) 4M x 9	(2) 4M x 9

Note: Board contains traces for additional SIMM banks. Additional SIMM sockets will not function if installed.

Continued on next page . . .

# PACKARD BELL

## PB301 386SXII E/386SXII ES (REV. B)

... continued from previous page

VIDEO CONFIGURATION					
Mode	IRQ	Monitor	JINLC	JVGAS	JVRQ
í Enabled	IRQ9	Interlaced	Closed	pins 1 & 2	Closed
Enabled	None	Interlaced	Closed	pins 1 & 2	Open
Enabled	IRQ9	Non-Interlaced	Open	pins 1 & 2	Closed
Enabled	None	Non-Interlaced	Open	pins 1 & 2	Open
Disabled	N/A	N/A	N/A	pins 2 & 3	N/A

SERIAL PORT CONFIGURATION					
Modem (JMOD)	Port B (JCOM2)	ISA Modem	JC13	JC24	JMODJ
Disabled	COM2	None	N/A	pins 1 & 2	Closed
Disabled	COM2	COM1	pins 2 & 3	pins 1 & 2	Closed
Disabled	COM2	COM3	pins 1 & 2	pins 1 & 2	Closed
COM1	COM2	None	pins 1 & 2	pins 1 & 2	Open
COM3	COM2	None	pins 2 & 3	pins 1 & 2	Open
Disabled	COM4	None	N/A	pins 2 & 3	Closed
Disabled	COM4	COM1	pins 2 & 3	pins 2 & 3	Closed
Disabled	COM4	COM3	pins 1 & 2	pins 2 & 3	Closed
COM1	COM4	None	pins 1 & 2	pins 2 & 3	Open
COM3	COM4	None	pins 2 & 3	pins 2 & 3	Open

Note: \* JMODJ is a special block placed on JMOD itself, connecting pins 10 and 11 together diagonally. Permanent damage to the board will occur if the JMODJ jumper is installed improperly. Pins designated should be in the closed position.

PARALLEL PORT CONFIGURATION			
LPT	IRQ	JLPS	JLRQ
í LPT1	IRQ7	pins 1 & 2 closed	pins 1 & 2 closed
LPT1	IRQ5	pins 1 & 2 closed	pins 2 & 3 closed
LPT2	IRQ7	pins 2 & 3 closed	pins 1 & 2 closed
LPT2	IRQ5	pins 2 & 3 closed	pins 2 & 3 closed