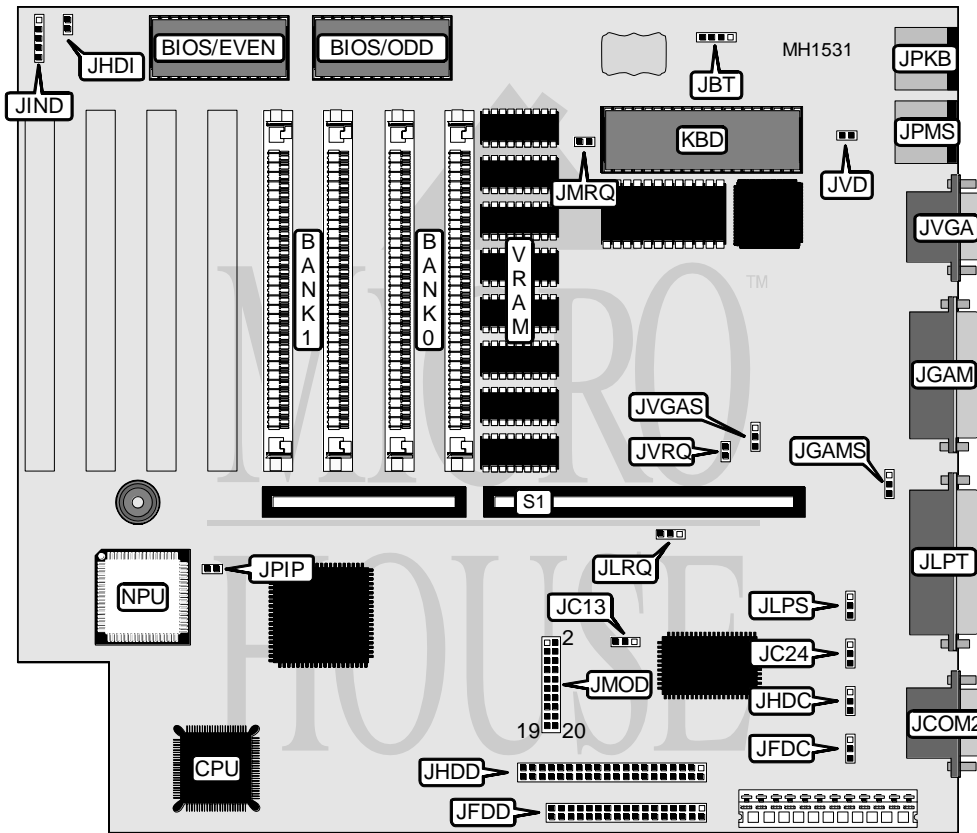


PACKARD BELL PB300/PB320 (REV. B)

Processor	80386SX
Processor Speed	25MHz
Chip Set	ACC
Max. onboard DRAM	5MB
Cache	None
BIOS	Phoenix
Dimensions	230mm x 220mm
I/O Options	Fax/modem daughterboard, floppy drive interface, game port, IDE interface, parallel port, PS/2 keyboard port, PS/2 mouse port, serial port, VGA port
NPU Options	80387SX



CONNECTIONS			
Purpose	Location	Purpose	Location
External battery	JBT	Parallel port	JLPT
Serial port	JCOM2	Proprietary modem daughterboard	JMOD
Floppy drive interface	JFDD	PS/2 keyboard	JPKB
Game port	JGAM	PS/2 mouse	JPMS
IDE interface	JHDD	VGA port	JVGA
IDE interface LED	JHDI	Riser card	S1
Front panel connector	JIND		

Continued on next page . . .

PACKARD BELL

PB300/PB320 (REV. B)

... continued from previous page

USER CONFIGURABLE SETTINGS		
Function	Jumper/Switch	Position
í Onboard floppy drive interface enabled	JFDC	pins 1 & 2 closed
Onboard floppy drive interface disabled	JFDC	pins 2 & 3 closed
í Onboard Game port disabled	JGAMS	pins 1 & 2 closed
Onboard Game port enabled	JGAMS	pins 2 & 3 closed
í Onboard IDE interface enabled	JHDC	pins 1 & 2 closed
Onboard IDE interface disabled	JHDC	pins 2 & 3 closed
í PS/2 mouse port enabled (IRQ12)	JMRQ	Closed
PS/2 mouse port disabled	JMRQ	Open
í Pipeline mode disabled	JPIP	Open
Pipeline mode enabled	JPIP	Closed
í Monitor type select color	JVD	pins 2 & 3 closed
Monitor type select monochrome	JVD	pins 1 & 2 closed

ONBOARD VIDEO CONFIGURATION			
Onboard Video	IRQ	JVGAS	JVRQ
í Enabled	IRQ9	pins 1 & 2 closed	Closed
Enabled	None	pins 1 & 2 closed	Open
Disabled	N/A	pins 2 & 3 closed	N/A

SERIAL PORT CONFIGURATION					
Modem (JMOD)	Port B (JCOM2)	ISA Modem	JC13	JC24	JMOD
Disabled	COM2	None	N/A	pins 1 & 2	Closed
Disabled	COM2	COM1	pins 2 & 3	pins 1 & 2	Closed
Disabled	COM2	COM3	pins 1 & 2	pins 1 & 2	Closed
COM1	COM2	None	pins 1 & 2	pins 1 & 2	Daughterboard
COM3	COM2	None	pins 2 & 3	pins 1 & 2	Daughterboard
Disabled	COM4	None	N/A	pins 2 & 3	Closed
Disabled	COM4	COM1	pins 2 & 3	pins 2 & 3	Closed
Disabled	COM4	COM3	pins 1 & 2	pins 2 & 3	Closed
COM1	COM4	None	pins 1 & 2	pins 2 & 3	Daughterboard
COM3	COM4	None	pins 2 & 3	pins 2 & 3	Daughterboard

Note: JMOD is closed using a special jumper, JMODJ, that connects pins 10 and 11. Permanent damage to the board will occur if the JMODJ jumper is installed improperly.
Pins designated should be in the closed position.

Continued on next page ...

PACKARD BELL

PB300/PB320 (REV. B)

... continued from previous page

PARALLEL PORT CONFIGURATION			
LPT	IRQ	JLPS	JLRQ
í LPT1	IRQ7	pins 1 & 2 closed	pins 2 & 3 closed
LPT1	IRQ5	pins 1 & 2 closed	pins 1 & 2 closed
LPT2	IRQ7	pins 2 & 3 closed	pins 2 & 3 closed
LPT2	IRQ5	pins 2 & 3 closed	pins 1 & 2 closed

DRAM CONFIGURATION		
Size	Bank 0	Bank 1
512KB	(2) 256K x 9	NONE
1MB	(2) 256K x 9	(2) 256K x 9
2MB	(2) 1M x 9	NONE
2.5MB	(2) 1M x 9	(2) 256K x 9
4MB	(2) 1M x 9	(2) 1M x 9
8MB	(2) 4M x 9	NONE
12MB	(2) 4M x 9	(2) 1M x 9
16MB	(2) 4M x 9	(2) 4M x 9

Note: 256K x 9 SIMMs may not be supported on certain boards. Board contains traces for additional SIMM banks. Additional SIMM sockets will not function if installed. A few boards had all 8 SIMM sockets factory installed, in which case BANKS 2 & 3 are non-functional.