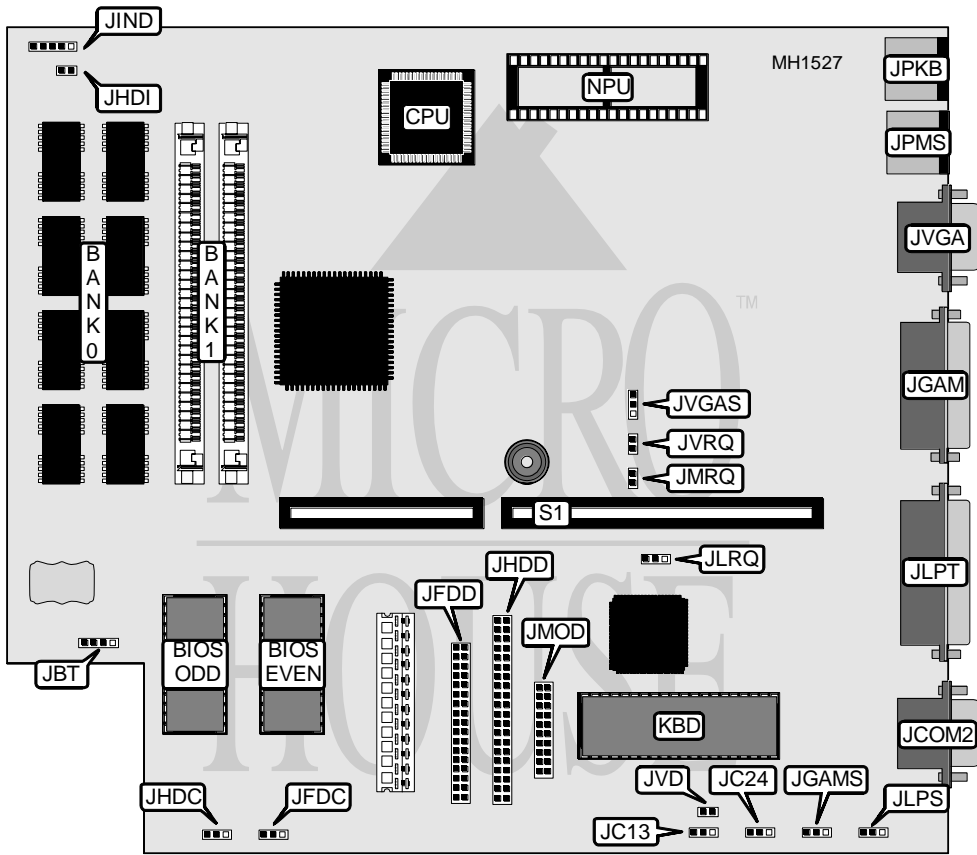


PACKARD BELL P B 100

Processor 80286
Processor Speed 16MHz
Chip Set TI
Max. onboard DRAM 3MB
SRAM Cache None
BIOS Phoenix
Dimensions 240mm x 240mm
I/O Options Fax/modem daughterboard, floppy drive interface, game port, IDE interface, parallel port, PS/2 keyboard port, PS/2 mouse port, serial port, VGA port
NPU Options 80287



CONNECTIONS			
Purpose	Location	Purpose	Location
External battery	JBT	Parallel port	JLPT
Serial port	JCOM2	Proprietary modem daughterboard	JMOD
Floppy drive interface	JFDD	PS/2 keyboard	JPKB
Game port	JGAM	PS/2 mouse	JPMS
IDE interface	JHDD	VGA port	JVGA
IDE interface LED	JHDI	Riser card	S1
Front panel connector	JIND		

Continued on next page . . .

PACKARD BELL

P B 1 0 0

... continued from previous page

USER CONFIGURABLE SETTINGS		
Function	Jumper/Switch	Position
í Onboard game port enabled	JGAMS	pins 1 & 2 closed
Onboard game port disabled	JGAMS	pins 2 & 3 closed
í Monitor type select color	JVD	Closed
Monitor type select monochrome	JVD	Open
í PS/2 mouse port enabled (IRQ12)	JMRQ	Closed
PS/2 mouse port disabled	JMRQ	Open
í Onboard IDE interface enabled	JHDC	pins 1 & 2 closed
Onboard IDE interface disabled	JHDC	pins 2 & 3 closed
í Onboard floppy drive interface enabled	JFDC	pins 1 & 2 closed
Onboard floppy drive interface disabled	JFDC	pins 2 & 3 closed

SERIAL PORT CONFIGURATION					
Modem (JMOD)	Port B (JCOM2)	ISA Modem	JC13	JC24	JMODJ
Disabled	COM2	None	N/A	pins 1 & 2	Closed
Disabled	COM2	COM1	pins 2 & 3	pins 1 & 2	Closed
Disabled	COM2	COM3	pins 1 & 2	pins 1 & 2	Closed
COM1	COM2	None	pins 1 & 2	pins 1 & 2	Open
COM3	COM2	None	pins 2 & 3	pins 1 & 2	Open
Disabled	COM4	None	N/A	pins 2 & 3	Closed
Disabled	COM4	COM1	pins 2 & 3	pins 2 & 3	Closed
Disabled	COM4	COM3	pins 1 & 2	pins 2 & 3	Closed
COM1	COM4	None	pins 1 & 2	pins 2 & 3	Open
COM3	COM4	None	pins 2 & 3	pins 2 & 3	Open

Note: * JMODJ is a special block placed on JMOD itself, connecting pins 10 and 11 together diagonally. Permanent damage to the board will occur if the JMODJ jumper is installed improperly. Pins designated should be in the closed position.

PARALLEL PORT CONFIGURATION			
LPT	IRQ	JLPS	JLRQ
í LPT1	IRQ7	pins 1 & 2 closed	pins 1 & 2 closed
LPT1	IRQ5	pins 1 & 2 closed	pins 2 & 3 closed
LPT2	IRQ7	pins 2 & 3 closed	pins 1 & 2 closed
LPT2	IRQ5	pins 2 & 3 closed	pins 2 & 3 closed

Continued on next page . . .

PACKARD BELL

P B 1 0 0

... continued from previous page

VIDEO CONFIGURATION			
Mode	IRQ	JVGAS	JVRQ
í Enabled	IRQ9	pins 1 & 2 closed	Closed
Enabled	None	pins 1 & 2 closed	Open
Disabled	N/A	pins 2 & 3 closed	N/A

DRAM CONFIGURATION		
Size	Bank 0	Bank 1
1MB	(8) 44256	NONE
3MB	(8) 44256	(2) 1M x 9
Note: 256K x 9 SIMMs are not supported. Bank 0 is soldered to the board and should not be altered.		