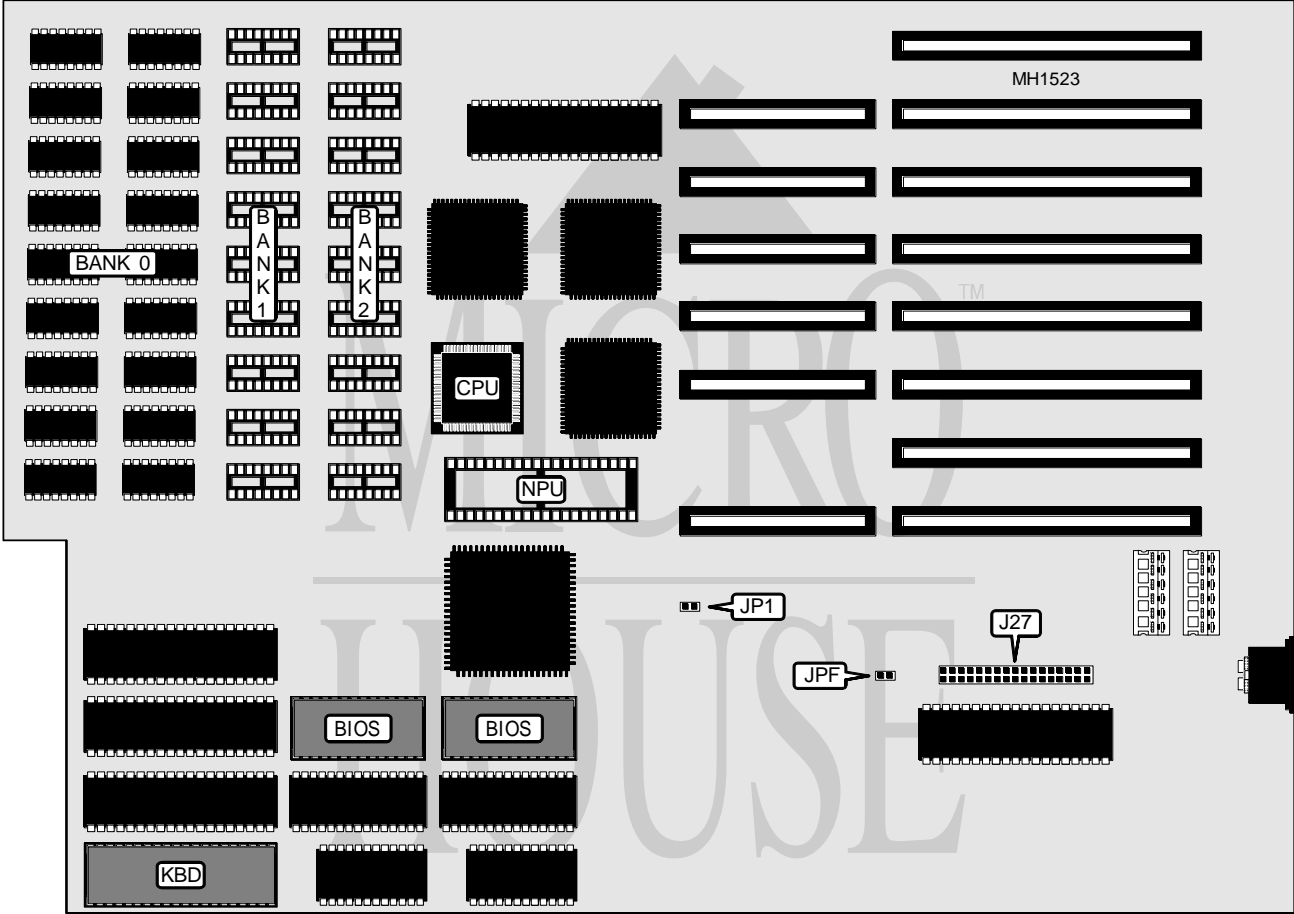


# PACKARD BELL P B 2 8 6 B

**Processor** 80286  
**Processor Speed** 12MHz  
**Chip Set** C & T  
**Max. Onboard DRAM** 1MB  
**Cache** None  
**BIOS** Phoenix  
**Dimensions** 300mm x 260mm  
**I/O Options** None  
**NPU Options** 80287



CONNECTIONS			
Purpose	Location	Purpose	Location
Speaker	J19	Floppy drive interface	J27
Power LED & keylock	J20	Reset	J31

Continued on next page . . .

## PACKARD BELL

## P B 2 8 6 B

... continued from previous page

## USER CONFIGURABLE SETTINGS

Function	Jumper	Position
í Monitor type select color	JP1	Closed
Monitor type select monochrome	JP1	Open
í Floppy drive interface disabled	JPF	Open
Floppy drive interface enabled	JPF	Closed

## DRAM CONFIGURATION

Size	BANK 0	BANK 1	BANK 2
512KB	(18) 41256	NONE	NONE
768KB	(18) 41256	(9) 41256	NONE
1MB	(18) 41256	(9) 41256	(9) 41256

Note: Bank 0 is soldered to the main board, and should not be altered.