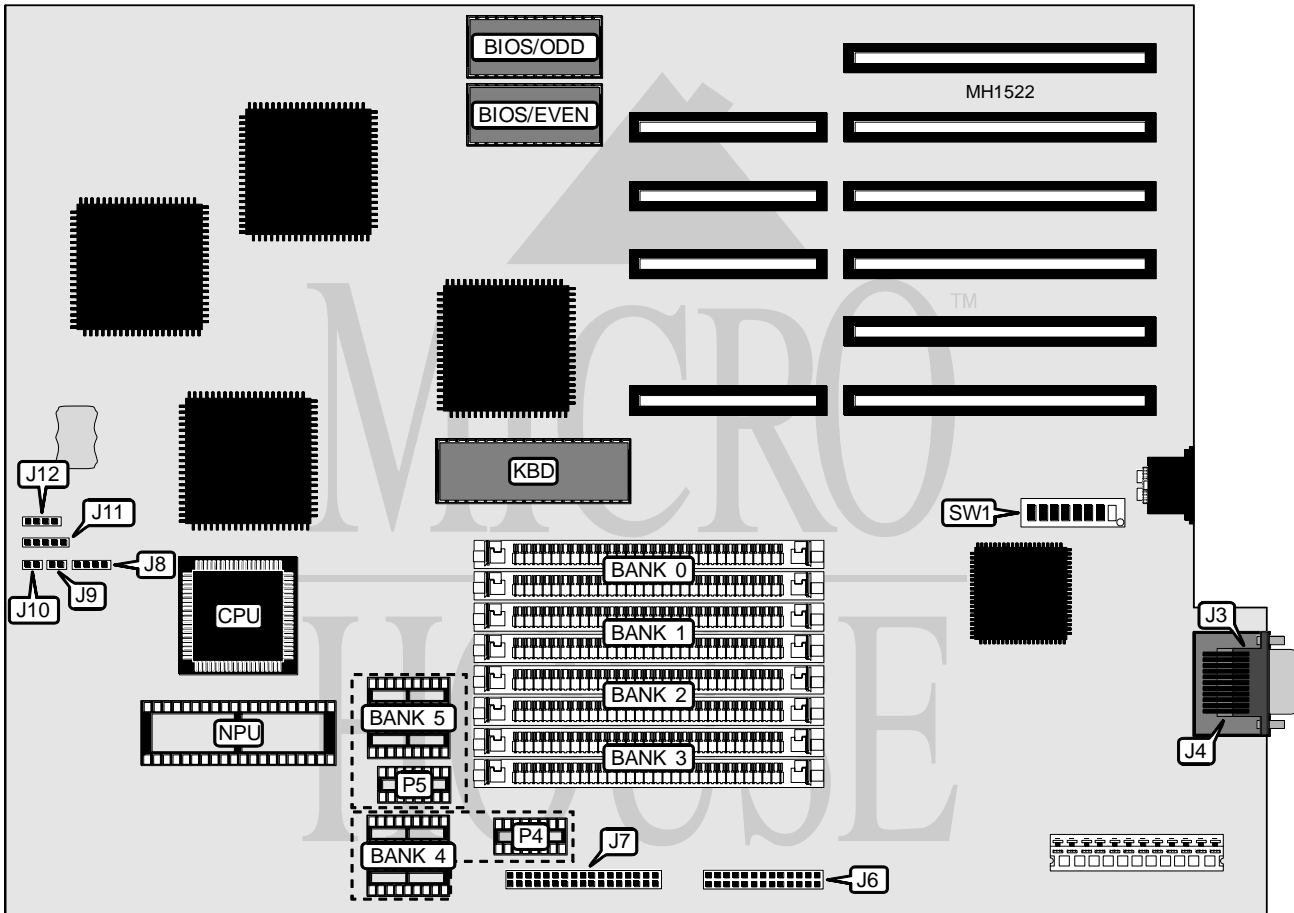


# PACKARD BELL P B 1 0 0 0

<b>Processor</b>	80286
<b>Processor Speed</b>	5/8/10MHz
<b>Chip Set</b>	C & T
<b>Max. Onboard DRAM</b>	8MB
<b>Cache</b>	None
<b>BIOS</b>	Phoenix
<b>Dimensions</b>	300mm x 260mm
<b>I/O Options</b>	Floppy drive interface, parallel port, serial ports (2)
<b>NPU Options</b>	80287



CONNECTIONS			
Purpose	Location	Purpose	Location
Serial port 1	J3	Speaker	J9
Serial port 2	J4	Reserved for future use	J10
Parallel port	J6	Turbo LED & Keylock	J11
Floppy drive interface	J7	External battery	J12
Turbo switch	J8		

Continued on next page . . .

# PACKARD BELL

## P B 1 0 0 0

... continued from previous page

USER CONFIGURABLE SETTINGS		
Function	Switch	Position
í Monitor type select color	SW1/1	On
Monitor type select monochrome	SW1/1	Off
í BIOS type select 27256	SW1/2	On
BIOS type select 27128	SW1/2	Off
í Floppy drive interface address select primary (3F0-3F7h)	SW1/5	On
Floppy drive interface address select secondary (370-377h)	SW1/5	Off
í Factory configured - do not alter	SW1/6	Off
í Factory configured - do not alter	SW1/7	On
í Factory configured - do not alter	SW1/8	On

SYSTEM SPEED CONFIGURATION		
Speed	SW1/3	SW1/4
í High (10MHz)	On	On
Medium (8MHz)	Off	On
Low (5MHz)	Off	Off

DRAM CONFIGURATION								
Size	BANK 0	BANK 1	BANK 2	BANK 3	BANK 4	P4	BANK 5	P5
512KB	(2)64Kx9	(2)64Kx9	(2)64Kx9	(2)64Kx9	NONE	NONE	NONE	NONE
512KB	(2)256Kx9	NONE	NONE	NONE	NONE	NONE	NONE	NONE
640KB	(2)64Kx9	(2)64Kx9	(2)64Kx9	(2)64Kx9	(2)4464	(1)4164	(2)4464	(1)4164
640KB	(2)256Kx9	NONE	NONE	NONE	(2)4464	(1)4164	(2)4464	(1)4164
1MB	(2)256Kx9	(2)256Kx9	NONE	NONE	NONE	NONE	NONE	NONE
2MB	(2)256Kx9	(2)256Kx9	(2)256Kx9	(2)256Kx9	NONE	NONE	NONE	NONE
2MB	(2)1Mx9	NONE	NONE	NONE	NONE	NONE	NONE	NONE
3MB	(2)256Kx9	(2)256Kx9	(2)1Mx9	NONE	NONE	NONE	NONE	NONE
4MB	(2)1Mx9	(2)1Mx9	NONE	NONE	NONE	NONE	NONE	NONE
5MB	(2)256Kx9	(2)256Kx9	(2)1Mx9	(2)1Mx9	NONE	NONE	NONE	NONE
6MB	(2)1Mx9	(2)1Mx9	(2)1Mx9	NONE	NONE	NONE	NONE	NONE
8MB	(2)1Mx9	(2)1Mx9	(2)1Mx9	(2)1Mx9	NONE	NONE	NONE	NONE

Note: Banks 4 and 5 must be empty when 1MB or more is installed.