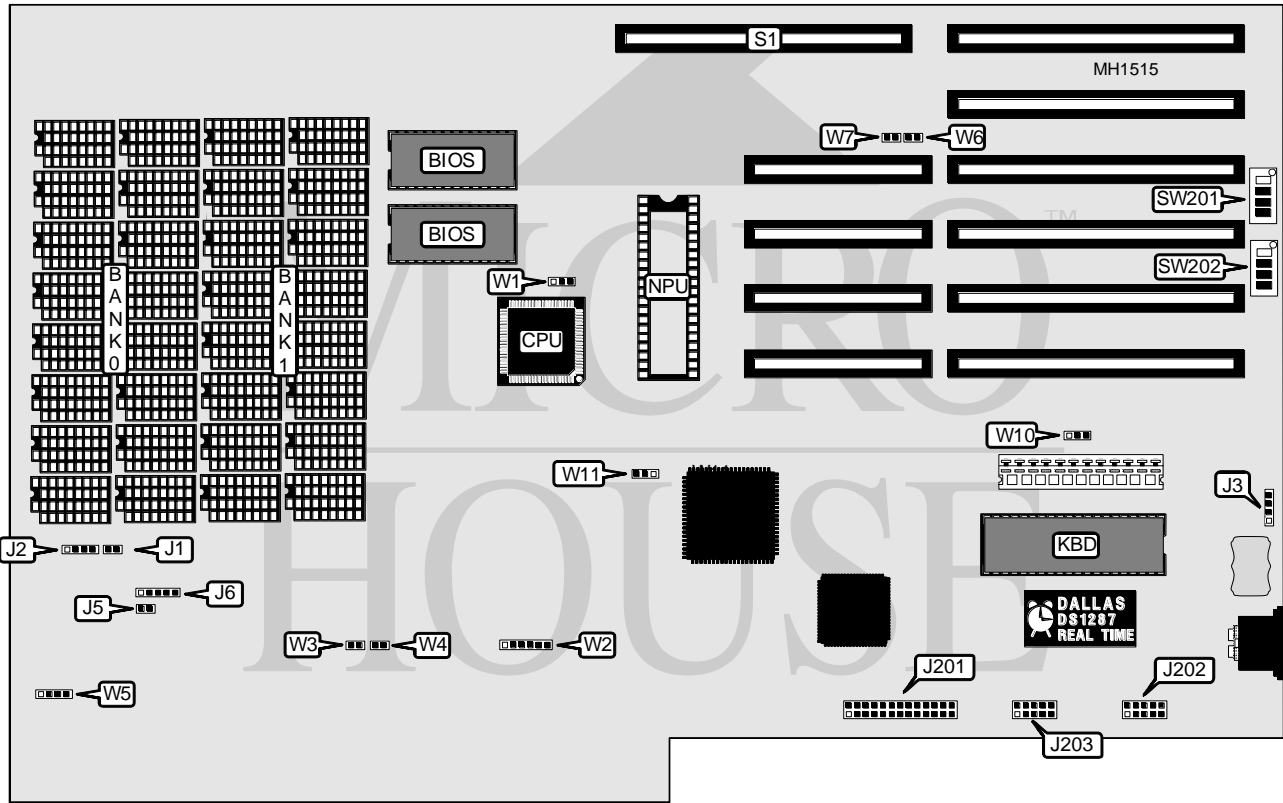


NORTHGATE COMPUTER SYSTEMS, INC. SUPERMICRO 286

Processor	80286
Processor Speed	12/16/20MHz
Chip Set	VLSI
Max. Onboard DRAM	4MB
SRAM Cache	None
BIOS	Award
Dimensions	355mm x 304mm
I/O Options	16-bit onboard bus memory slot, parallel port, serial port (2)
NPU Options	80287



CONNECTIONS			
Purpose	Location	Purpose	Location
Reset switch	J1	Parallel port	J201
Speaker	J2	Serial port 2 (COM2)	J202
External battery	J3	Serial port 1 (COM1)	J203
Turbo LED	J5	16-bit onboard bus memory slot	S1
Power LED & keylock	J6		

Continued on next page . . .

NORTHGATE COMPUTER SYSTEMS, INC.

SUPERMICRO 286

... continued from previous page

USER CONFIGURABLE SETTINGS		
Function	Jumper/Switch	Position
í RAM select 0 wait states	W3	On
RAM select 1 wait state	W3	Off
í ROM select 0 wait states	W4	On
ROM select 1 wait state	W4	Off
í Monitor type select color	W10	pins 2 & 3 closed
Monitor type select monochrome	W10	pins 1 & 2 closed
í CPU speed select high	W11	Open
CPU speed select low	W11	pins 2 & 3 closed
CPU speed select keyboard control	W11	pins 1 & 2 closed

DRAM CONFIGURATION				
Size	Bank 0	Bank 1	W6	W7
512KB	(18) 41256	NONE	Off	On
1MB	(18) 41256	(18) 41256	Off	Off
2MB	(18) 411000	NONE	On	On
4MB	(18) 411000	(18) 411000	On	Off

MEMORY SPEED CONFIGURATION	
Speed	W5
60ns	pins 1 & 2 closed
80ns	pins 1 & 2, 3 & 4 closed
100ns	pins 2 & 3 closed

Note: Speed is factory configured and should not be altered.

NPU SPEED CONFIGURATION			
Speed	OSC	W1	W2
7.15MHz	7.15MHz	pins 1 & 2 closed	pins 3 & 4 closed
7.15MHz	21.45MHz	pins 2 & 3 closed	pins 3 & 4 closed
10.00MHz	10.00MHz	pins 1 & 2 closed	Pins 5 & 6 closed
10.00MHz	30.00MHz	pins 2 & 3 closed	Pins 5 & 6 closed
14.32MHz	14.32MHz	pins 1 & 2 closed	pins 1 & 2 closed
14.32MHz	42.96MHz	pins 2 & 3 closed	pins 1 & 2 closed

Continued on next page . . .

NORTHGATE COMPUTER SYSTEMS, INC.

SUPERMICRO 286

... continued from previous page

SERIAL PORT CONFIGURATION							
Port 1 (J203)		Port 2 (J202)		SW201/1	SW201/2	SW202/1	SW202/2
COM1/IRQ4		COM2/IRQ3		Off	Off	On	On
COM1/IRQ4		Disabled		Off	On	On	Off
Disabled		COM2/IRQ3		Off	On	Off	On
Disabled		Disabled		On	On	N/A	N/A

PARALLEL PORT CONFIGURATION							
LPT		IRQ		SW201/3	SW201/4	SW202/3	SW202/4
LPT1		IRQ5		Off	Off	On	Off
LPT1		IRQ7		Off	Off	Off	On
LPT2		IRQ5		Off	On	On	Off
LPT2		IRQ7		Off	On	Off	On
Disabled		N/A		On	N/A	N/A	N/A