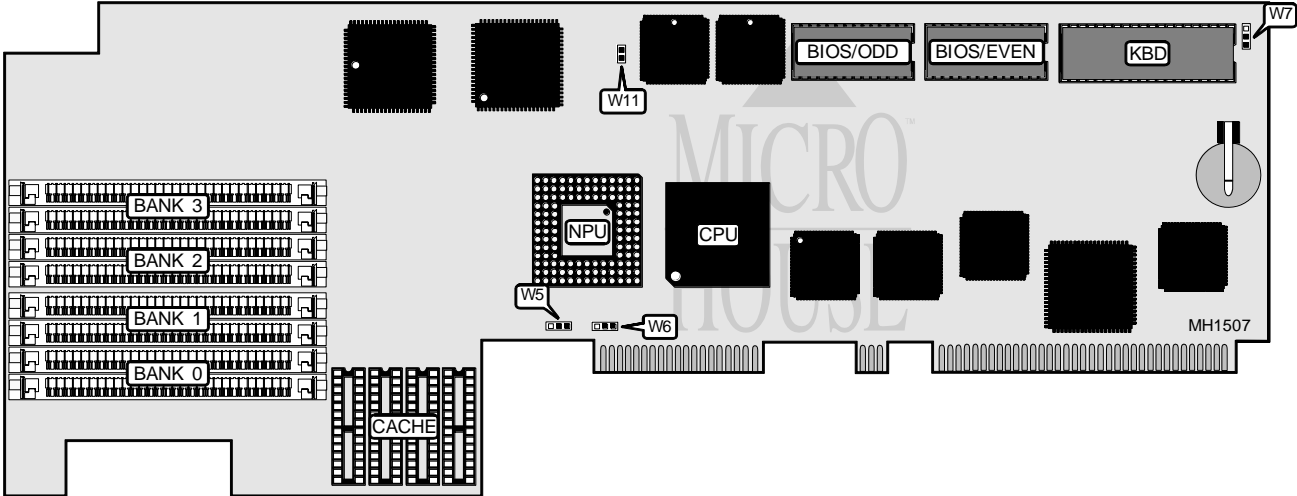


# WELLS AMERICAN CORPORATION COMPUSTAR 100

<b>Processor</b>	80386DX
<b>Processor Speed</b>	16/20/25MHz
<b>Chip Set</b>	C & T
<b>Max. Onboard DRAM</b>	16MB
<b>Cache</b>	32KB
<b>BIOS</b>	Award/Wells American
<b>Dimensions</b>	330mm x 127mm
<b>I/O Options</b>	None
<b>NPU Options</b>	80387DX/3167



**MISCELLANEOUS NOTE**  
The 80286 processor board is installed in a passive backplane board.

*Continued on next page . . .*

# WELLS AMERICAN CORPORATION

## COMPUSTAR II

### USER CONFIGURABLE SETTINGS

Function	Jumper/Switch	Position
í Bus select PS/2	W1 & W2	pins 1 & 2 closed
Bus select AT	W1 & W2	pins 2 & 3 closed
í Monitor type select color	W7	pins 2 & 3 closed
Monitor type select monochrome and compustar	W7	pins 1 & 2 closed
í NPU enabled	W11	Open
NPU disabled	W11	Closed

### DRAM CONFIGURATION

Size	Bank 0	Bank 1
1MB	(4) 256K x 9	NONE
2MB	(4) 512K x 9	NONE
4MB	(4) 512K x 9	(4) 512K x 9
4MB	(4) 1M x 9	NONE
8MB	(4) 2M x 9	NONE
10MB	(4) 2M x 9	(4) 512K x 9
16MB	(4) 2M x 9	(4) 2M x 9

### CACHE CONFIGURATION

Size	Cache
32KB	(4) 8K x 8