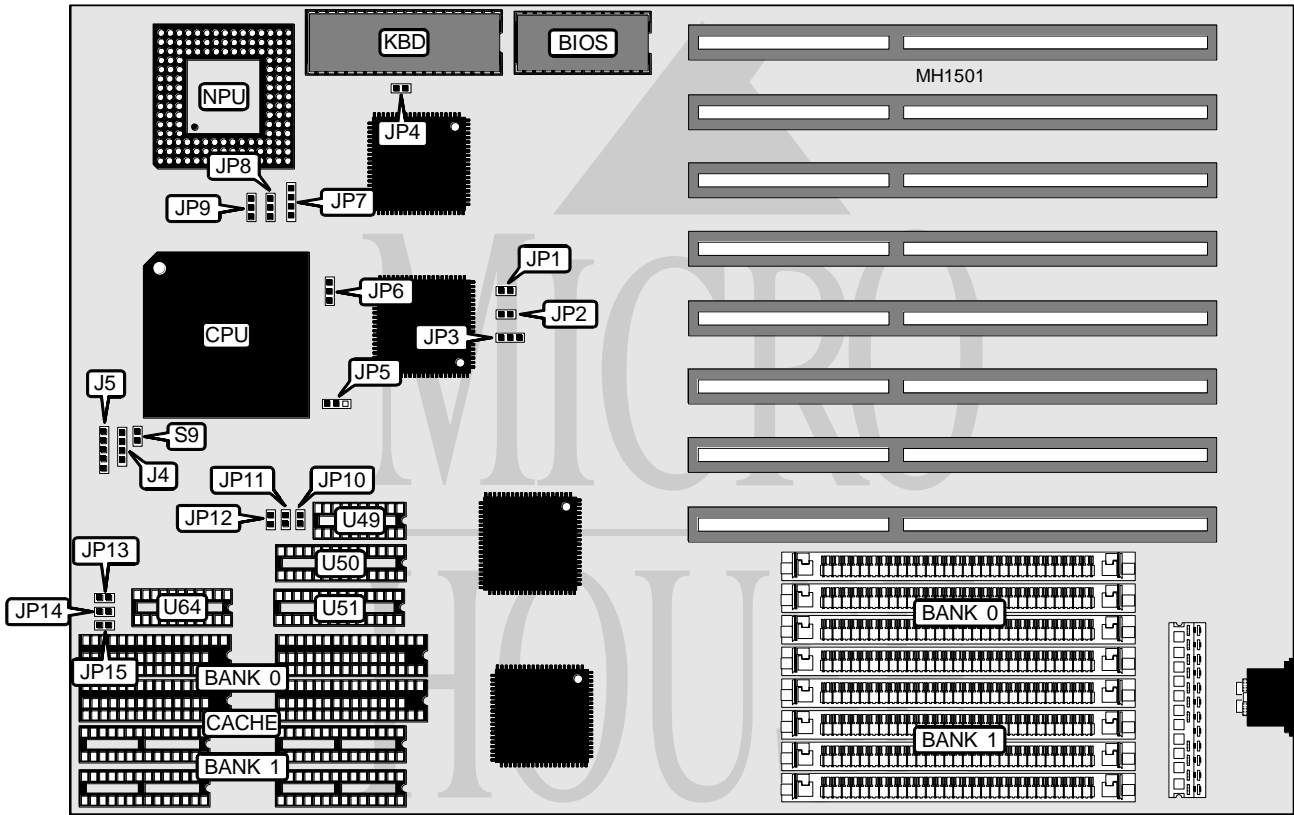


OCEAN INFORMATION SYSTEMS, INC.

DRAGON EISA 486

Processor	80486DX
Processor Speed	50MHz
Chip Set	OPTI
Max. onboard DRAM	128MB
SRAM Cache	64/128/256/512KB
BIOS	AMI
Dimensions	330mm x 215mm
I/O Options	None
NPU Options	4167



CONNECTIONS			
Purpose	Location	Purpose	Location
Speaker	J4	Reset switch	S9
Power LED & keylock	J5	CPU heatsink fan (+5VDC)	JP22
Note: The location of JP22 is unknown and may be labeled JP17 on the board.			

Continued on next page . . .

OCEAN INFORMATION SYSTEMS, INC.
 DRAGON EISA 486

... continued from previous page

USER CONFIGURABLE SETTINGS		
Function	Jumper	Position
í Factory configured - do not alter	JP1	Closed
í Factory configured - do not alter	JP2	Closed
í Factory configured - do not alter	JP3	pins 1 & 2 closed
í Monitor type select color	JP4	Closed
Monitor type select monochrome	JP4	Open
í Factory configured - do not alter	JP6	Open
í Factory configured - do not alter	JP7	pins 1 & 2 and 3 & 4 closed
í Factory configured - do not alter	JP8	pins 1 & 2 closed
í Factory configured - do not alter	JP9	pins 2 & 3 closed

DRAM CONFIGURATION		
Size	Bank 0	Bank 1
4MB	(4) 1M x 9	NONE
8MB	(4) 1M x 9	(4) 1M x 9
16MB	(4) 4M x 9	NONE
20MB	(4) 1M x 9	(4) 4M x 9
32MB	(4) 4M x 9	(4) 4M x 9
64MB	(4) 16M x 9	NONE
128MB	(4) 16M x 9	(4) 16M x 9

SRAM CONFIGURATION						
Size	Bank 0	Bank 1	Dirty (U49)	TAG (U50)	TAG (U51)	TAG (U64)
64KB	(4) 8K x 8	(4) 8K x 8	(1) 16K x 1	(1) 8K x 8	None	(1) 16K x 1 or 64K x 1
128KB	(4) 32K x 8	NONE	(1) 16K x 1	(1) 8K x 8	None	(1) 16K x 1 or 64K x 1
256KB	(4) 32K x 8	(4) 32K x 8	(1) 16K x 1	(1) 8K x 8	(1) 8K x 8	(1) 16K x 1 or 64K x 1
512KB	(4) 128K x 8	NONE	(1) 16K x 1	(1) 32K x 8	None	(1) 64K x 1

SRAM JUMPER CONFIGURATION				
Jumper	64KB	128KB	256KB	512KB
JP5	pins 2 & 3 closed	pins 1 & 2 closed	pins 2 & 3 closed	pins 1 & 2 closed
JP10	Open	Open	Open	Closed
JP11	Open	Open	Closed	Closed
JP12	Open	Closed	Closed	Closed
JP13	Open	Open	Closed	Closed
JP14	Open	Closed	Closed	Closed
JP15	Open	Open	Open	Closed