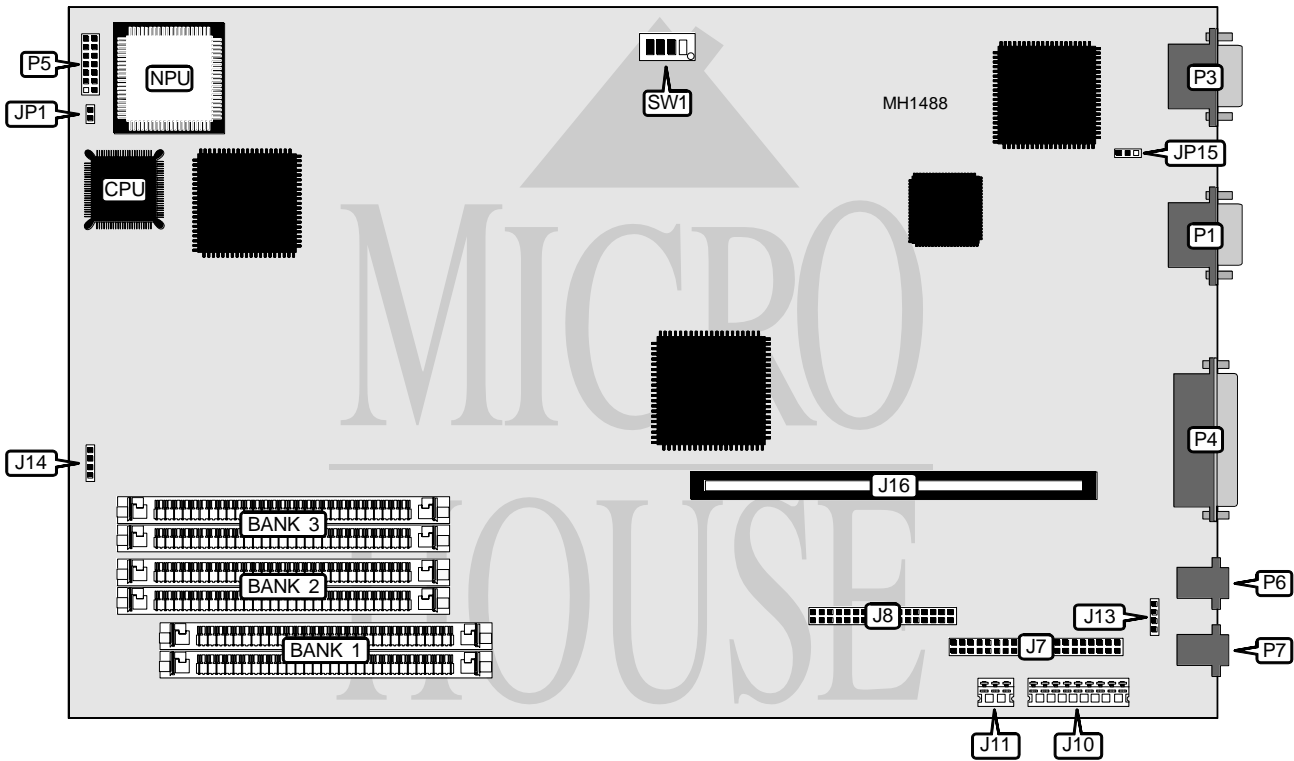


NEC TECHNOLOGIES, INC.

READY 325

Processor	80386SX
Processor Speed	25 MHz
Chip Set	Oak
Max. Onboard DRAM	20MB
SRAM Cache	None
BIOS	NEC
Dimensions	330mm x 218mm
I/O Options	Fax/modem, floppy drive interface, IDE interface, multi-function connector (PS/2 mouse, PS/2 keyboard, power LED), parallel port, proprietary riser card, serial port, VGA port
NPU Options	80387SX



CONNECTIONS			
Purpose	Location	Purpose	Location
IDE interface	J7	Speaker	JP1
Floppy drive interface	J8	Serial port	P1
Main board power connector	J10 & J11	VGA port	P3
External battery	J13	Parallel port	P4
IDE interface LED	J14	Multi-function connector	P5
Proprietary riser card connection	J16	RJ11 modem interface	P6 & P7

Continued on next page . . .

NEC TECHNOLOGIES, INC.

READY 325

... continued from previous page

USER CONFIGURABLE SETTINGS		
Function	Jumper/Switch	Position
í Flash BIOS programmable via network disabled	J15	pins 1 & 2 closed
Flash BIOS programmable via network enabled	J15	pins 2 & 3 closed
í Onboard video enabled	SW1/1	Off
Onboard video disabled	SW1/1	On
í Floppy interface (J8) enabled	SW1/2	Off
Floppy interface (J8) disabled	SW1/2	On
í System password enabled	SW1/3	Off
System password disabled & cleared	SW1/3	On
í Flash BIOS write enabled	SW1/4	Off
Flash BIOS write disabled	SW1/4	On

DRAM CONFIGURATION				
Size	Bank 0	Bank 1	Bank 2	Bank 3
2MB	2MB	NONE	NONE	NONE
4MB	2MB	(2) 1M x 9	NONE	NONE
6MB	2MB	(2) 1M x 9	(2) 1M x 9	NONE
8MB	2MB	(2) 1M x 9	(2) 1M x 9	(2) 1M x 9
10MB	2MB	NONE	(2) 4M x 9	NONE
12MB	2MB	(2) 1M x 9	(2) 4M x 9	NONE
18MB	2MB	NONE	(2) 4M x 9	(2) 4M x 9
20MB	2MB	(2) 1M x 9	(2) 4M x 9	(2) 4M x 9

Note: Bank 0 is soldered on the main board
18MB and 20MB configurations require NEC EMS driver.