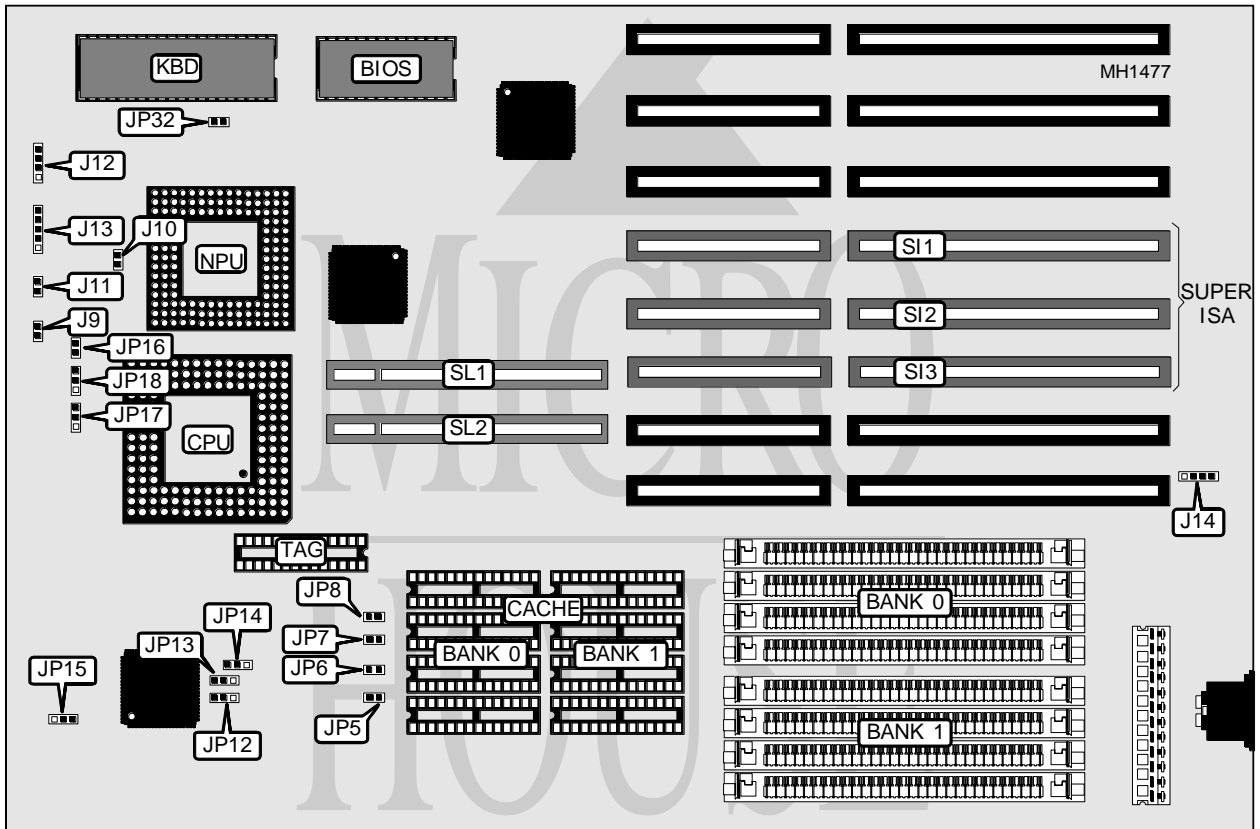


# INFORMTECH INTERNATIONAL, INC.

## G 4 8 6 E V L

<b>Processor</b>	80486SX/80487SX/80486DX/80486DX2/ODP486DX
<b>Processor Speed</b>	25/33/50/50i/66(internal)MHz
<b>Chip Set</b>	HINT
<b>Max. Onboard DRAM</b>	128MB
<b>Cache</b>	64/128/256KB
<b>BIOS</b>	AMI
<b>Dimensions</b>	330mm x 218mm
<b>I/O Options</b>	32-bit VESA local bus slots (2), super ISA slots (3)
<b>NPU Options</b>	4167



CONNECTIONS			
Purpose	Location	Purpose	Location
Reset connector	J9	Power LED & keylock	J13
Turbo LED connector	J10	Battery connector	J14
Turbo switch connector	J11	32 bit VESA local bus slots	SL1, SL2
Speaker connector	J12	24-bit Super ISA slots	SI1, SI2, SI3
Note: The Super ISA slots are 24-bit EISA slots and are not busmastering.			

Continued on next page . . .

**INFORMTECH INTERNATIONAL, INC.**  
**G 4 8 6 E V L**

... continued from previous page

USER CONFIGURABLE SETTINGS		
Function	Jumper/Switch	Position
í Monitor type select color	JP32	Open
Monitor type select monochrome	JP32	Closed

DRAM CONFIGURATION		
Size	Bank 0	Bank 3
4MB	(4) 1M x 9	NONE
8MB	(4) 1M x 9	(4) 1M x 9
16MB	(4) 4M x 9	NONE
20MB	(4) 1M x 9	(4) 4M x 9
20MB	(4) 4M x 9	(4) 1M x 9
32MB	(4) 4M x 9	(4) 4M x 9
64MB	(4) 16M x 9	NONE
128MB	(4) 16M x 9	(4) 16M x 9

CACHE CONFIGURATION			
Size	Bank 0	Bank 1	TAG
64KB	(4) 8K x 8	(4) 8K x 8	(1) 8K x 8
128KB	NONE	(4) 32K x 8	(1) 8K x 8
256KB	(4) 32K x 8	(4) 32K x 8	(1) 32K x 8

CACHE JUMPER CONFIGURATION							
Cache	JP5	JP6	JP7	JP8	JP12	JP13	JP14
64K	Open	Open	Open	Open	pins 1 & 2	pins 1 & 2	pins 1 & 2
128K	Closed	Open	Open	Closed	pins 1 & 2	pins 2 & 3	pins 1 & 2
256K	Closed	Closed	Closed	Closed	pins 2 & 3	pins 2 & 3	pins 2 & 3

CPU MODE CONFIGURATION					
CPU type	CPU speed	JP15	JP16	JP17	JP18
80486SX	25	pins 2 & 3	Open	Open	pins 2 & 3
80486SX	33	pins 2 & 3	Open	Open	pins 2 & 3
80487SX	25	pins 2 & 3	Closed	pins 2 & 3	pins 1 & 2
80486DX	25	pins 2 & 3	Closed	pins 1 & 2	pins 1 & 2
80486DX	33	pins 2 & 3	Closed	pins 1 & 2	pins 1 & 2
80486DX	50	pins 1 & 2	Closed	pins 1 & 2	pins 1 & 2
80486DX2	50i	pins 2 & 3	Closed	pins 1 & 2	pins 1 & 2
80486DX2	66i	pins 2 & 3	Closed	pins 1 & 2	pins 1 & 2
486ODP	66i	pins 2 & 3	Closed	pins 2 & 3	pins 1 & 2
80486DX2	66i	pins 2 & 3	Closed	pins 1 & 2	pins 1 & 2