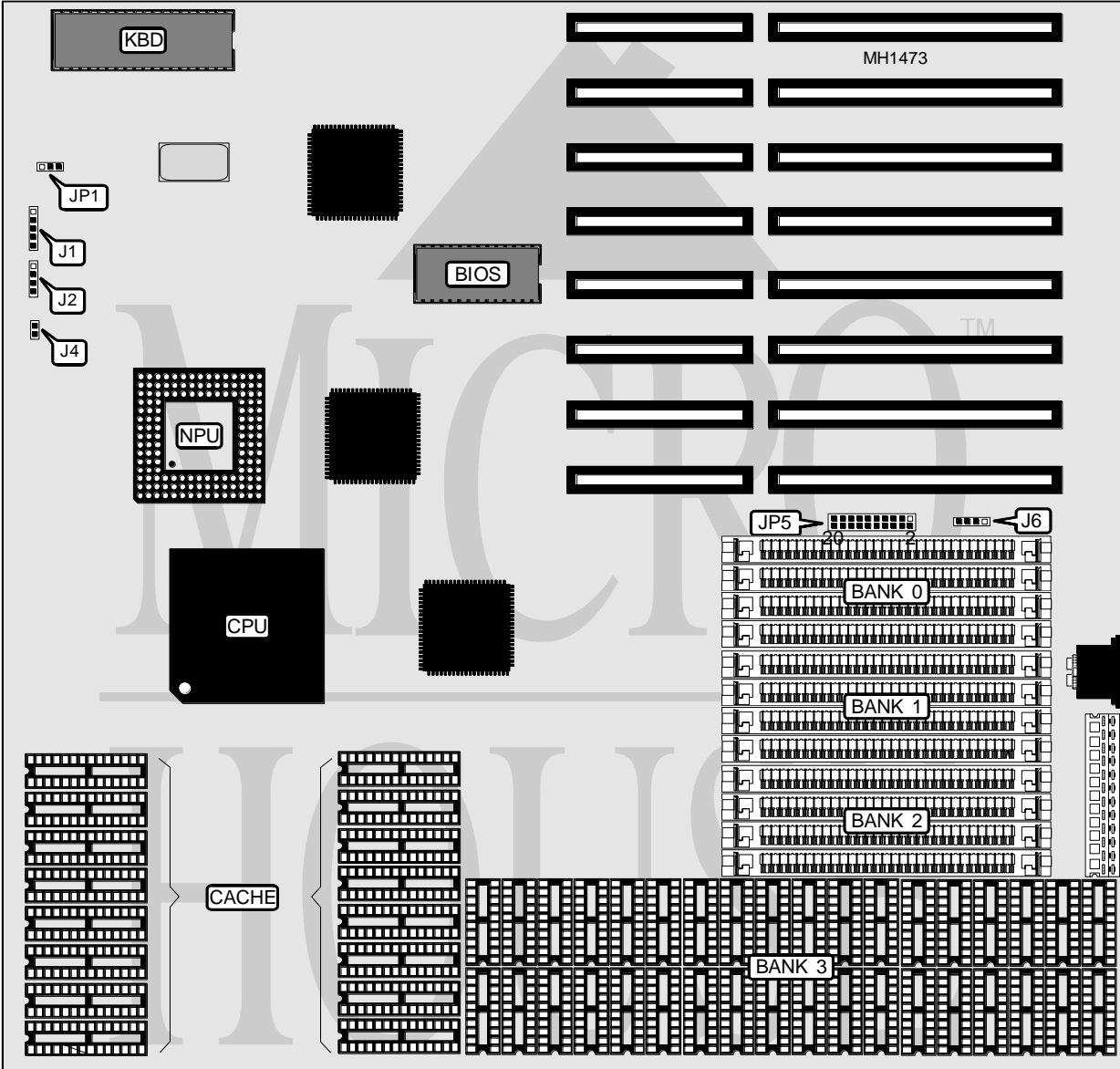


UNIDENTIFIED MST 486A GENERATION STANDARD

Processor	80486DX
Processor Speed	25MHz
Chip Set	OPTI
Max. Onboard DRAM	16MB
SRAM Cache	128KB
BIOS	AMI
Dimensions	330mm x 220mm
I/O Options	None
NPU Options	4167



Continued on next page . . .

UNIDENTIFIED

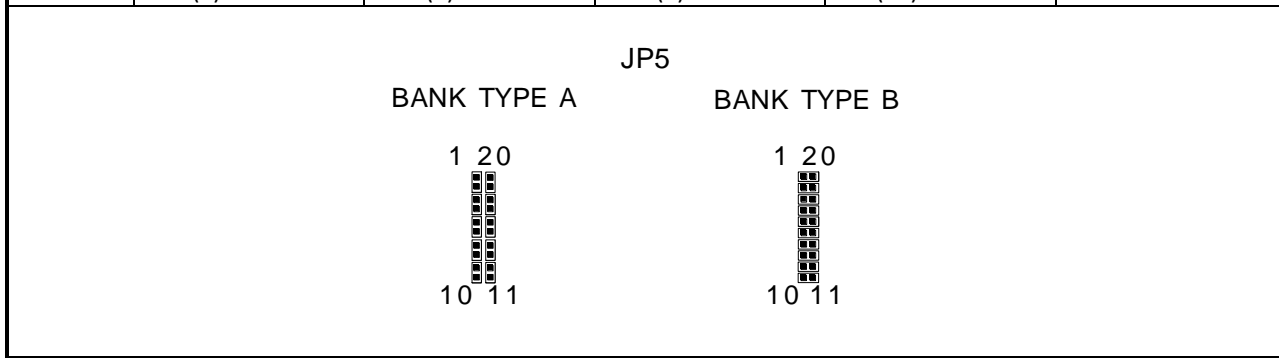
MST 486A GENERATION STANDARD

... continued from previous page

CONNECTIONS			
Purpose	Location	Purpose	Location
Power LED & keylock	J1	Reset switch	J4
Speaker	J2	External battery	J6

USER CONFIGURABLE SETTINGS		
Function	Jumper/Switch	Position
Monitor type select Color	JP1	pins 1 & 2 closed
Monitor type select Monochrome	JP1	pins 2 & 3 closed

DRAM CONFIGURATION					
Size	Bank 0	Bank 1	Bank 2	Bank 3	Bank Type
1MB	(4) 256K x 9	NONE	NONE	NONE	A
2MB	(4) 256K x 9	(4) 256K x 9	NONE	NONE	A
3MB	(4) 256K x 9	(4) 256K x 9	(4) 256K x 9	NONE	A
4MB	NONE	NONE	NONE	(36) 411000	B
4MB	(4) 1M x 9	NONE	NONE	NONE	A
5MB	(4) 256K x 9	(4) 1M x 9	NONE	NONE	A
6MB	(4) 256K x 9	(4) 256K x 9	(4) 1M x 9	NONE	A
7MB	(4) 256K x 9	(4) 256K x 9	(4) 256K x 9	(36) 411000	B
8MB	(4) 1M x 9	(4) 1M x 9	NONE	NONE	A
9MB	(4) 1M x 9	(4) 1M x 9	(4) 256K x 9	NONE	A
10MB	(4) 256K x 9	(4) 256K x 9	(4) 1M x 9	(36) 411000	B
12MB	(4) 1M x 9	(4) 1M x 9	(4) 1M x 9	NONE	A
13MB	(4) 256k x 9	(4) 1M x 9	(4) 1M x 9	(36) 411000	B
16MB	(4) 1 M x 9	(4) 1M x 9	(4) 1M x 9	(36) 411000	B



Note: pins are shown in the closed position

CACHE CONFIGURATION	
Size	Cache
128KB	(16) 8K x 8