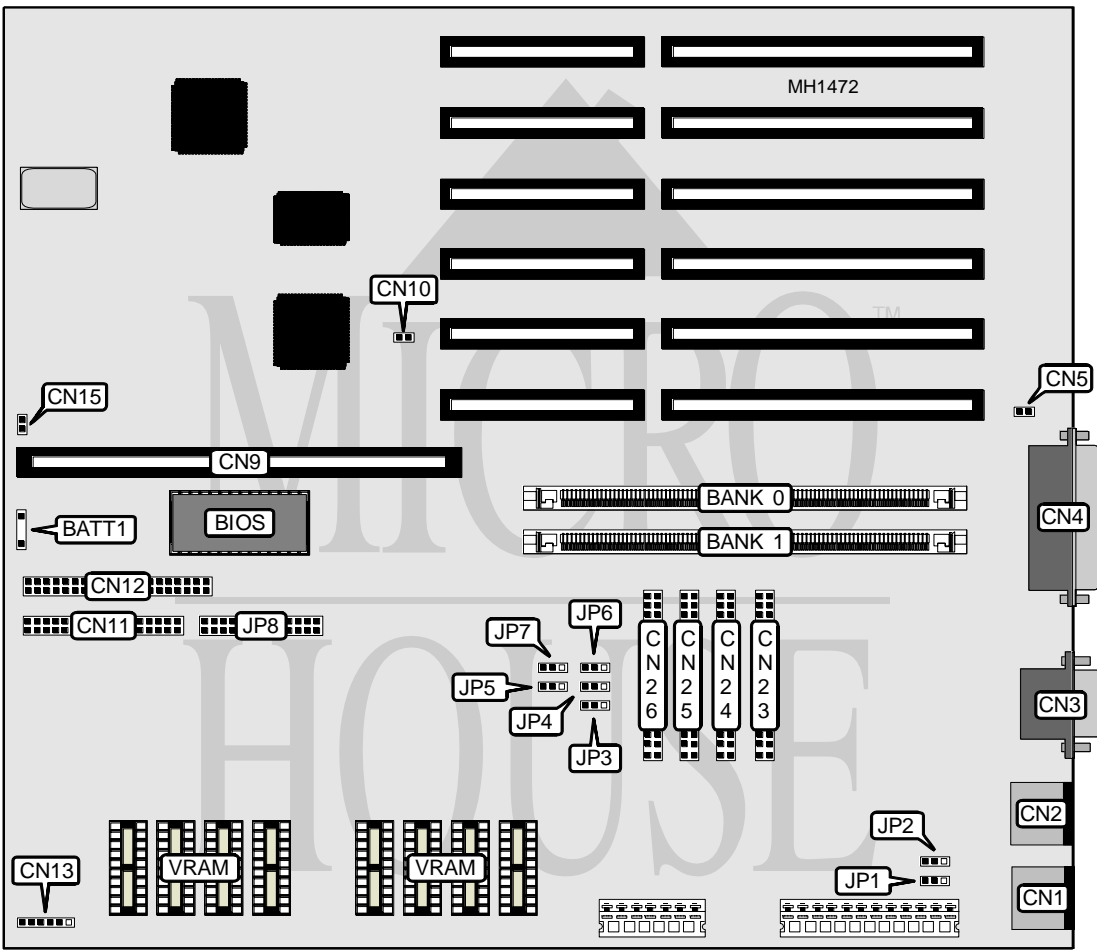


# EPSON, INC.

## PROGRESSION 745-MA

<b>Processor</b>	80486SX/80487SX/80486DX/ODP487SX/80486DX2
<b>Processor Speed</b>	25/33/66iMHz (depending on CPU card installed)
<b>Chip Set</b>	UMC
<b>Max. Onboard DRAM</b>	128MB
<b>SRAM Cache</b>	None (system uses DRAM as virtual cache)
<b>BIOS</b>	Epson/Phoenix
<b>Dimensions</b>	218mm x 330mm
<b>I/O Options</b>	32-bit CPU card, floppy drive interface, IDE interface, parallel port, PS/2 keyboard connector, PS/2 mouse port, serial port, VGA daughterboard, VGA feature connector
<b>NPU Options</b>	4167(on some versions of the CPU card)



Continued on next page . . .

# EPSON, INC.

## PROGRESSION 745-MA

... continued from previous page

CONNECTIONS			
Purpose	Location	Purpose	Location
External battery	BATT1	IDE interface LED	CN10
PS/2 mouse port	CN1	Floppy drive interface	CN11
PS/2 keyboard connector	CN2	IDE interface	CN12
Serial port	CN3	Power/Turbo LED	CN13
Parallel port	CN4	Speaker	CN15
Chassis fan power	CN5	VGA daughterboard	CN23-CN26
32-bit CPU card	CN9	VGA feature connector	JP8

USER CONFIGURABLE SETTINGS		
Function	Jumper	Position
î Factory configured - do not alter	JP1	pins 1 & 2 closed
í Factory configured - do not alter	JP2	pins 1 & 2 closed
í Monitor type select color	JP5	pins 1 & 2 closed
Monitor type select monochrome	JP5	pins 2 & 3 closed
í System password enabled	JP6	pins 2 & 3 closed
System password disabled	JP6	pins 1 & 2 closed
í Onboard video enabled	JP7	pins 1 & 2 closed
Onboard video disabled	JP7	pins 2 & 3 closed
î Factory configured - do not alter	JP9	pins 1 & 2 closed

Note: JP9 is not present on some revisions. The location of JP9 is unknown.

PS/2 MOUSE CONFIGURABLE SETTINGS		
Function	JP3	JP4
í Enabled	pins 1 & 2 closed	pins 2 & 3 closed
Disabled	pins 2 & 3 closed	pins 1 & 2 closed

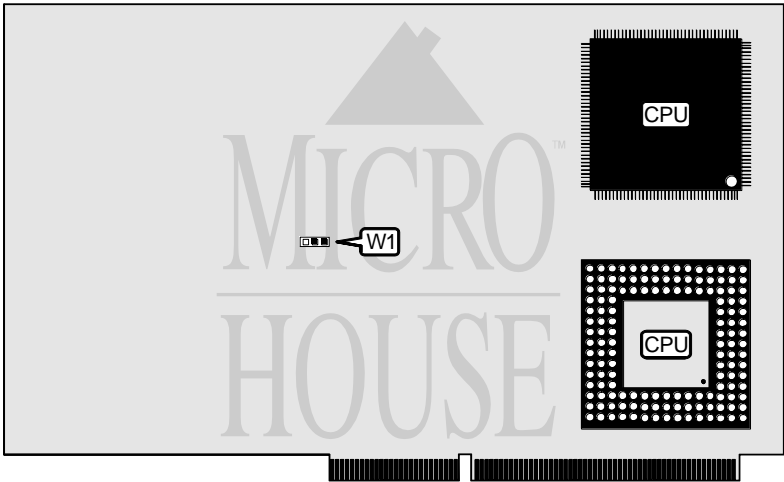
DRAM CONFIGURATION		
Size	Bank 0	Bank 1
1MB	(1) 256K x 36	NONE
2MB	(1) 256K x 36	(1) 256K x 36
4MB	(1) 1M x 36	NONE
5MB	(1) 1M x 36	(1) 1M x 36
8MB	(1) 1M x 36	(1) 1M x 36
16MB	(1) 4M x 36	NONE
17MB	(1) 4M x 36	(1) 1M x 36
20MB	(1) 4M x 36	(1) 1M x 36
32MB	(1) 4M x 36	(1) 4M x 36
64MB	(1) 16M x 36	NONE
65MB	(1) 16M x 36	(1) 1M x 36
68MB	(1) 16M x 36	(1) 4M x 36
80MB	(1) 16M x 36	(1) 4M x 36
128MB	(1) 16M x 36	(1) 16M x 36

Continued on next page . . .

EPSON, INC.  
PROGRESSION 745-MA  
745-CP4 SX CPU CARD

... continued from previous page

**Processor** 80486SX/80487SX/ODP486SX  
**Processor Speed** 25MHz  
**NPU Options** None



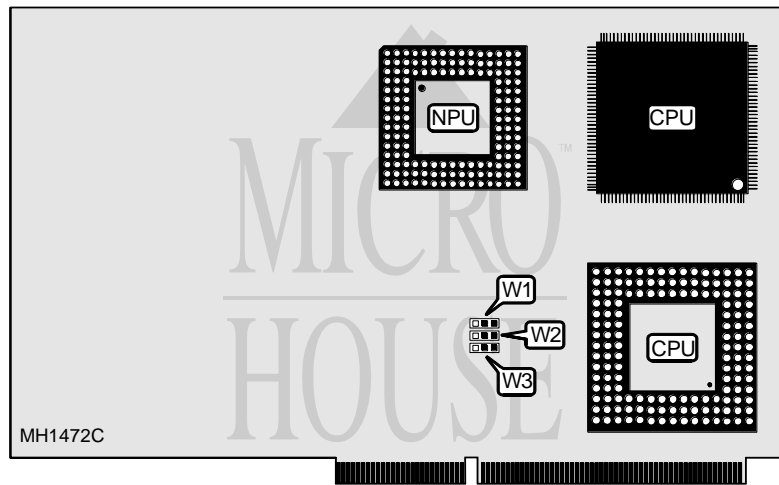
CPU CONFIGURATION JUMPERS	
Type	W1
í 80486SX PQFP	pins 1 & 2 closed
80487SX PGA	pins 1 & 2 closed
ODP486SX	pins 1 & 2 closed

Continued on next page ...

EPSON, INC.  
 PROGRESSION 745-MA  
 745-CP DX CPU CARD

... continued from previous page

Processor 80486DX/ODP486DX  
 Processor Speed 33MHz  
 NPU Options 4167



CPU CONFIGURATION JUMPERS			
Type	W1	W2	W3
í 80486DX PQFP	pins 1 & 2 closed	pins 1 & 2 closed	pins 1 & 2 closed
ODP486DX PGA	pins 1 & 2 closed	pins 1 & 2 closed	pins 2 & 3 closed

Continued on next page ...

EPSON, INC.  
PROGRESSION 745-MA  
745-CP3 DX2 CPU CARD

... continued from previous page

Processor	80486DX2
Processor Speed	33/66(internal)MHz
NPU Options	4167

