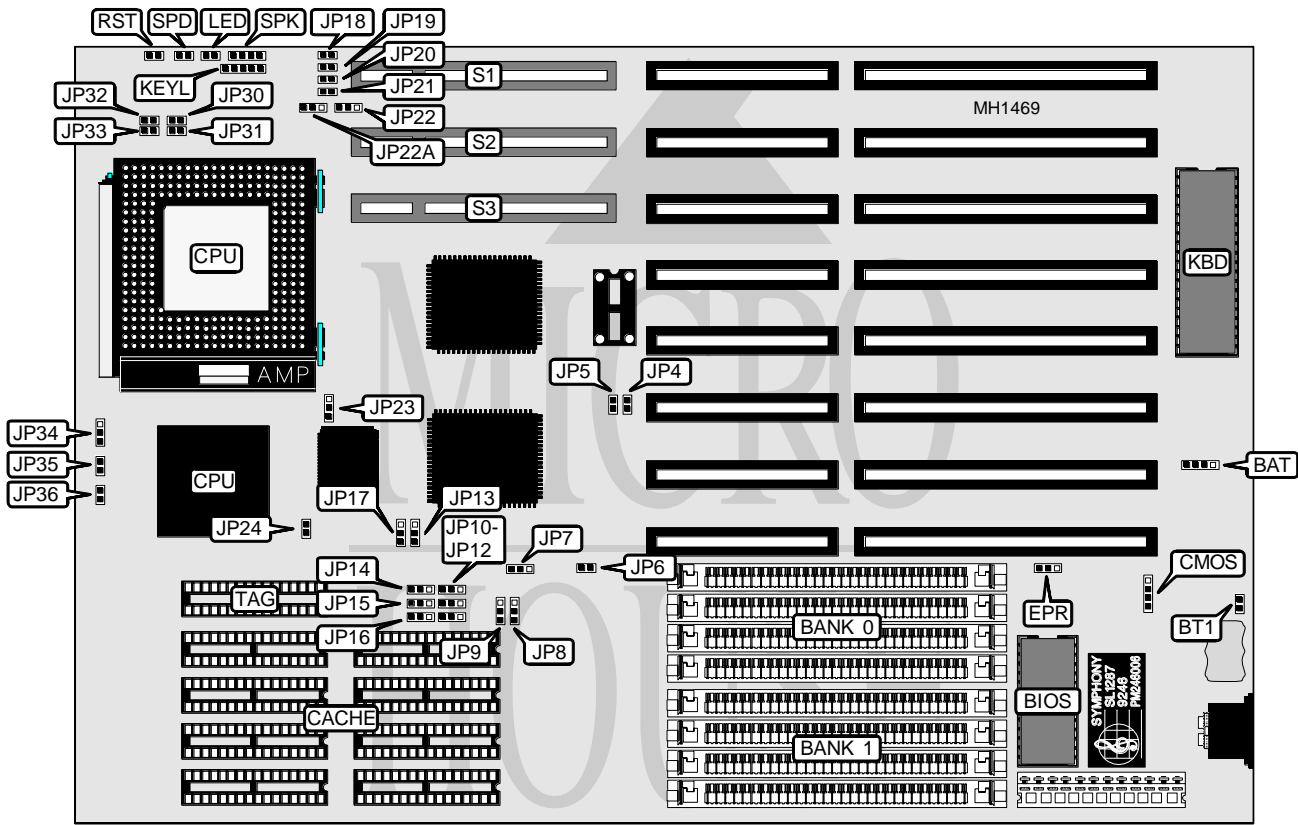


UNIDENTIFIED

VEGA VS3486-3VL

Processor	80386DX/80486SX/80486DX/80486DX2
Processor Speed	25/33/40/50(internal)/50/66(internal)MHz
Chip Set	Symphony
Max. Onboard DRAM	32MB
SRAM Cache	64/256/1024KB
BIOS	AMI
Dimensions	330mm x 218mm
I/O Options	32-bit Vesa local bus slots (3)
NPU Options	None



CONNECTIONS			
Purpose	Location	Purpose	Location
External battery	BAT	32-bit Vesa local bus slots	S1, S2 & S3
Power LED & keylock	KEYL	Turbo switch	SPD
Turbo LED	LED	Speaker	SPK
Reset switch	RST		

Continued on next page . . .

UNIDENTIFIED

VEGA VS3486-3VL

... continued from previous page

USER CONFIGURABLE SETTINGS		
Function	Jumper	Position
í Battery select internal	BT1	Closed
Battery select external	BT1	Open
í CMOS memory normal operation	CMOS	pins 3 & 4 closed
CMOS memory clear	CMOS	pins 1 & 2 closed
BIOS type select normal (27C512)	EPR	pins 1 & 2 closed
BIOS type select flash (28F001BX)	EPR	pins 2 & 3 closed
í Factory configured - do not alter	JP19	Closed
í Factory configured - do not alter	JP30	Closed
í Factory configured - do not alter	JP31	Open

DRAM CONFIGURATION		
Size	Bank 0	Bank 1
1MB	(4) 256K x 9	NONE
2MB	(4) 256K x 9	(4) 256K x 9
4MB	(4) 1M x 9	NONE
5MB	(4) 256K x 9	(4) 1M x 9
8MB	(4) 1M x 9	(4) 1M x 9
17MB	(4) 256K x 9	(4) 4M x 9
16MB	(4) 4M x 9	NONE
20MB	(4) 1M x 9	(4) 4M x 9
32MB	(4) 4M x 9	(4) 4M x 9

SRAM CONFIGURATION		
Size	Cache	TAG
64KB	(8) 8K x 8	(1) 8K x 8
256KB	(8) 32K x 8	(1) 32K x 8
1024KB	(8) 128K x 8	(1) 128K x 8

SRAM JUMPER CONFIGURATION					
Size	JP10	JP11	JP12	JP15	JP16
64KB	pins 1 & 2	pins 1 & 2	pins 1 & 2	pins 1 & 2	pins 1 & 2
256KB	pins 2 & 3	pins 2 & 3	pins 2 & 3	pins 1 & 2	pins 1 & 2
1024KB	pins 2 & 3	pins 2 & 3	pins 2 & 3	pins 2 & 3	pins 2 & 3

Note: Pins designated should be in the closed postion.

Continued on next page ...

UNIDENTIFIED

VEGA VS3486-3VL

... continued from previous page

CPU TYPE CONFIGURATION				
Jumper	80386DX	80486SX	80486DX	80486DX2
JP6	Open	Closed	Closed	Closed
JP7	pins 1 & 2 closed	pins 2 & 3 closed	pins 2 & 3 closed	pins 2 & 3 closed
JP8	pins 2 & 3 closed	pins 1 & 2 closed	pins 1 & 2 closed	pins 1 & 2 closed
JP9	pins 1 & 2 closed	pins 2 & 3 closed	pins 2 & 3 closed	pins 2 & 3 closed
JP13	pins 1 & 2 closed	pins 2 & 3 closed	pins 2 & 3 closed	pins 2 & 3 closed
JP14	pins 2 & 3 closed	pins 1 & 2 closed	pins 1 & 2 closed	pins 1 & 2 closed
JP17	pins 1 & 2 open	pins 2 & 3 closed	pins 2 & 3 closed	pins 2 & 3 closed
JP20	Closed	Open	Open	Open
JP21	Open	Closed	Closed	Closed
JP24	Closed	Open	Open	Open
JP34	pins 1 & 2 closed	pins 2 & 3 closed	pins 1 & 2 closed	pins 1 & 2 closed
JP35	Closed	Open	Closed	Closed
JP36	Closed	Open	Closed	Closed

CPU SPEED CONFIGURATION								
Speed	JP4	JP5	JP18	JP22A	JP22	JP23	JP32	JP33
25/50i MHz	Open	Closed	Closed	2 & 3	1 & 2	2 & 3	Open	Open
33/66i MHz	Closed	Open	Closed	2 & 3	1 & 2	2 & 3	Open	Open
40MHz	Open	Open	Open	2 & 3	1 & 2	2 & 3	Closed	Open
50MHz	Open	Closed	Open	1 & 2	2 & 3	1 & 2	Closed	Closed

Note: Pins designated should be in the closed position.