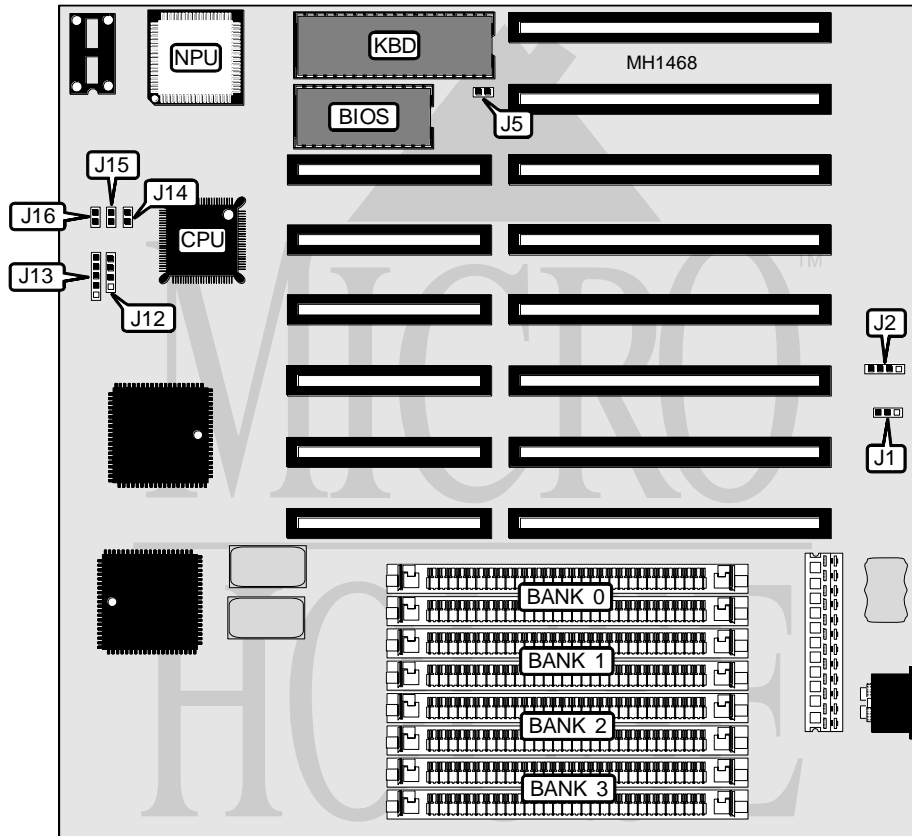


# AMERICAN DIGICOM CORPORATION

## P 9 - H D

**Processor** 80386SX  
**Processor Speed** 16/20/25/33MHz  
**Chip Set** OPTI  
**Max. onboard DRAM** 16MB  
**SRAM Cache** None  
**BIOS** AMI  
**Dimensions** 220mm x 220mm  
**I/O Options** None  
**NPU Options** 80387SX



CONNECTIONS			
Purpose	Location	Purpose	Location
External battery	J2	Reset switch	J14
Speaker	J12	Turbo switch	J15
Power LED & keylock	J13	Turbo LED	J16

Continued on next page . . .

## AMERICAN DIGICOM CORPORATION

## P 9 - H D

... continued from previous page

USER CONFIGURABLE SETTINGS		
Function	Jumper	Position
í CMOS memory normal operation	J1	pins 2 & 3 closed
CMOS memory clear	J1	pins 1 & 2 closed
í Monitor type select color	J5	Closed
Monitor type select monochrome	J5	Open

DRAM CONFIGURATION				
Size	Bank 0	Bank 1	Bank 2	Bank 3
1MB	(2) 256K x 9	(2) 256K x 9	NONE	NONE
2MB	(2) 256K x 9	(2) 256K x 9	(2) 256K x 9	(2) 256K x 9
2MB	(2) 1M x 9	NONE	NONE	NONE
3MB	(2) 256K x 9	(2) 256K x 9	(2) 1M x 9	NONE
4MB	(2) 1M x 9	(2) 1M x 9	NONE	NONE
5MB	(2) 256K x 9	(2) 256K x 9	(2) 1M x 9	(2) 1M x 9
6MB	(2) 1M x 9	(2) 1M x 9	(2) 1M x 9	NONE
8MB	(2) 1M x 9	(2) 1M x 9	(2) 1M x 9	(2) 1M x 9
8MB	(2) 4M x 9	NONE	NONE	NONE
9MB	(2) 256K x 9	(2) 256K x 9	(2) 4M x 9	NONE
10MB	(2) 1M x 9	(2) 4M x 9	NONE	NONE
12MB	(2) 1M x 9	(2) 1M x 9	(2) 4M x 9	NONE
16MB	(2) 4M x 9	(2) 4M x 9	NONE	NONE