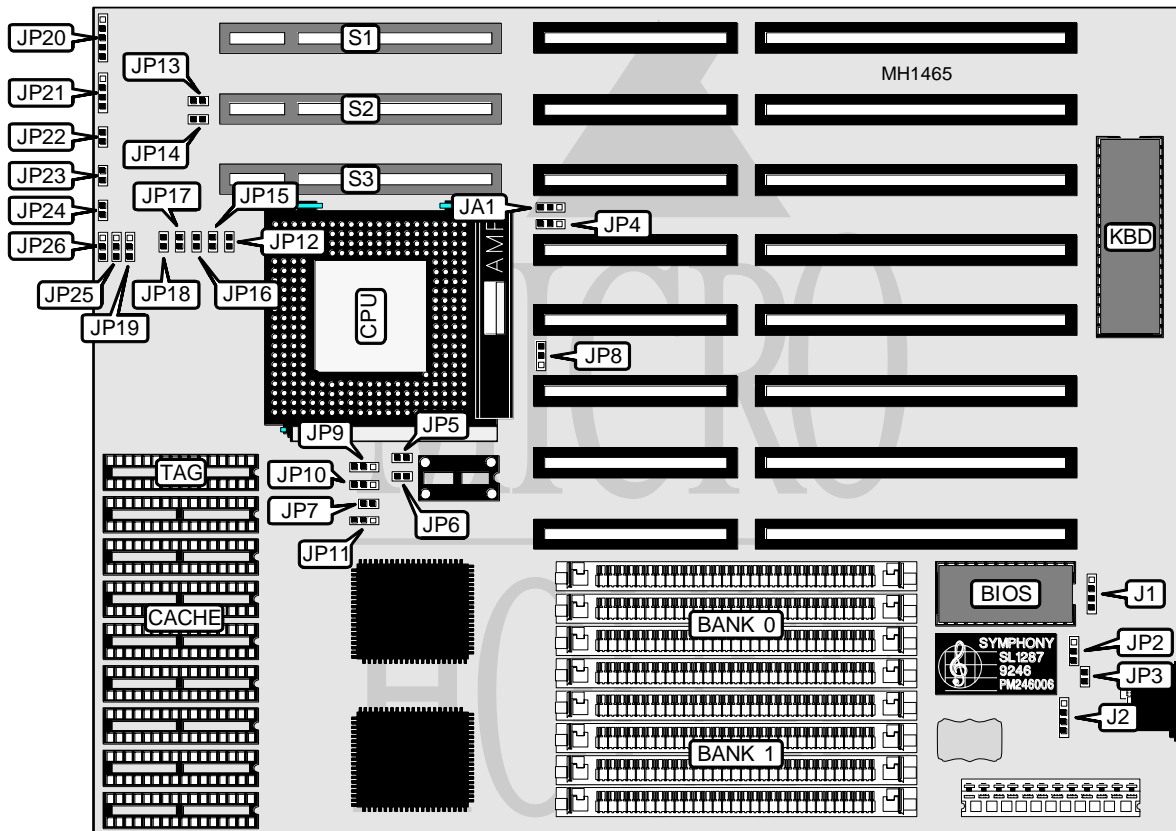


UNIDENTIFIED

VEGA VS486F-3VL

Processor 80486SX/80486DX/80486DX2/ODP586SX
Processor Speed 25/33/50(internal)/50/66(internal) MHz
Chip Set Symphony
Max. Onboard DRAM 32MB
SRAM Cache 64/256/1024KB
BIOS AMI
Dimensions 330mm x 218mm
I/O Options 32-bit VESA local bus slots (3)
NPU Options None



CONNECTIONS			
Purpose	Location	Purpose	Location
External battery	J1	Turbo LED	JP23
Power LED & keylock	JP20	Turbo switch	JP24
Speaker	JP21	32-bit VESA Local bus slots	S1, S2 & S3
Reset switch	JP22		

Continued on next page . . .

UNIDENTIFIED

VEGA VS486F-3VL

... continued from previous page

USER CONFIGURABLE SETTINGS		
Function	Jumper	Position
í CMOS memory normal operation	J2	pins 1 & 2 closed
CMOS memory clear	J2	pins 3 & 4 closed
BIOS type select regular (27C512)	JP2	pins 1 & 2 closed
BIOS type select flash (28F001BX)	JP2	pins 2 & 3 closed
í Batterly select internal	JP3	Closed
Battery select external	JP3	Open
í Factory configured - do not alter	JP12	Closed
í Factory configured - do not alter	JP15	Open

DRAM CONFIGURATION		
Size	Bank 0	Bank 1
1MB	(4) 256K x 9	NONE
2MB	(4) 256K x 9	(4) 256K x 9
4MB	(4) 1M x 9	NONE
5MB	(4) 256K x 9	(4) 1M x 9
8MB	(4) 1M x 9	(4) 1M x 9
17MB	(4) 256K x 9	(4) 4M x 9
16MB	(4) 4M x 9	NONE
20MB	(4) 1M x 9	(4) 4M x 9
32MB	(4) 4M x 9	(4) 4M x 9

SRAM JUMPER CONFIGURATION					
Size	JP8	JP9	JP19	JP25	JP26
64KB	pins 1 & 2	pins 1 & 2	pins 1 & 2	pins 1 & 2	pins 1 & 2
256KB	pins 1 & 2	pins 1 & 2	pins 2 & 3	pins 2 & 3	pins 2 & 3
1MB	pins 2 & 3	pins 2 & 3	pins 2 & 3	pins 2 & 3	pins 2 & 3

Note: Pins designated should be in the closed postion.

SRAM CONFIGURATION			
Size	Max Cachable	Cache	TAG
64KB	8MB	(8) 8K x 8	(1) 8K x 8
256KB	32MB	(8) 32K x 8	(1) 32K x 8
1MB	64MB	(8) 128K x 8	(1) 128K x 8

CPU TYPE CONFIGURATION			
CPU	JP7	JP10	JP17
80486SX	Open	pins 2 & 3 closed	Open
All others	Closed	pins 1 & 2 closed	Closed

CPU SPEED CONFIGURATION									
Speed	JA1	JP4	JP5	JP6	JP11	JP13	JP14	JP16	JP18
25/50i MHz	2 & 3	2 & 3	Open	Closed	2 & 3	Open	Closed	Open	Open
33/66i MHz	2 & 3	2 & 3	Closed	Open	2 & 3	Open	Closed	Open	Open
50MHz	1 & 2	1 & 2	Open	Closed	1 & 2	Closed	Open	Closed	Closed

Note: Pins designated should be in the closed postion.