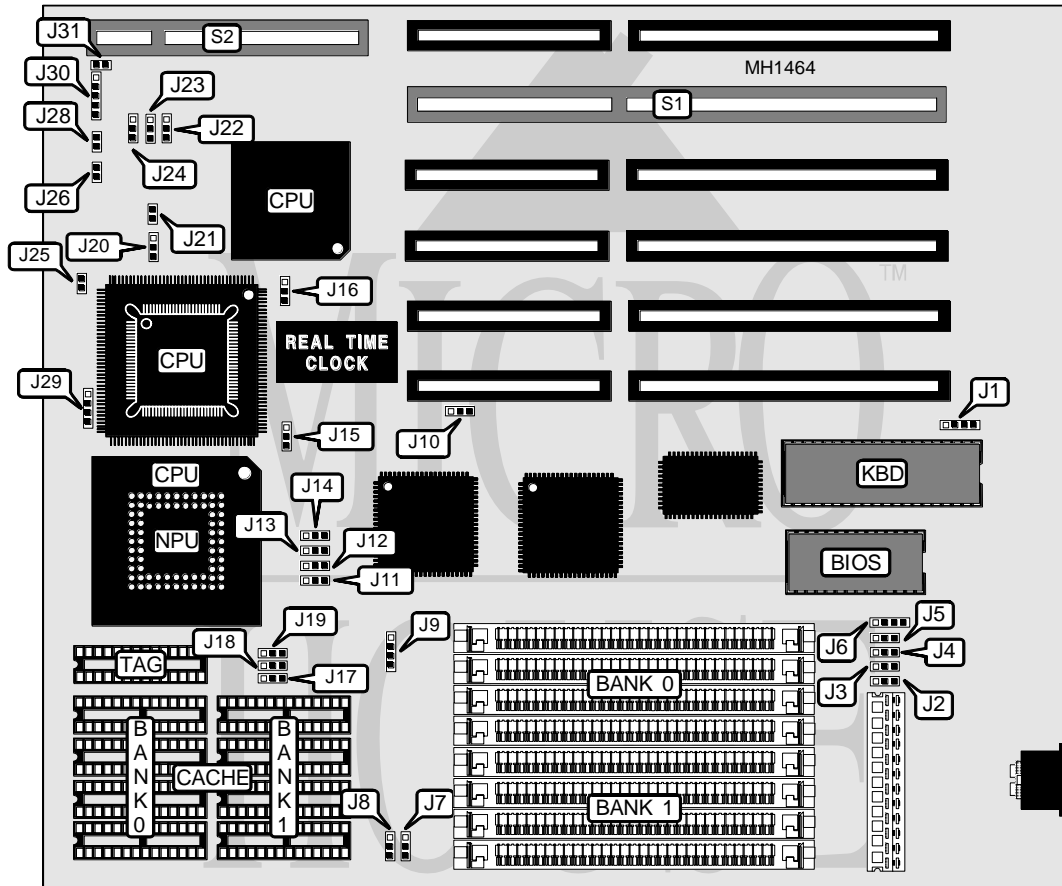


UNITRON COMPUTER, INC.

3/486 MAINBOARD

Processor	80386DX/CX486DLC/80486SX/80486DX/ODP486SX/80486DX2
Processor Speed	25/33/40/50(internal)/50/66(internal)MHz
Chip Set	UMC
Max. Onboard DRAM	32MB
SRAM Cache	32/64/128/256KB
BIOS	AMI/Phoenix
Dimensions	230mm x 218mm
I/O Options	32-bit proprietary local bus slot, 32-bit VESA local bus slot
NPU Options	80387DX/CX487DLC



CONNECTIONS			
Purpose	Location	Purpose	Location
External battery	J1	Speaker	J29
Turbo LED	J25	Power LED & keylock	J30
Reset switch	J26	32-bit local bus slot	S1
Turbo switch	J28	32-bit VESA local bus slot	S2

Continued on next page . . .

UNITRON COMPUTER, INC.

3/486 MAINBOARD

... continued from previous page

USER CONFIGURABLE SETTINGS		
Function	Jumper	Position
í Monitor type select color	J6	pins 2 & 3 closed
Monitor type select monochrome	J6	pins 1 & 2 closed
í Parity enabled	J9	pins 2 & 3 closed
Parity disabled	J9	pins 1 & 2 closed
í Factory configured - do not alter	J21	Open
í Factory configured - do not alter	J31	Open

DRAM CONFIGURATION		
Size	Bank 0	Bank 1
1MB	(4) 256K x 9	NONE
2MB	(4) 256K x 9	(4) 256K x 9
4MB	(4) 1M x 9	NONE
5MB	(4) 256K x 9	(4) 1M x 9
8MB	(4) 1M x 9	(4) 1M x 9
16MB	(4) 4M x 9	NONE
20MB	(4) 4M x 9	(4) 1M x 9
32MB	(4) 4M x 9	(4) 4M x 9

SRAM CONFIGURATION			
Size	Cache	Location	TAG
32KB	(8) 8K x 8	Bank 0	(1) 8K x 8
64KB	(8) 8K x 8	Banks 0 & 1	(1) 8K x 8
128KB	(4) 32K x 8	Bank 0	(1) 8K x 8
256KB	(8) 32K x 8	Banks 0 & 1	(1) 32K x 8

SRAM JUMPER CONFIGURATION							
Size	J7	J8	J11	J12	J13 & J19	J17	J18
32KB	Open	pins 2 & 3	pins 1 & 2	pins 1 & 2	pins 1 & 2	pins 1 & 2	pins 1 & 2
64KB	Open	pins 1 & 2	pins 1 & 2	pins 2 & 3	pins 1 & 2	pins 1 & 2	pins 2 & 3
128KB	pins 1 & 2	pins 2 & 3	pins 1 & 2	pins 2 & 3	pins 2 & 3	pins 1 & 2	pins 2 & 3
256KB	pins 2 & 3	pins 1 & 2	pins 2 & 3	pins 2 & 3	pins 2 & 3	pins 2 & 3	pins 2 & 3

Note: Pins designated should in the closed position.

Continued On next page . .

UNITRON COMPUTER, INC.

3/486 MAINBOARD

... continued from previous page

VESA MODE CONFIGURATION			
Mode	J22	J23	J24
Master	pins 1 & 2 closed	pins 2 & 3 closed	pins 1 & 2 closed
Slave	pins 2 & 3 closed	pins 2 & 3 closed	pins 2 & 3 closed

Note: VESA master mode can only be enabled when IC PAL 16R4 is installed.

CPU TYPE CONFIGURATION					
CPU Type	J10	J14	J15	J16	J20
80386DX with NPU	pins 1 & 2	N/A	pins 1 & 2	N/A	N/A
80386DX w/o NPU	pins 1 & 2	N/A	pins 2 & 3	N/A	N/A
80486SX PQFP	pins 2 & 3	Open	pins 2 & 3	pins 2 & 3	Open
80486SX PGA	pins 2 & 3	Open	pins 2 & 3	pins 2 & 3	pins 2 & 3
80486SX	pins 2 & 3	pins 2 & 3	pins 2 & 3	pins 1 & 2	pins 1 & 2
80486SX + 487SX OD	pins 2 & 3	pins 1 & 2	pins 2 & 3	pins 1 & 2, 3 & 4	pins 2 & 3
80486SX + 486DX PGA	pins 2 & 3	pins 1 & 2	pins 2 & 3	pins 1 & 2, 3 & 4	pins 2 & 3
80486DX	pins 2 & 3	pins 2 & 3	pins 2 & 3	pins 1 & 2, 3 & 4	pins 2 & 3
80486DX2	pins 2 & 3	pins 2 & 3	pins 2 & 3	pins 1 & 2, 3 & 4	pins 2 & 3

CPU SPEED CONFIGURATION				
ICS2494 (CPU Clock Generator)				
Speed	J2	J3	J4	J5
25MHz	pins 1 & 2 closed	pins 2 & 3 closed	pins 2 & 3 closed	pins 1 & 2 closed
33MHz	pins 1 & 2 closed	pins 1 & 2 closed	pins 2 & 3 closed	pins 1 & 2 closed
40MHz	pins 2 & 3 closed	pins 2 & 3 closed	pins 1 & 2 closed	pins 1 & 2 closed
50iMHz	pins 1 & 2 closed	pins 2 & 3 closed	pins 2 & 3 closed	pins 1 & 2 closed
50MHz	pins 2 & 3 closed	pins 2 & 3 closed	pins 2 & 3 closed	pins 1 & 2 closed
66iMHz	pins 2 & 3 closed	pins 1 & 2 closed	pins 2 & 3 closed	pins 1 & 2 closed

CPU SPEED CONFIGURATION				
IMISC425 (CPU Clock Generator)				
Speed	J2	J3	J4	J5
25MHz	pins 2 & 3 closed	pins 1 & 2 closed	pins 1 & 2 closed	pins 1 & 2 closed
33MHz	pins 1 & 2 closed	pins 2 & 3 closed	pins 1 & 2 closed	pins 1 & 2 closed
40MHz	pins 1 & 2 closed	pins 2 & 3 closed	pins 2 & 3 closed	pins 2 & 3 closed
50iMHz	pins 2 & 3 closed	pins 1 & 2 closed	pins 1 & 2 closed	pins 1 & 2 closed
50MHz	pins 2 & 3 closed	pins 1 & 2 closed	pins 1 & 2 closed	pins 2 & 3 closed
66iMHz	pins 1 & 2 closed	pins 1 & 2 closed	pins 2 & 3 closed	pins 2 & 3 closed