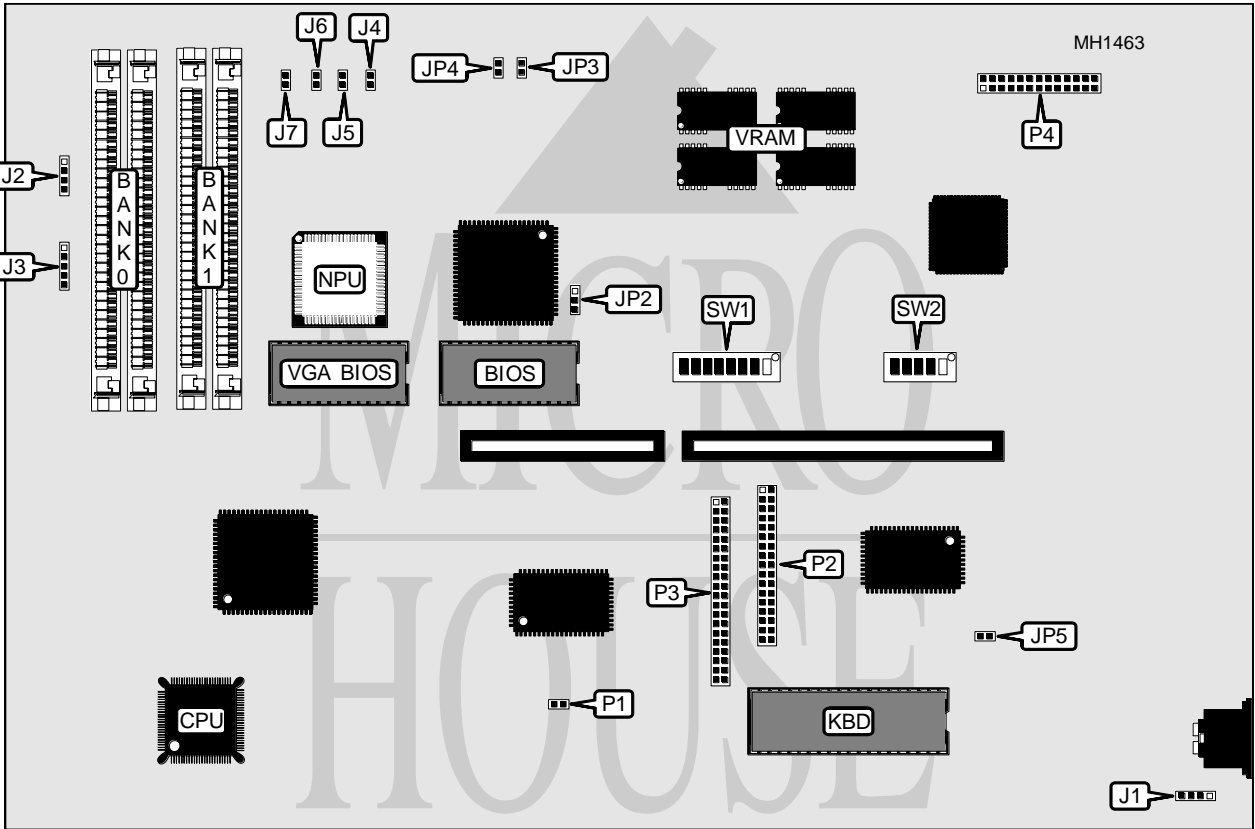


UNIDENTIFIED

A 3 5 1 3 8 6 S X

Processor 80386SX
Processor Speed 16/20MHz
Chip Set UMC
Max. onboard DRAM 4MB
Cache None
BIOS AMI
Dimensions 330mm x 220mm
I/O Options Floppy drive interface, game port, IDE interface, parallel port, serial ports (2), VGA feature connector
NPU Options 80387SX



CONNECTIONS			
Purpose	Location	Purpose	Location
External battery	J1	Floppy drive interface	P2
Speaker	J2	IDE interface	P3
Power LED & keylock	J3	VGA feature connector	P4
Turbo switch	J4	Serial port 2	Unknown
Reset switch	J5	Serial port 1	Unknown
IDE interface LED	J6	Parallel port	Unknown
Turbo LED	J7	Game port	Unknown

Note: J4 might not be available on future boards.

Continued on next page . . .

UNIDENTIFIED

A 3 5 1 3 8 6 S X

... continued from previous page

USER CONFIGURABLE SETTINGS		
Function	Jumper/Switch	Position
í Onboard VGA enabled	JP2	pins 1 & 2 closed
Onboard VGA disabled	JP2	pins 2 & 3 closed
í Monitor type select CGA	JP3	Closed
Monitor type select monochrome	JP3	Open
í Factory configured - do not alter	JP4	Open
í Battery select internal	JP5	Closed
Battery select 6V external	JP5	Open
í Monitor type select color	SW1/3	Off
Monitor type select monochrome	SW1/3	On
í Floppy drive interface (P2) enabled	SW1/4	Off
Floppy drive interface (P2) disabled	SW1/4	On
í Parallel port select LPT1 (378-37Fh)	SW1/5	Off
Parallel port select LPT2 (278-27Fh)	SW1/5	On
í IDE interface (P3) enabled	SW1/6	Off
IDE interface (P3) disabled	SW1/6	On
í Game port enabled	SW1/7	Off
Game port disabled	SW1/7	On
í NPU synchronous with CPU	SW1/8	Off
NPU asynchronous with CPU	SW1/8	On
í CMOS memory normal operation	P1	Open
CMOS memory clear	P1	Closed
Note: If an EGA or VGA monitor is installed, JP3 can be on either setting.		

DRAM CONFIGURATION		
Size	Bank 0	Bank 1
512KB	(2) 256K x 9	None
1MB	(2) 256K x 9	(2) 256K x 9
2MB	(2) 1M x 9	None
4MB	(2) 1M x 9	(2) 1M x 9

Continued on next page . . .

UNIDENTIFIED

A 3 5 1 3 8 6 S X

... continued from previous page

MONITOR TYPE CONFIGURATION					
MonitorType	SW2/1	SW2/2	SW2/3	SW2/4	SW2/5
CGA	On	On	On	On	On
MDA	Off	On	On	On	On
Pure MDA (no emulation)	On	Off	On	On	On
EGA	Off	Off	On	On	On
Pure EGA (no emulation)	On	On	Off	On	On
VGA Color	Off	On	Off	On	On
VGA Mono	On	Off	Off	On	On
8514	Off	Off	Off	On	On
NEC 2A (640 x 480)	On	On	On	Off	On
NEC/NEC+ (multifrequency)	Off	On	On	Off	On
NEC XL (1024 x 768)	On	Off	On	Off	On
NEC 3D (1024 x 768)	Off	Off	On	Off	On
NEC4D/NEC5D (1024 x 768)	On	On	Off	Off	On
Portrait	Off	On	Off	Off	On

Note: SW2/5 on = interlaced display. For non-interlaced display this setting should be in the Off position.

SERIAL PORT CONFIGURATION			
Serial port 1	Serial port 2	SW1/switch 2	SW1/switch 2
COM1	COM2	Off	Off
COM1	Disabled	Off	Off
Disabled	COM2	On	On
Disabled	Disabled	On	On