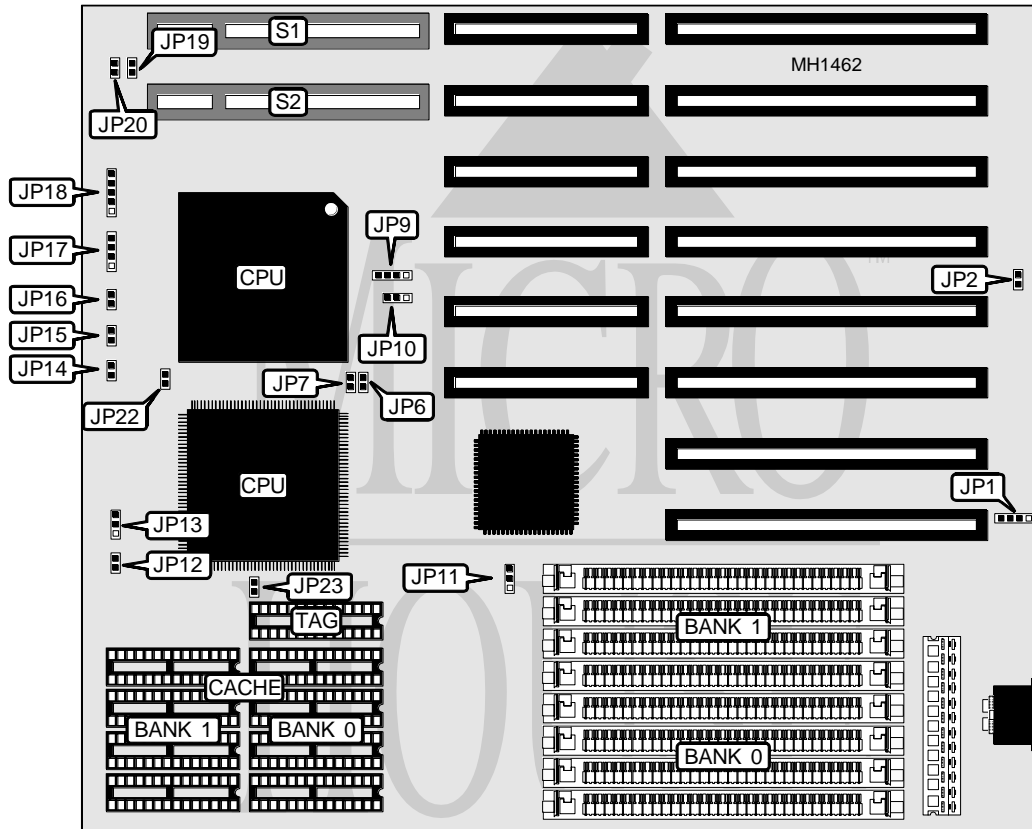


# FREE COMPUTER TECHNOLOGY, INC.

## 80486VESA

<b>Processor</b>	80486SX/80487SX/80486DX/ODP486SX/80486DX2
<b>Processor Speed</b>	20/25/33/40/50(internal)/50/66(internal) MHz
<b>Chip Set</b>	SIS
<b>Max. Onboard DRAM</b>	32MB
<b>SRAM Cache</b>	64/128/256KB
<b>BIOS</b>	AMI
<b>Dimensions</b>	254mm x 218mm
<b>I/O Options</b>	32-bit VESA local bus slot (2)
<b>NPU Options</b>	None



CONNECTIONS			
Purpose	Location	Purpose	Location
External battery	JP1	Speaker	JP17
Reset switch	JP14	Power LED & keylock	JP18
Turbo switch	JP15	32-bit VESA card (2)	S1 & S2
Turbo LED	JP16		

USER CONFIGURABLE SETTINGS		
Function	Jumper	Position
Monitor type select color	JP2	Open
Monitor type select monochrome	JP2	Closed

Continued on next page . . .

# FREE COMPUTER TECHNOLOGY, INC.

## 80486 VESA

... continued from previous page

DRAM CONFIGURATION		
Size	Bank 0	Bank 1
1MB	(4) 256K x 9	NONE
2MB	(4) 256K x 9	(4) 256K x 9
4MB	(4) 1M x 9	NONE
8MB	(4) 1M x 9	(4) 1M x 9
16MB	(4) 4M x 9	NONE
20MB	(4) 1M x 9	(4) 4M x 9
32MB	(4) 4M x 9	(4) 4M x 9

CPU SPEED CONFIGURATION					
Speed	JP6	JP7	JP11	J19	JP20
20MHz	Closed	Closed	pins 1 & 2	Open	Open
25MHz	Open	Closed	pins 1 & 2	Open	Open
33MHz	Closed	Open	pins 1 & 2	Open	Open
40MHz	Closed	Closed	pins 2 & 3	Closed	Closed
50i MHz	Open	Closed	pins 1 & 2	Open	Open
50MHz	Open	Closed	pins 2 & 3	Closed	Closed
66i MHz	Closed	Open	pins 1 & 2	Open	Open

Note: Pins designated should be in the closed position.

CPU TYPE CONFIGURATION				
CPU Type	JP9	JP10	JP22	JP23
80486SX PQFP	pins 1 & 2, 3 & 4	pins 1 & 2	Closed	Open
80486DX PQFP	pins 1 & 2, 3 & 4	pins 1 & 2	Closed	Open
80486SX PGA	pins 2 & 3	Open	Open	Closed
80487SX PGA	pins 1 & 2 and 3 & 4	pins 2 & 3	Open	Closed
80486DX PGA	pins 1 & 2 and 3 & 4	pins 1 & 2	Open	Closed
ODP486SX PGA	pins 1 & 2 and 3 & 4	pins 2 & 3	Open	Closed
80486DX2 PGA	pins 1 & 2 and 3 & 4	pins 1 & 2	Open	Closed

Note: Pins designated should be in the closed position.

SRAM CONFIGURATION					
Size	Cache	Location	TAG	JP12	JP13
64KB	(8) 8K x 8	Banks 0 & 1	(1) 8K x 8	Open	Open
128KB	(4) 32K x 8	Bank 0	(1) 8K x 8	Closed	pins 1 & 2
256KB	(8) 32K x 8	Banks 0 & 1	(1) 32K x 8	Closed	pins 2 & 3

Note: Pins designated should be in the closed position.