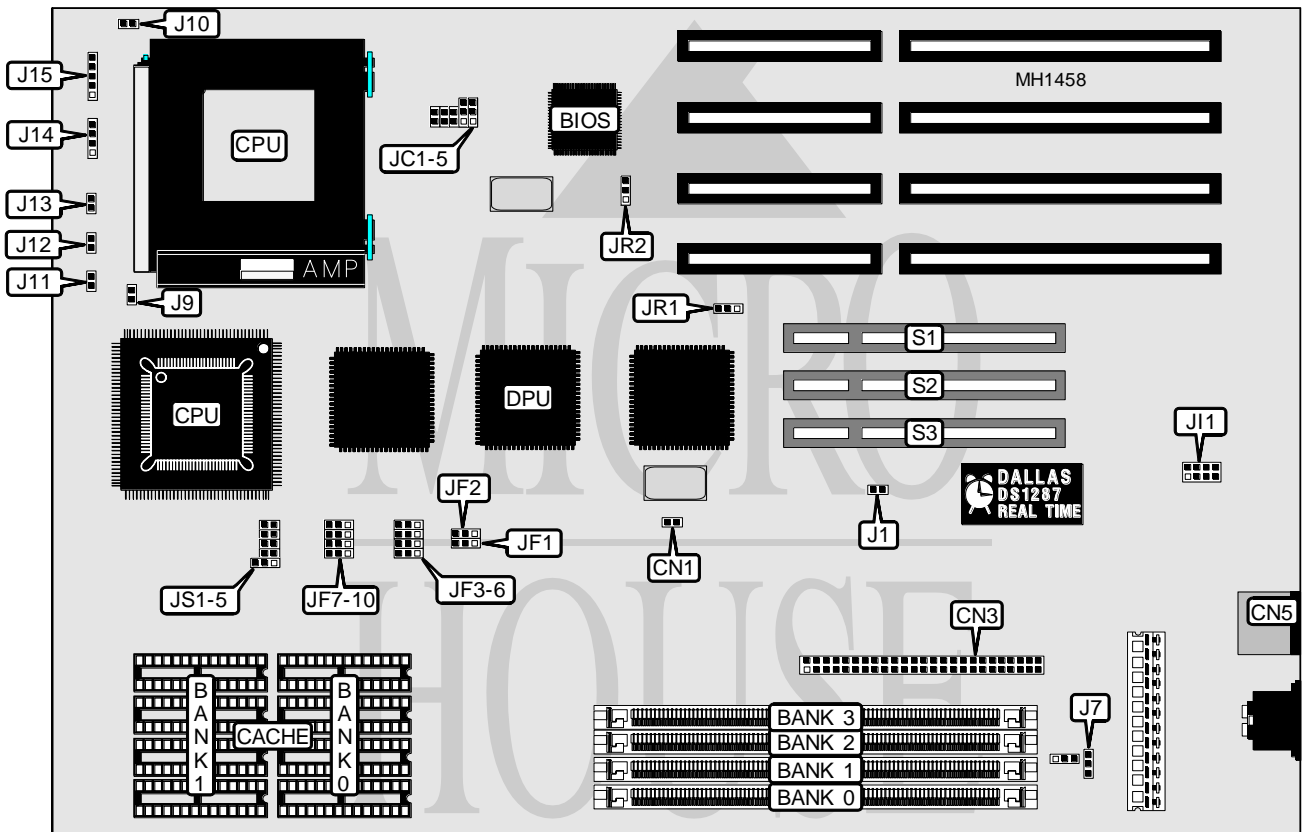


# FIRST INTERNATIONAL COMPUTER, INC.

## 486 P S D

|                          |   |
|--------------------------|---|
| <b>Processor</b>         | 80486SX/80487SX/80486DX/80486DX2                  |
| <b>Processor Speed</b>   | 25/33/50(internal)/50/66(internal)/66MHz          |
| <b>Chip Set</b>          | SIO   |
| <b>Max. Onboard DRAM</b> | 64MB  |
| <b>Cache</b>             | 64/256KB  |
| <b>BIOS</b>              | Award/AMI   |
| <b>Dimensions</b>        | 330mm x 218mm                                     |
| <b>I/O Options</b>       | 32-bit PCI slots, SCSI interface, PS/2 mouse port |
| <b>NPU Options</b>       | None  |



| CONNECTIONS         |          |                   |            |
|---------------------|----------|-------------------|------------|
| Purpose             | Location | Purpose           | Location   |
| Turbo LED           | J11      | IDE interface LED | CN1        |
| Turbo switch        | J12      | SCSI interface    | CN3        |
| Reset switch        | J13      | PS/2 mouse        | CN5        |
| Speaker             | J14      | 32-bit PCI slots  | S1, S2, S3 |
| Power LED & keylock | J15      |                   |            |

Continued on next page . . .

# FIRST INTERNATIONAL COMPUTER, INC.

## 486 PSD

... continued from previous page

| USER CONFIGURABLE SETTINGS          |        |                   |
|-------------------------------------|--------|-------------------|
| Function                            | Jumper | Position          |
| í SCSI power from system            | J1     | Closed            |
| SCSI power from peripheral device   | J1     | Open              |
| í BIOS type select - Award          | J7     | pins 1 & 2 closed |
| BIOS type select -AMI               | J7     | pins 2 & 3 closed |
| í Factory configured - do not alter | J9     | pins 1 & 2 closed |
| í Factory configured - do not alter | J10    | pins 1 & 2 closed |
| í CPU type select - PGA             | JC5    | Closed            |
| CPU type select - PQFP              | JC5    | Open              |
| í Parity error disabled             | JF1    | pins 1 & 2 closed |
| Parity error enabled                | JF1    | pins 2 & 3 closed |
| í CPU generation parity             | JF2    | pins 1 & 2 closed |
| DPU generation parity               | JF2    | pins 2 & 3 closed |
| í Cache wait state disabled         | JF5    | pins 2 & 3 closed |
| Cache wait state enabled            | JF5    | pins 1 & 2 closed |
| í Factory configured - do not alter | JF6    | pins 1 & 2 closed |
| í 7-bit tag address                 | JF7    | pins 2 & 3 closed |
| 8-bit tag address                   | JF7    | pins 1 & 2 closed |
| í L2 cache enabled                  | JF8    | pins 2 & 3 closed |
| L2 cache disabled                   | JF8    | pins 1 & 2 closed |
| í Cache select - 256KB              | JS1    | pins 2 & 3 closed |
| Cache select - 64KB                 | JS1    | pins 1 & 2 closed |

| DRAM CONFIGURATION |                |                |                |                |
|--------------------|----------------|----------------|----------------|----------------|
| Size               | Bank 0         | Bank 1         | Bank 2         | Bank 3         |
| 2MB                | (1) 256KB x 36 | (1) 256KB x 36 | NONE           | NONE           |
| 4MB                | (1) 256KB x 36 | (1) 256KB x 36 | (1) 256KB x 36 | (1) 256KB x 36 |
| 5MB                | (1) 1M x 36    | (1) 256KB x 36 | NONE           | NONE           |
| 4MB                | (1) 1M x 36    | (1) 256KB x 36 | NONE           | NONE           |
| 7MB                | (1) 1M x 36    | (1) 256KB x 36 | (1) 256KB x 36 | (1) 256KB x 36 |
| 8MB                | (1) 1M x 36    | (1) 1M x 36    | NONE           | NONE           |
| 16MB               | (1) 1M x 36    | (1) 1M x 36    | (1) 1M x 36    | (1) 1M x 36    |
| 17MB               | (1) 4M x 36    | (1) 256KB x 36 | NONE           | NONE           |
| 19MB               | (1) 4M x 36    | (1) 256KB x 36 | (1) 256KB x 36 | (1) 256KB x 36 |
| 20MB               | (1) 4M x 36    | (1) 1M x 36    | NONE           | NONE           |
| 22MB               | (1) 4M x 36    | (1) 1M x 36    | (1) 256KB x 36 | (1) 256KB x 36 |
| 28MB               | (1) 4M x 36    | (1) 1M x 36    | (1) 1M x 36    | (1) 1M x 36    |
| 32MB               | (1) 4M x 36    | (1) 4M x 36    | NONE           | NONE           |
| 34MB               | (1) 4M x 36    | (1) 4M x 36    | (1) 256KB x 36 | (1) 256KB x 36 |
| 40MB               | (1) 4M x 36    | (1) 4M x 36    | (1) 1M x 36    | (1) 1M x 36    |
| 64MB               | (1) 4M x 36    | (1) 4M x 36    | (1) 4M x 36    | (1) 4M x 36    |

Continued on next page...

# FIRST INTERNATIONAL COMPUTER, INC.

## 486 PSD

... continued from previous page

| CACHE CONFIGURATION |             |             |
|---------------------|-------------|-------------|
| Size                | Bank 0      | Bank 1      |
| 64KB                | (4) 8K x 8  | (4) 8K x 8  |
| 256KB               | (4) 32K x 8 | (4) 32K x 8 |

Note: The location of the tag chip is unidentified.

| CACHE JUMPER CONFIGURATION |                   |                   |
|----------------------------|-------------------|-------------------|
| Size                       | JF9               | JF10              |
| 64KB                       | pins 1 & 2 closed | pins 1 & 2 closed |
| 256KB                      | pins 2 & 3 closed | pins 2 & 3 closed |

| CACHE SELECT CONFIGURATION |        |        |        |        |
|----------------------------|--------|--------|--------|--------|
| Size                       | JS2    | JS3    | JS4    | JS5    |
| 64KB                       | Open   | Open   | Open   | Open   |
| 256KB                      | Closed | Closed | Closed | Closed |

| CPU PROCESSOR CONFIGURATION |                   |         |
|-----------------------------|-------------------|---------|
| CPU                         | JC1/JC2           | JC3/JC4 |
| SX                          | pins 2 & 3 closed | Open    |
| DX/DX2                      | pins 1 & 2 closed | Closed  |

| CPU TYPE CONFIGURATION |                   |                   |
|------------------------|-------------------|-------------------|
| Speed                  | JF3               | JF4               |
| 25MHz                  | pins 1 & 2 closed | pins 1 & 2 closed |
| 33MHz                  | pins 2 & 3 closed | pins 1 & 2 closed |

| SCSI CONFIGURATION |                   |                   |
|--------------------|-------------------|-------------------|
| Request/IRQ9       | JR1               | JR2               |
| Installed          | pins 1 & 2 closed | pins 1 & 2 closed |
| Not installed      | pins 2 & 3 closed | pins 2 & 3 closed |

| PCI IRQ CONFIGURATION |                   |
|-----------------------|-------------------|
| IRQ setting           | J11               |
| IRQ 5                 | pins 1 & 2 closed |
| IRQ 9                 | pins 3 & 4 closed |
| IRQ 11                | pins 5 & 6 closed |
| IRQ 12                | pins 7 & 8 closed |