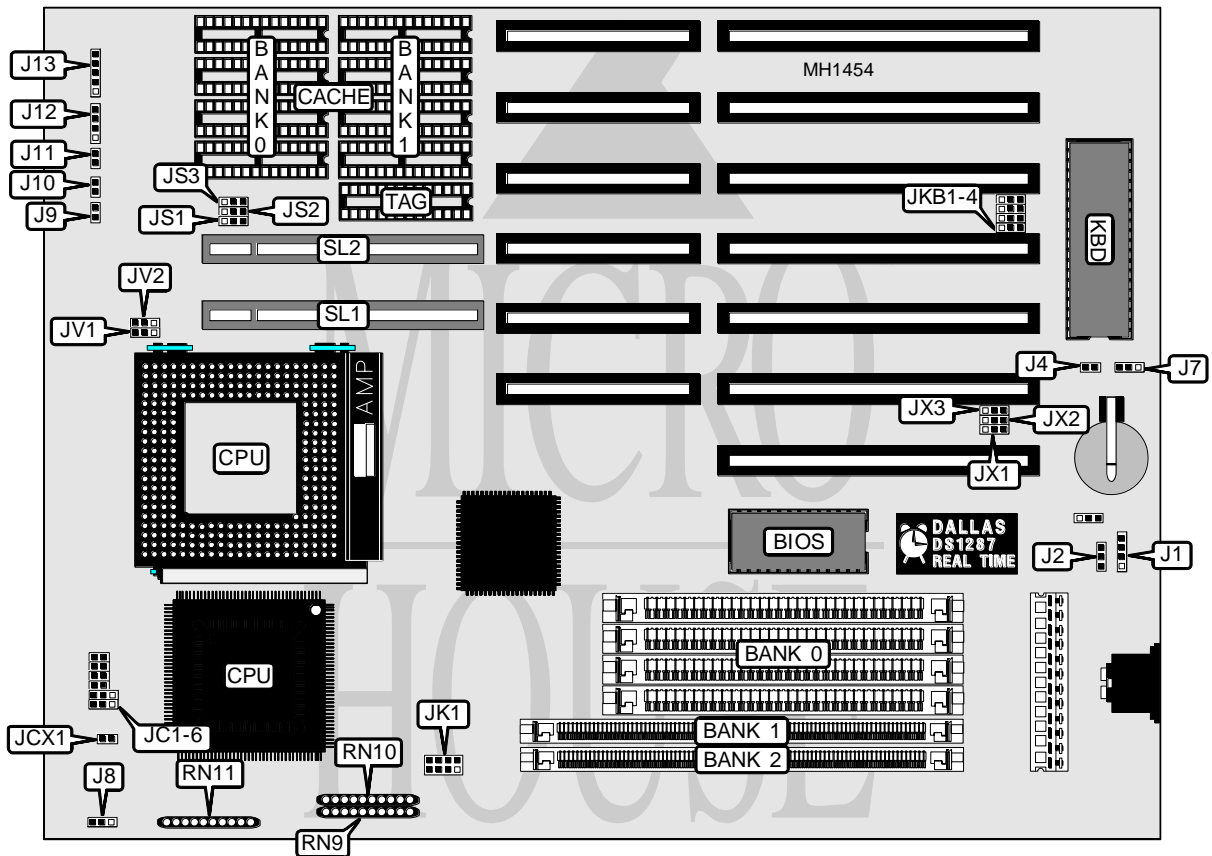


FIRST INTERNATIONAL COMPUTER, INC. 486-GVT (REV. A2)

Processor	CX486S/80486SX/CX486DX/CX487S/80486DX/80486DX2/Pentium Overdrive
Processor Speed	25/33/50(internal)/50/66(internal)/66MHz
Chip Set	VIA
Max. Onboard DRAM	96MB
Cache	64/128/256KB
BIOS	AMI/Award
Dimensions	259mm x 218mm
I/O Options	32-bit VESA local bus slots (2)
NPU Options	None



CONNECTIONS			
Purpose	Location	Purpose	Location
External battery	J1	Speaker	J12
Turbo LED	J9	Power LED & keylock	J13
Turbo switch	J10	32-bit VESA Local bus slot	SL1
Reset switch	J11	32-bit VESA Local bus slot	SL2

Continued on next page . . .

FIRST INTERNATIONAL COMPUTER, INC.
486-GVT (REV. A2)

... continued from previous page

USER CONFIGURABLE SETTINGS		
Function	Jumper	Position
í Battery select - internal	J2	pins 2 & 3 closed
Battery select - external	J2	pins 1 & 2 closed
í Monitor type select monochrome/EGA/VGA	J4	Open
Monitor type select color	J4	Closed
í Password clear - AMI	J7	pins 2 & 3 closed
Password clear - Award	J7	pins 1 & 2 closed
í Factory configured - do not alter	J8	pins 1 & 2 closed
í 80486SX/P23S/P4S/CX486S PQFP disabled	JC6	Open
80486SX/P23S/P4S/CX486S PQFP enabled	JC6	Closed
í CPU 2X clock mode	JX1	pins 2 & 3 closed
CPU 1X clock mode	JX1	pins 1 & 2 closed
í Factory configured - do not alter	JX2	pins 2 & 3 closed
í Keyboard select - external	JKB1-4, JX3	pins 1 & 2 closed
Keyboard select - internal	JKB1-4, JX3	pins 2 & 3 closed
í Intel S-series CPU	JCX1	Open
CX486S	JCX1	Closed

DRAM CONFIGURATION			
Size	Bank 0	Bank 1	Bank 2
1MB	(4) 256K x 9	NONE	NONE
1MB	NONE	(1) 256KB x 36	NONE
1MB	NONE	NONE	(1) 256KB x 36
2MB	(4) 256K x 9	(1) 256KB x 36	NONE
2MB	NONE	(1) 256KB x 36	(1) 256KB x 36
2MB	(4) 256K x 9	NONE	(1) 256KB x 36
3MB	(4) 256K x 9	(1) 256KB x 36	(1) 256KB x 36
4MB	(4) 1M x 9	NONE	NONE
4MB	NONE	(1) 1M x 36	NONE
4MB	NONE	NONE	(1) 1M x 36
5MB	(4) 256K x 9	(1) 1M x 36	NONE
5MB	(4) 256K x 9	NONE	(1) 1M x 36
5MB	(4) 1M x 9	(1) 256KB x 36	NONE
5MB	(4) 1M x 9	NONE	(1) 256KB x 36
5MB	NONE	(1) 256KB x 36	(1) 1M x 36
5MB	NONE	(1) 1M x 36	(1) 256KB x 36
6MB	(4) 256K x 9	(1) 1M x 36	(1) 256KB x 36
6MB	(4) 256K x 9	(1) 256KB x 36	(1) 1M x 36
6MB	(4) 1M x 9	(1) 256KB x 36	(1) 256KB x 36
8MB	(4) 1M x 9	(1) 1M x 36	NONE
8MB	(4) 1M x 9	NONE	(1) 1M x 36
8MB	NONE	(1) 1M x 36	(1) 1M x 36
9MB	(4) 256K x 9	(1) 1M x 36	(1) 1M x 36
9MB	(4) 1M x 9	(1) 256KB x 36	(1) 1M x 36
9MB	(4) 1M x 9	(1) 1M x 36	(1) 256KB x 36

Continued on next page ...

FIRST INTERNATIONAL COMPUTER, INC.

486-GVT (REV. A2)

... continued from previous page

DRAM CONFIGURATION			
12MB	(4) 1M x 9	(1) 1M x 36	(1) 256KB x 36
16MB	(4) 4M x 9	NONE	NONE
16MB	NONE	(1) 4M x 36	NONE
16MB	NONE	NONE	(1) 4M x 36
17MB	(4) 256K x 9	(1) 4M x 36	NONE
17MB	(4) 256K x 9	NONE	(1) 4M x 36
17MB	NONE	(1) 256KB x 36	(1) 4M x 36
17MB	NONE	(1) 4M x 36	(1) 256KB x 36
17MB	(4) 4M x 9	(1) 256KB x 36	NONE
17MB	(4) 4M x 9	NONE	(1) 256KB x 36
18MB	(4) 256K x 9	(1) 256KB x 36	(1) 4M x 36
18MB	(4) 256K x 9	(1) 4M x 36	(1) 256KB x 36
18MB	(4) 4M x 9	(1) 256KB x 36	(1) 256KB x 36
20MB	(4) 1M x 9	(1) 4M x 36	NONE
20MB	(4) 1M x 9	NONE	(1) 4M x 36
20MB	(4) 4M x 9	(1) 1M x 36	NONE
20MB	(4) 4M x 9	NONE	(1) 1M x 36
20MB	NONE	(1) 1M x 36	(1) 4M x 36
20MB	NONE	(1) 4M x 36	(1) 1M x 36
21MB	(4) 256K x 9	(1) 1M x 36	(1) 4M x 36
21MB	(4) 256K x 9	(1) 4M x 36	(1) 1M x 36
21MB	(4) 1M x 9	(1) 256KB x 36	(1) 4M x 36
21MB	(4) 1M x 9	(1) 4M x 36	(1) 256KB x 36
21MB	(4) 4M x 9	(1) 256KB x 36	(1) 1M x 36
21MB	(4) 4M x 9	(1) 1M x 36	(1) 256KB x 36
24MB	(4) 1M x 9	(1) 1M x 36	(1) 4M x 36
24MB	(4) 1M x 9	(1) 4M x 36	(1) 1M x 36
24MB	(4) 4M x 9	(1) 1M x 36	(1) 1M x 36
32MB	(4) 4M x 9	(1) 4M x 36	NONE
32MB	(4) 4M x 9	NONE	(1) 4M x 36
32MB	NONE	(1) 4M x 36	(1) 4M x 36
33MB	(4) 256K x 9	(1) 4M x 36	(1) 4M x 36
33MB	(4) 4M x 9	(1) 256KB x 36	(1) 4M x 36
33MB	(4) 4M x 9	(1) 4M x 36	(1) 256KB x 36
36MB	(4) 1M x 9	(1) 4M x 36	(1) 4M x 36
36MB	(4) 4M x 9	(1) 1M x 36	(1) 4M x 36
36MB	(4) 4M x 9	(1) 4M x 36	(1) 1M x 36
48MB	(4) 4M x 9	(1) 4M x 36	(1) 4M x 36
64MB	(4) 16M x 9	NONE	NONE
65MB	(4) 16M x 9	(1) 256KB x 36	NONE
65MB	(4) 16M x 9	NONE	(1) 256KB x 36
66MB	(4) 16M x 9	(1) 256KB x 36	(1) 256KB x 36
68MB	(4) 16M x 9	(1) 1M x 36	NONE
68MB	(4) 16M x 9	NONE	(1) 1M x 36
69MB	(4) 16M x 9	(1) 256KB x 36	(1) 1M x 36

Continued on next page ...

FIRST INTERNATIONAL COMPUTER, INC.
486-GVT (REV. A2)

... continued from previous page

DRAM CONFIGURATION			
69MB	(4) 16M x 9	(1) 1M x 36	(1) 256KB x 36
72MB	(4) 16M x 9	(1) 1M x 36	(1) 1M x 36
48MB	(4) 4M x 9	(1) 4M x 36	(1) 4M x 36
64MB	(4) 16M x 9	NONE	NONE
65MB	(4) 16M x 9	(1) 256KB x 36	NONE
65MB	(4) 16M x 9	NONE	(1) 256KB x 36
66MB	(4) 16M x 9	(1) 256KB x 36	(1) 256KB x 36
68MB	(4) 16M x 9	(1) 1M x 36	NONE
68MB	(4) 16M x 9	NONE	(1) 1M x 36
69MB	(4) 16M x 9	(1) 256KB x 36	(1) 1M x 36
69MB	(4) 16M x 9	(1) 1M x 36	(1) 256KB x 36
72MB	(4) 16M x 9	(1) 1M x 36	(1) 1M x 36
80MB	(4) 16M x 9	(1) 4M x 36	NONE
80MB	(4) 16M x 9	NONE	(1) 4M x 36
81MB	(4) 16M x 9	(1) 256KB x 36	(1) 256KB x 36
81MB	(4) 16M x 9	(1) 256KB x 36	(1) 4M x 36
81MB	(4) 16M x 9	(1) 4M x 36	(1) 256KB x 36
84MB	(4) 16M x 9	(1) 1M x 36	(1) 4M x 36
84MB	(4) 16M x 9	(1) 4M x 36	(1) 1M x 36
96MB	(4) 16M x 9	(1) 4M x 36	(1) 4M x 36

CACHE CONFIGURATION			
Size	Bank 0	Bank 1	TAG
64KB	(4) 8K x 8	(4) 8K x 8	(1) 8K x 8
128KB	(4) 32K x 8	NONE	(1) 8K x 8
256KB	(4) 32K x 8	(4) 32K x 8	(1) 32K x 8

CACHE JUMPER CONFIGURATION			
Size	JS1	JS2	JS3
64KB	pins 1 & 2 closed	pins 1 & 2 closed	pins 1 & 2 closed
128KB	pins 1 & 2 closed	pins 2 & 3 closed	pins 2 & 3 closed
256KB	pins 2 & 3 closed	pins 2 & 3 closed	pins 1 & 2 closed

CPU TYPE CONFIGURATION			
CPU Type	RN9	RN10	RN11
CX486S/CX486DX (PGA)	Installed	Not installed	Not installed
CX486S(PQFP)	Not installed	Not installed	Installed
CX487S	Installed	Not installed	Not installed
486SX/DX/DX2	Not installed	Not installed	Not installed
486 SL-Enhanced (PGA)	Not installed	Installed	Not installed
486 SL-Enhanced (PQFP)	Not installed	Not installed	Installed

Continued on next page . . .

FIRST INTERNATIONAL COMPUTER, INC.

486 - GVT (REV. A2)

... continued from previous page

CPU TYPE CONFIGURATION					
CPU Type	JC1	JC2	JC3	JC4	JC5
486SX/486 SL Enhanced	2 & 3	2 & 3	Open	Open	Closed
CX486S	2 & 3	2 & 3	Closed	Open	Open
CX487S	1 & 2	1 & 2	Closed	Open	Open
CX486DX	1 & 2	1 & 2	Closed	Open	Open
80486DX/DX2	1 & 2	1 & 2	Closed	Open	Closed
486 SL-Enhanced	1 & 2	1 & 2	Closed	Open	Closed
Pentium Overdrive	1 & 2	1 & 2	Open	Closed	Open

Note: pins designated should be in the closed position.

CPU SPEED SELECT - JK1				
Speed	Pins 1 & 2	Pins 3 & 4	Pins 5 & 6	Pins 7 & 8
25MHz	Open	Open	Closed	Open
33MHz	Closed	Open	Open	Open
40MHz	Closed	Closed	Open	Open
40iMHz	Closed	Open	Closed	Closed
50MHz	Open	Open	Closed	Closed
50iMHz	Open	Closed	Open	Open
66MHz	Open	Closed	Open	Closed
66iMHz	Closed	Open	Open	Closed
80MHz	Closed	Closed	Open	Closed

VESA WAIT STATE/BUS SPEED CONFIGURATION			
CPU speed	Wait states	JV1	JV2
< 33MHz	0 wait states	pins 2 & 3 closed	pins 2 & 3 closed
> 33MHz	1 wait state	pins 1 & 2 closed	pins 1 & 2 closed